

# DOMUS NOVA

Ladbroke Grove

North Kensington W10

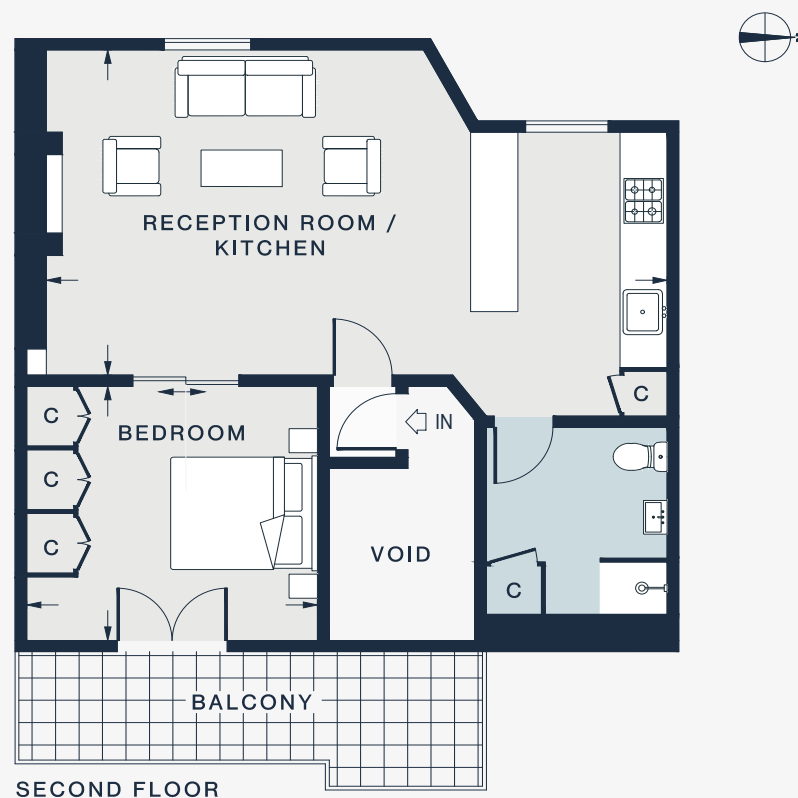
APPROXIMATE GROSS INTERNAL AREA

582 sq ft / 54.1 sq m

020 7727 1717

domusnova.com

LONDON | IBIZA



RECEPTION / KITCHEN  
26'0 x 14'4 (7.9m x 4.4m)

BEDROOM 1  
12'1 x 11'1 (3.7m x 3.4m)

Approx. Gross Internal Area = 582 sq ft / 54.1 sq m

Floor plans are for illustrative purposes only and not to scale. Compliant with RICS code of measuring practice. Furniture layouts are indicative only. This property may be furnished, part-furnished or unfurnished. Please refer to your agent for details.