

DOMUS NOVA

Ladbroke Grove

Notting Hill W11

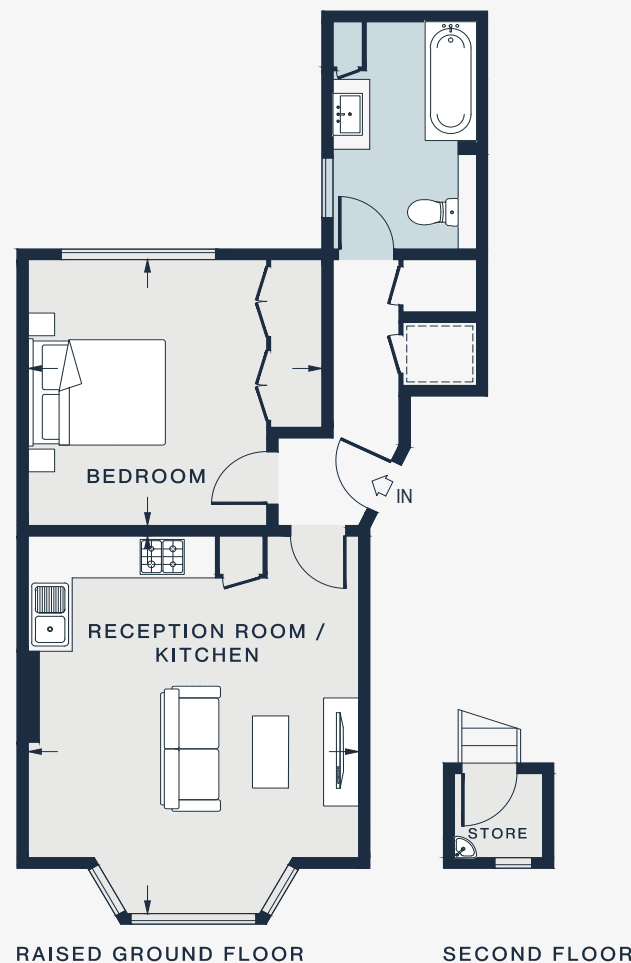
APPROXIMATE GROSS INTERNAL AREA

569 sq ft / 52.89 sq m

020 7727 1717

domusnova.com

LONDON | IBIZA



RECEPTION ROOM / KITCHEN

17'9 x 14'9 (5.4m x 4.5m)

BEDROOM

13'2 x 12'6 (4.0m x 3.8m)

Approx. Gross Internal Area = 569 sq ft / 52.89 sq m

Floor plans are for illustrative purposes only and not to scale. Compliant with RICS code of measuring practice. Furniture layouts are indicative only. This property may be furnished, part-furnished or unfurnished. Please refer to your agent for details.