

DOMUS NOVA

Ladbroke Gardens

Notting Hill W11

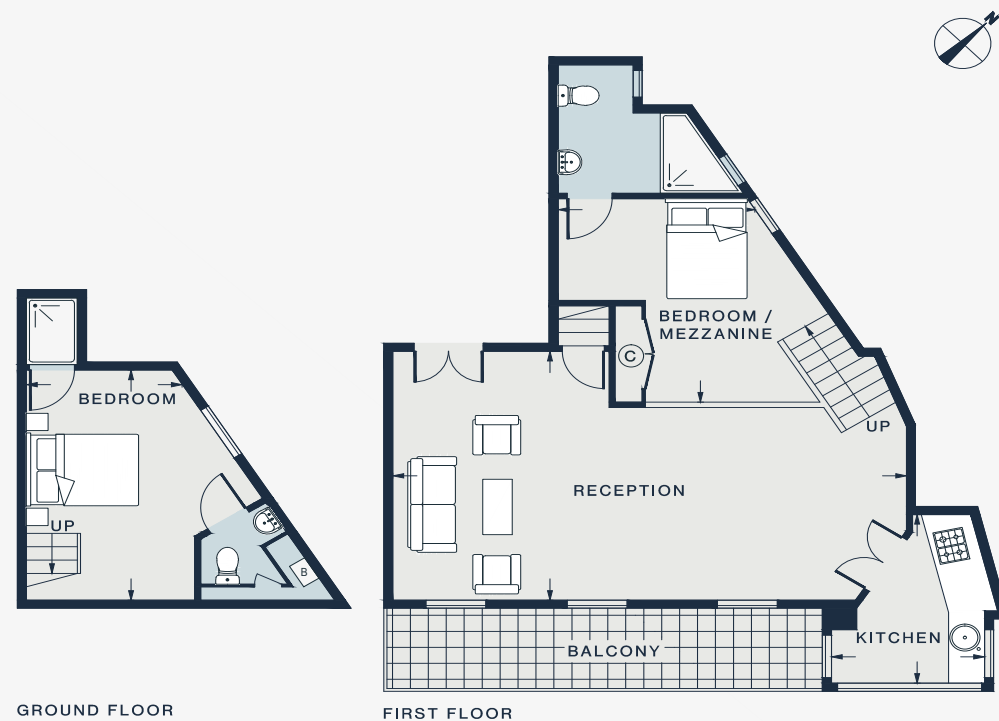
APPROXIMATE GROSS INTERNAL AREA

863 sq ft / 80.1 sq m

020 7727 1717

domusnova.com

LONDON | IBIZA



GROUND FLOOR

FIRST FLOOR

BEDROOM
14'2 x 8'3 (4.3m x 2.5m)

BEDROOM / MEZZANINE
12'7 x 10'5 (3.8m x 3.1m)

RECEPTION ROOM
28'2 x 15'4 (8.5m x 6.5m)

KITCHEN
10'5 x 8'5 (3.1m x 2.5m)

Approx. Gross Internal Area = 863 sq ft / 80.1 sq m

Floor plans are for illustrative purposes only and not to scale. Compliant with RICS code of measuring practice. Furniture layouts are indicative only. This property may be furnished, part-furnished or unfurnished. Please refer to your agent for details.