

DOMUS NOVA

Kilburn Lane

Kensal Rise NW10

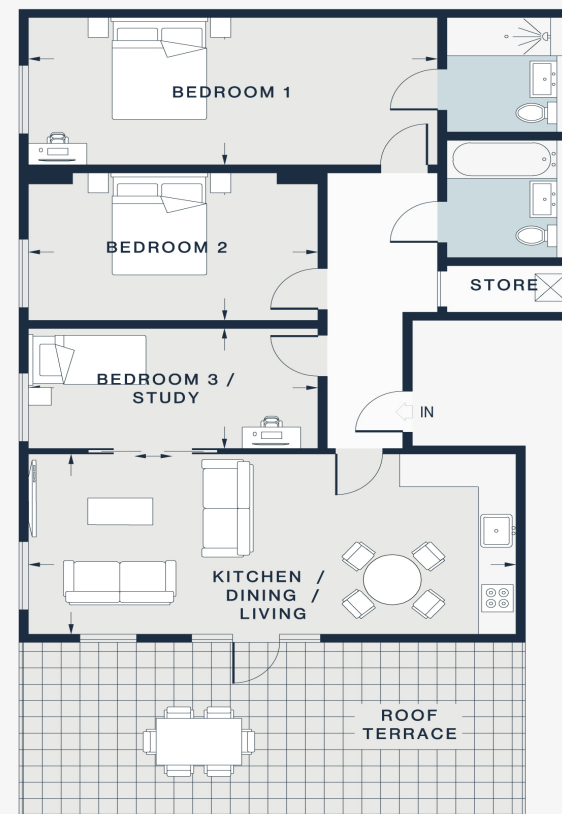
APPROXIMATE GROSS INTERNAL AREA

938 sq ft / 787.2 sq m

020 7727 1717

domusnova.com

LONDON | IBIZA



THIRD FLOOR

KITCHEN / DINING / LIVING

25'5 x 10'10 (7.7m x 3.3m)

BEDROOM 1

21'4 x 8'10 (6.5m x 2.7m)

BEDROOM 2

15'1 x 8'7 (4.6m x 2.7m)

BEDROOM 3 / STUDY

15'1 x 8'4 (4.6m x 2.1m)

TERRACE

26'11 x 10'4 (8.2m x 3.1m)

Floor plans are for illustrative purposes only and not to scale. Compliant with RICS code of measuring practice. Furniture layouts are indicative only. This property may be furnished, part-furnished or unfurnished. Please refer to your agent for details.