

DOMUS NOVA

Kilburn Road

Kensal Rise W10

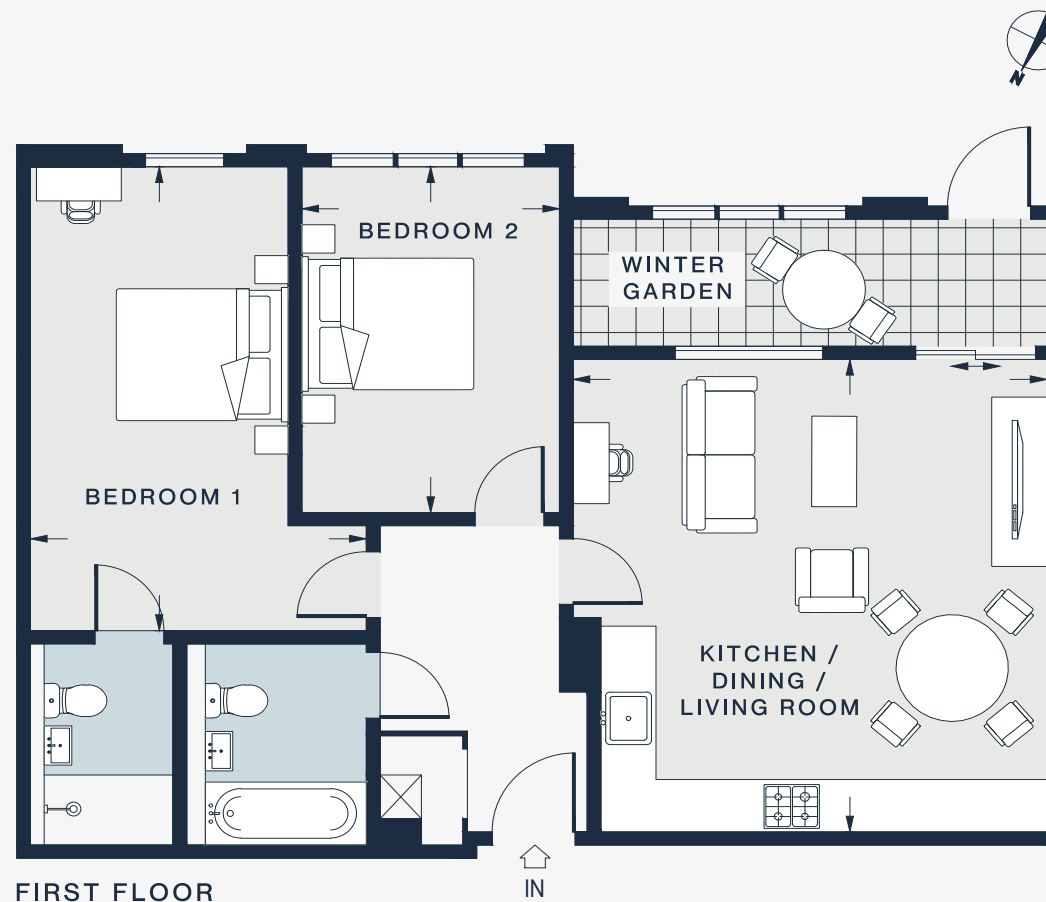
APPROXIMATE GROSS INTERNAL AREA

793 sq ft / 73.7 sq m

020 7727 1717

domusnova.com

LONDON | IBIZA



FIRST FLOOR

KITCHEN / DINING / LIVING ROOM

17'9 x 17'0 (5.4m x 5.2m)

BEDROOM 1

17'5 x 12'0 (5.3m x 3.7m)

WINTER GARDEN

15'11 x 4'9 (4.8m x 1.4m)

BEDROOM 2

13'0 x 9'2 (4.0m x 2.8m)

Approx. Gross Internal Area = 793 sq ft / 73.7 sq m

Floor plans are for illustrative purposes only and not to scale. Compliant with RICS code of measuring practice. Furniture layouts are indicative only. This property may be furnished, part-furnished or unfurnished. Please refer to your agent for details.