

DOMUS NOVA

Kilburn Lane

Kensal Rise NW10

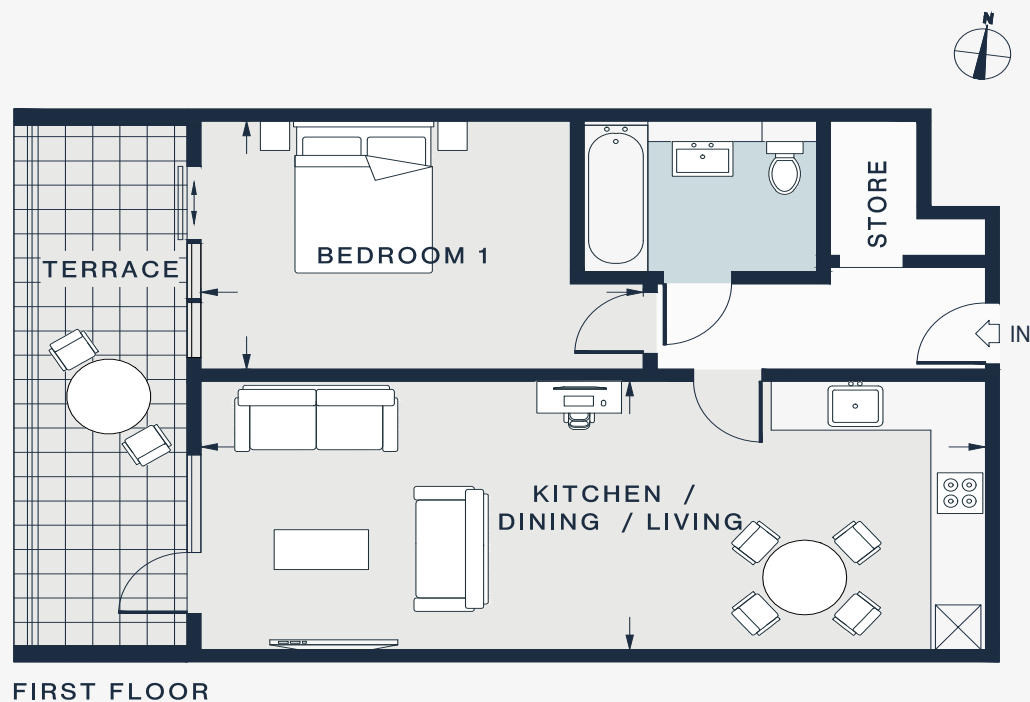
APPROXIMATE GROSS INTERNAL AREA

565 sq ft / 51.7 sq m

020 7727 1717

domusnova.com

LONDON | IBIZA



FIRST FLOOR

KITCHEN / DINING / LIVING
23'3 x 10'10 (8.6m x 3.2m)

BEDROOM 1
16'0 x 10'0 (4.8m x 3.0m)

TERRACE
19'9 x 5'6 (6.3m x 1.6m)

Floor plans are for illustrative purposes only and not to scale. Compliant with RICS code of measuring practice. Furniture layouts are indicative only. This property may be furnished, part-furnished or unfurnished. Please refer to your agent for details.