

DOMUS NOVA



Kensington Gardens Square W2
£1,694 p/w Long Let



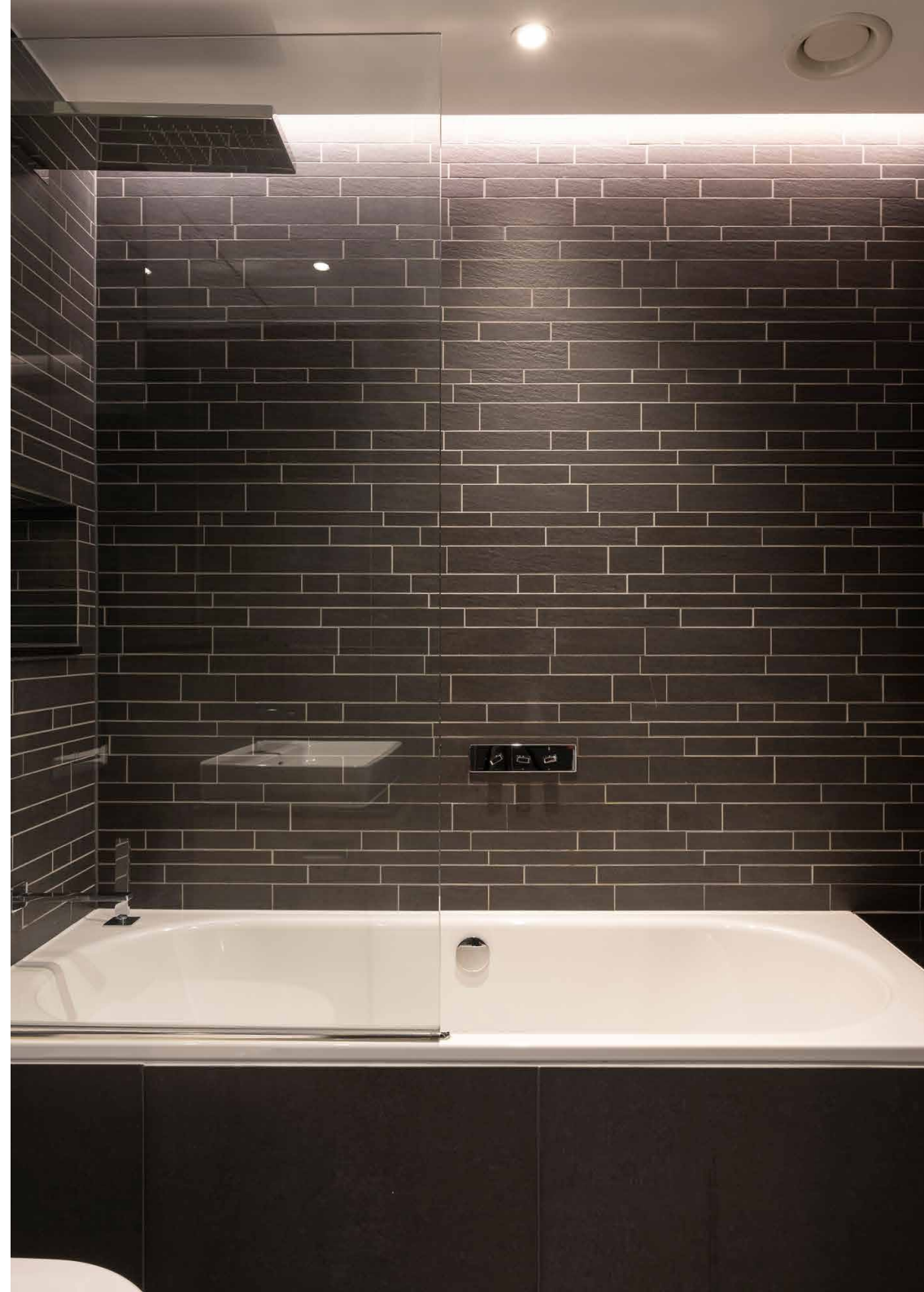
Positioned on the second floor of this contemporary Bayswater apartment block is a stylish two-bedroom flat. Take the lift upstairs and enter an open-plan kitchen, dining and reception room, introduced through Crittall-style doors. A sense of calm is drawn with its whitewashed walls, pale wood floors and reams of natural light that pour through a series of windows. The kitchen is a thoroughly modern affair, complete with Miele appliances and a central island — which doubles as a breakfast bar. The rest of the spacious footprint can be zoned into living and dining areas.







Two bedroom suites are understated in design and soothing in feel, benefitting from the air cooling system which runs throughout the property. The principal room features fitted wardrobes and is served by an en suite bathroom with an inviting tub, while the guest bedroom suite — which could be reimagined as a study or additional dressing room — features a contemporary shower room.







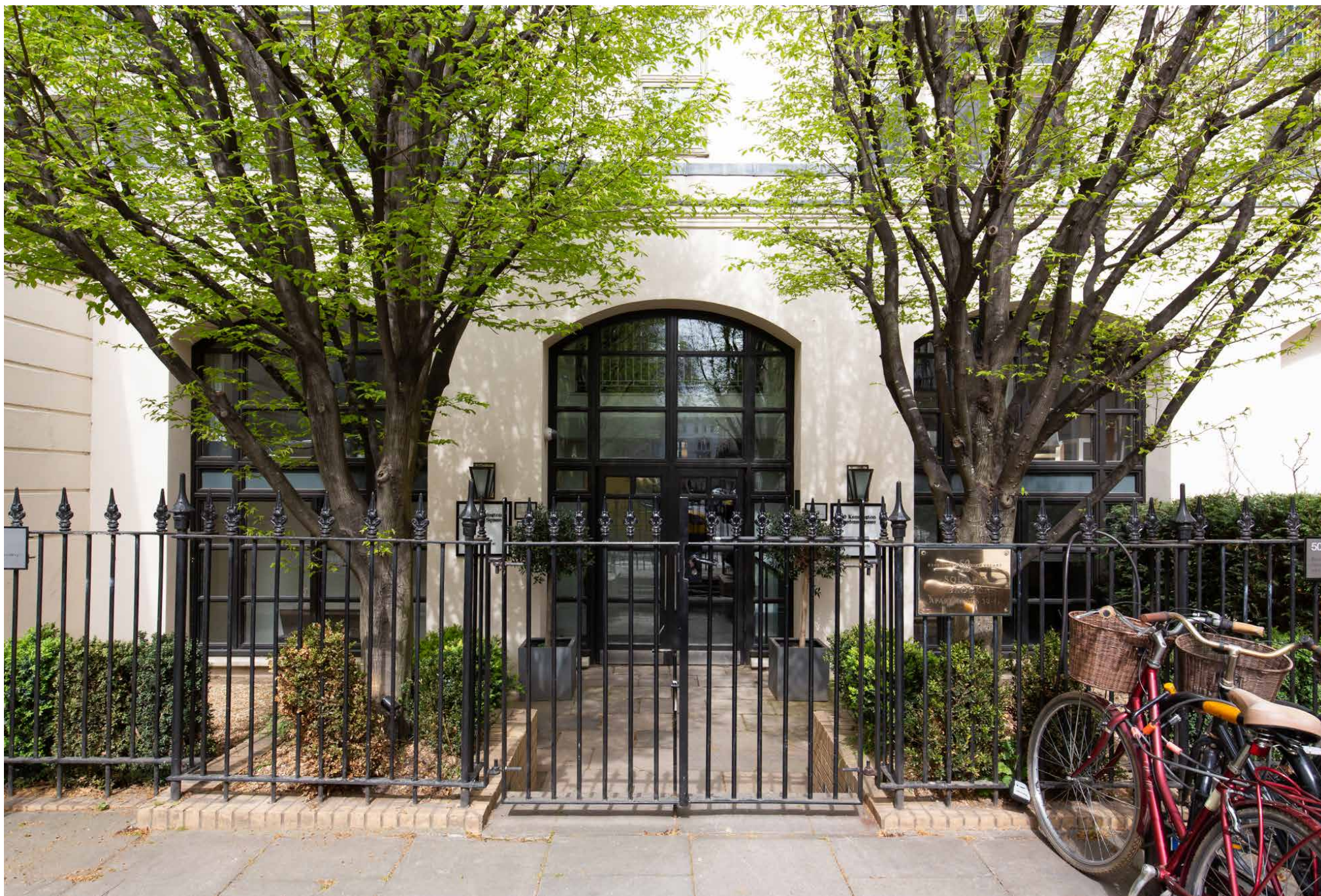


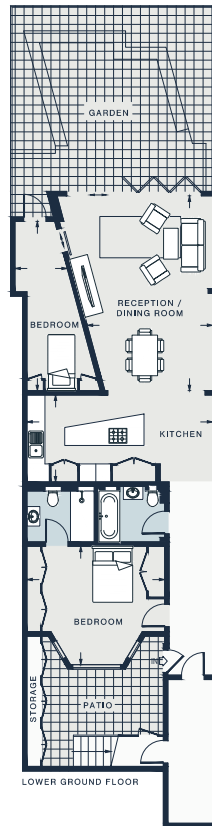
“

A sense of calm is drawn with its
whitewashed walls, pale wood floors and
reams of natural light that pour through
a series of windows.









RECEPTION /
DINING ROOM
21'3 x 14'0 (6.4m x 4.2m)

KITCHEN
20'5 x 9'6 (6.2m x 2.9m)

BEDROOM
18'6 x 5'10 (5.6m x 1.7m)

BEDROOM
15'2 x 13'0 (4.6m x 3.9m)

Approx. Gross Internal Area = 1216 sq ft / 113 sq m (Including Storage)

Floor plans are for illustrative purposes only and not to scale. Compliant with RICS code of measuring practice.

Property Details

Recently-refurbished apartment
Open-plan kitchen, dining and reception room
Principal bedroom suite
Guest bedroom suite
One additional WC
Air cooling system
24/7 porter
Two lifts
Underground parking
Furniture package available at additional cost
7 minute walk to Hyde Park
City of Westminster

Approx. 1412 sq ft / 132 sq m
EPC = B
Council Tax Band = G
Deposit = £10,164



Location

Kensington Gardens Square is a quiet enclave that's just moments from the action of Bayswater and Notting Hill. Start your day at Guillam Coffee House before browsing the boutiques along Westbourne Grove. Workouts are best at Psycle, 1Rebel or Barrecore, followed by lunch at Sunday in Brooklyn or Sumi. Venture into Hyde Park for longer strolls or swims in the Serpentine Lido. Head to The Cow, a coveted watering hole, for evening drinks and oysters.

Bayswater - 4 mins (Circle, District)

Queensway - 8 mins (Central)

Specialising in London
and Ibiza's design-led homes

Let's talk
020 7727 1717
lettings@domusnova.com
domusnova.com

The property particulars are a guide not statements. Descriptions, photographs, and plans are for guidance and should be checked by the prospective tenant. The Property is offered "subject to contract and references". No warranties, representations, or Tenancy is given by Domus Nova. Expenses incurred by a prospective tenant will not be reimbursed if the Landlord withdraws prior to the Tenancy Agreement being signed, dated and exchanged and cleared funds received. Furniture and other items shown in a property at viewing may belong to a current tenant. The prospective tenant should verify in writing which fixtures and fittings forms part of the Tenancy. Our full lettings disclaimer together with trading names and our [Privacy Policy](#) is shown on our website