

# DOMUS NOVA

Kensington Park Road

Notting Hill W11

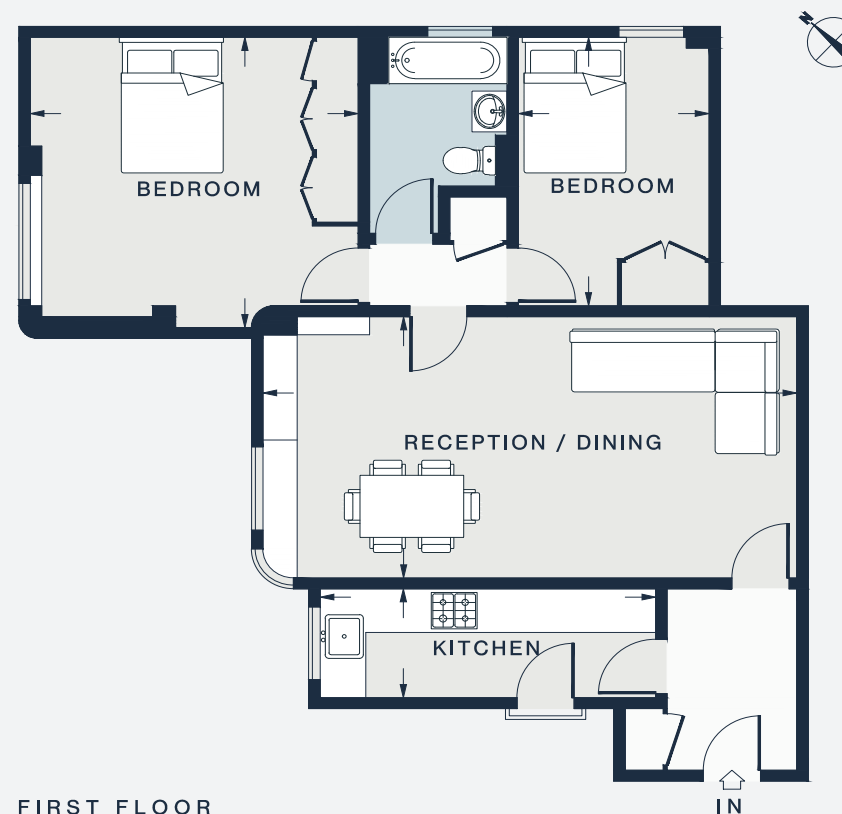
APPROXIMATE GROSS INTERNAL AREA

803 sq ft / 74.6 sq m

020 7727 1717

domusnova.com

LONDON | IBIZA



FIRST FLOOR

RECEPTION/DINING  
23'1 x 12'1 (7.0m x 3.6m)

BEDROOM  
12'2 x 8'4 (3.7m x 2.5m)

KITCHEN  
14'8 x 5'1 (4.4m x 1.5m)

BEDROOM  
14'3 x 13'3 (4.3m x 4.0m)

Approx. Gross Internal Area = 803 sq ft / 74.6 sq m

Floor plans are for illustrative purposes only and not to scale. Compliant with RICS code of measuring practice. Furniture layouts are indicative only. This property may be furnished, part-furnished or unfurnished. Please refer to your agent for details.