

# DOMUS NOVA

Kensington Gardens Square

Bayswater W2

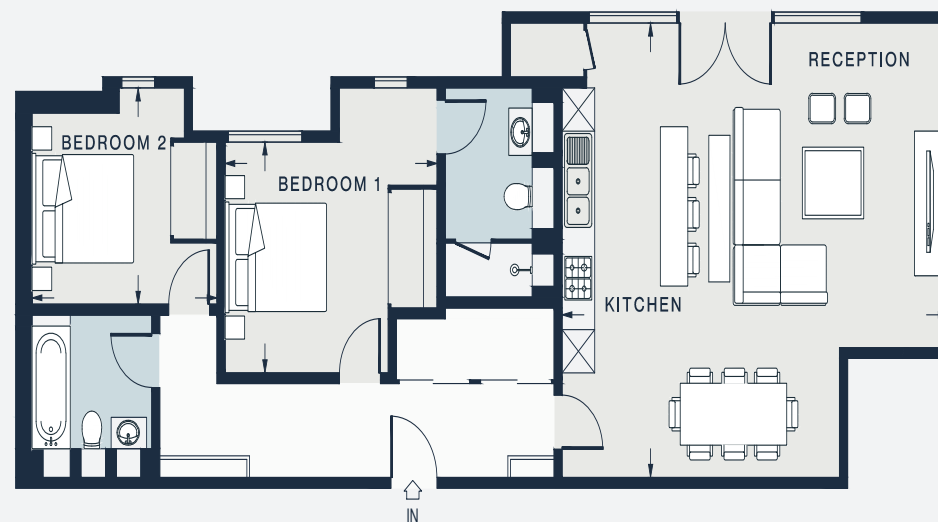
APPROXIMATE GROSS INTERNAL AREA

**990 sq ft / 92 sq m**

020 7727 1717

domusnova.com

LONDON | IBIZA



RECEPTION/ KITCHEN

23'4 x 20'8 (7.1m x 6.3m)

BEDROOM 1

12'10 x 10'6 (3.9m x 3.2m)

BEDROOM 2

11'2 x 9'10 (3.4m x 3.0m)

Approx. Gross Internal Area = 990 sq ft / 92 sq m

Floor plans are for illustrative purposes only and not to scale. Compliant with RICS code of measuring practice. Furniture layouts are indicative only. This property may be furnished, part-furnished or unfurnished. Please refer to your agent for details.