

DOMUS NOVA

Kensington Park Mews

Notting Hill W11

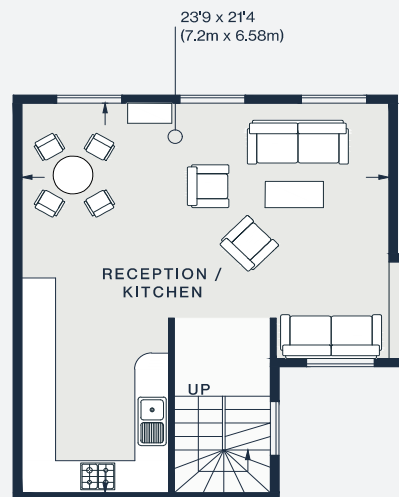
APPROXIMATE GROSS INTERNAL AREA

1,847 sq ft / 171 sq m

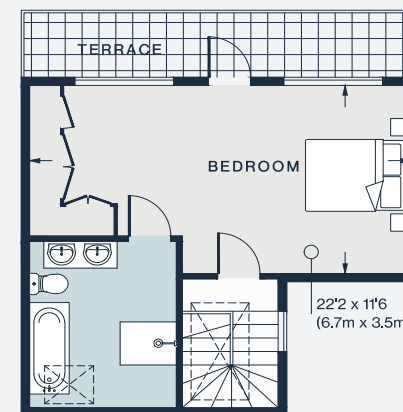
020 7727 1717

domusnova.com

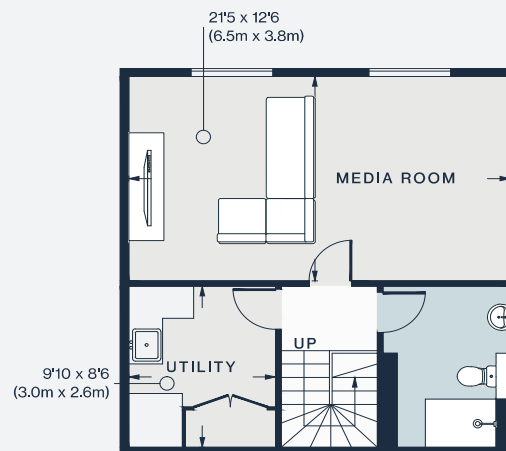
LONDON | IBIZA



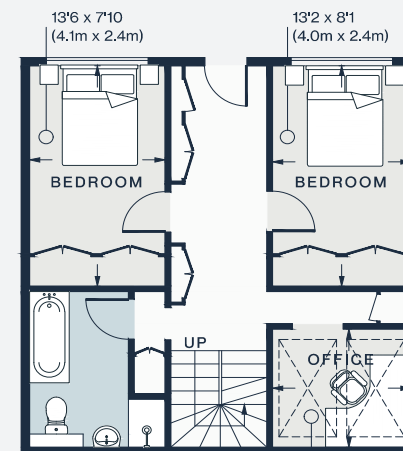
FIRST FLOOR



SECOND FLOOR



LOWER GROUND FLOOR



GROUND FLOOR

Approx. Gross Internal Area = 1,847 sq ft / 172 sq m

Floor plans are for illustrative purposes only and not to scale. Compliant with RICS code of measuring practice. Furniture layouts are indicative only. This property may be furnished, part-furnished or unfurnished. Please refer to your agent for details.