

DOMUS NOVA

Kensington Gardens Square

Bayswater W2

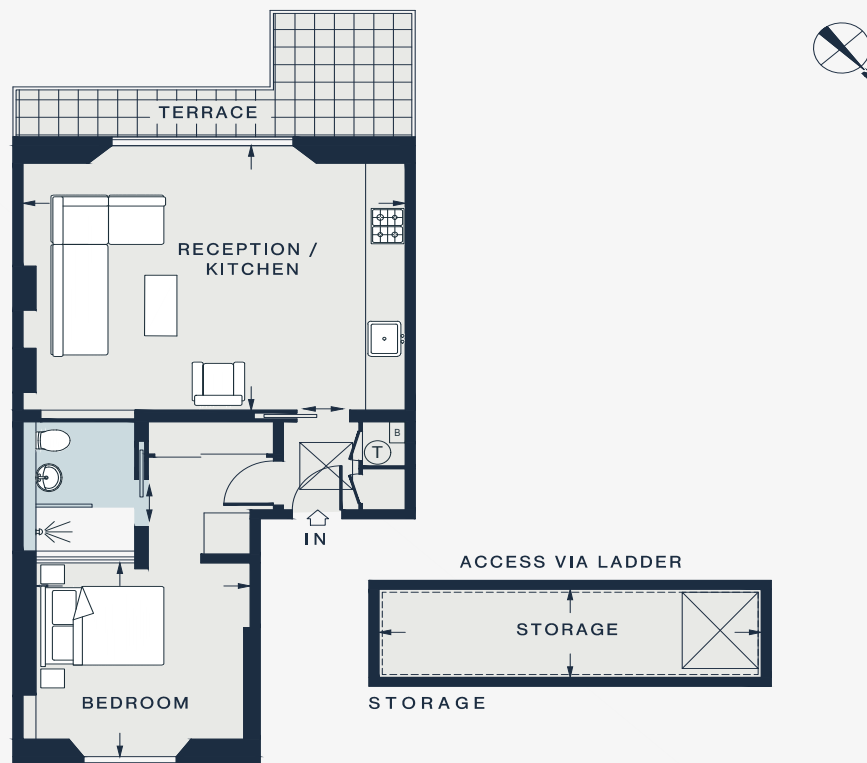
APPROXIMATE GROSS INTERNAL AREA

527 sq ft / 49 sq m

020 7727 1717

domusnova.com

LONDON | IBIZA



FIRST FLOOR

RECEPTION / KITCHEN

19'0 x 14'8 (5.78m x 4.48m)

BEDROOM

10'9 x 10'5 (3.28m x 3.18m)

STORAGE

19'1 x 4'11 (5.82m x 1.49m)

Floor plans are for illustrative purposes only and not to scale. Compliant with RICS code of measuring practice. Furniture layouts are indicative only. This property may be furnished, part-furnished or unfurnished. Please refer to your agent for details.