

DOMUS NOVA



Kensington Gardens Square W2

£1,535 p/w - Long Let



In a sleek development, this design-forward two-bedroom apartment is a serene sanctum for modern city living. Enter through Crittall doors into this spacious and uplifting home in Bayswater. You are instantly drawn to the open-plan kitchen and reception, featuring blonde hardwood floors, whitewashed walls and a minimalistic aesthetic. The monochromatic kitchen is contrasted by accent cabinets which provide texture and a reference to the fitted cabinetry in the living area.

The pared-back palette allows the considered design of this generous room to take centre stage. Light floods the plan through glass doors which lead onto a sprawling terrace. A space ideal for relaxing or entertaining. The principal bedroom features fitted wardrobes and a sleek en suite bathroom with modern fittings. A comfortable guest bedroom features built-in storage and easy access to the stylish, fully-tiled family bathroom. Both bedrooms feature plush carpets and double doors leading to the terrace.

Photos are indicative and do not represent the specific apartment listed. Please refer to your agent for further details.

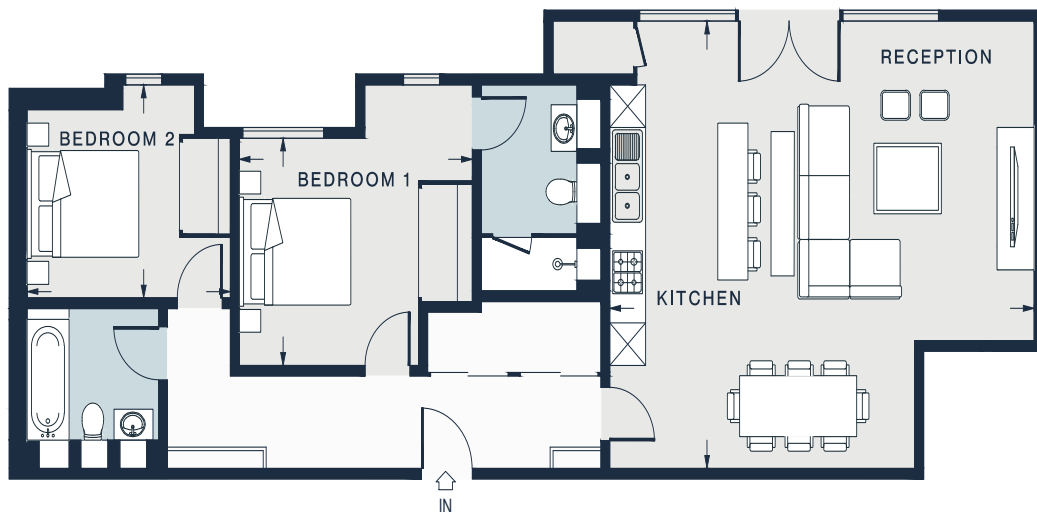












RECEPTION/ KITCHEN
23'4 x 20'8 (7.1m x 6.3m)

BEDROOM 1
12'10 x 10'6 (3.9m x 3.2m)

BEDROOM 2
11'2 x 9'10 (3.4m x 3.0m)

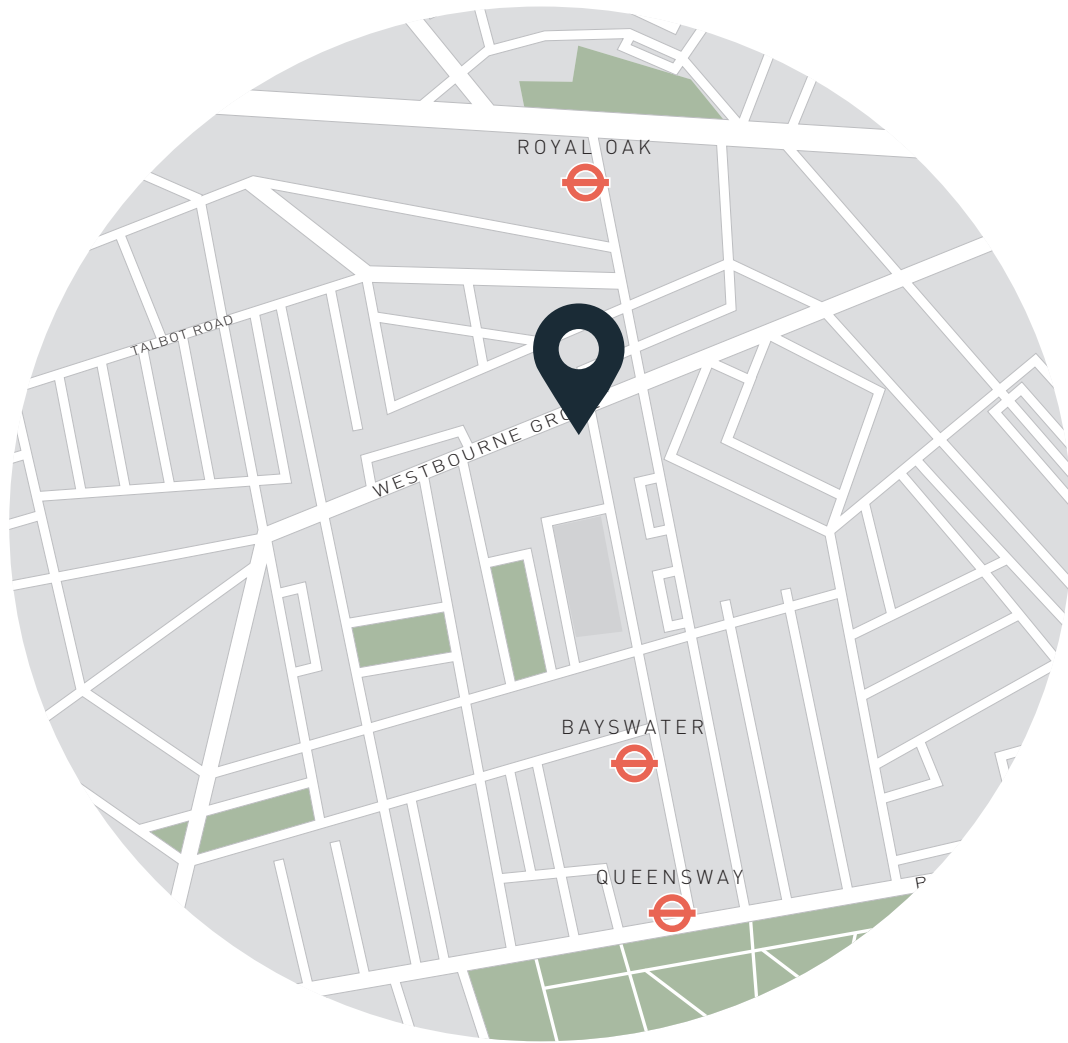
Approx. Gross Internal Area = 990 sq ft / 92 sq m

Floor plans are for illustrative purposes only and not to scale. Compliant with RICS code of measuring practice.
Furniture layouts are indicative only. This property may be furnished, part-furnished or unfurnished. Please refer to your agent for details.

Property Details

- Open-plan kitchen and living room
- Principal bedroom suite
- One further bedroom
- Family bathroom
- Terrace
- Two lifts
- 6th floor
- 24/7 porter
- Underground parking
- Furniture package available at additional cost
- Royal Borough of Kensington & Chelsea

- Approx 1,130 sq ft / 105 sq m
- EPC = B
- Council Tax Band = G
- Deposit payable = £7,675



Location

Kensington Gardens Square is a quiet enclave in the heart of Bayswater. Bustling Westbourne Grove is moments away. Head to Sunday in Brooklyn for brunch followed by retail therapy at Sézane or Reformation. Browse the antiques and boutiques of Portobello Market or plot your way across the manicured lawns of Hyde Park. And with several tube stations nearby, the city is never far away.

Nearest tube:

Queensway - (4 mins)

Bayswater - (5 mins)

DOMUS NOVA

Specialising in London
and Ibiza's design-led homes.

Let's talk
020 7727 1717
lettings@domusnova.com
domusnova.com