

# DOMUS NOVA

Kensington Gardens Square

Bayswater W2

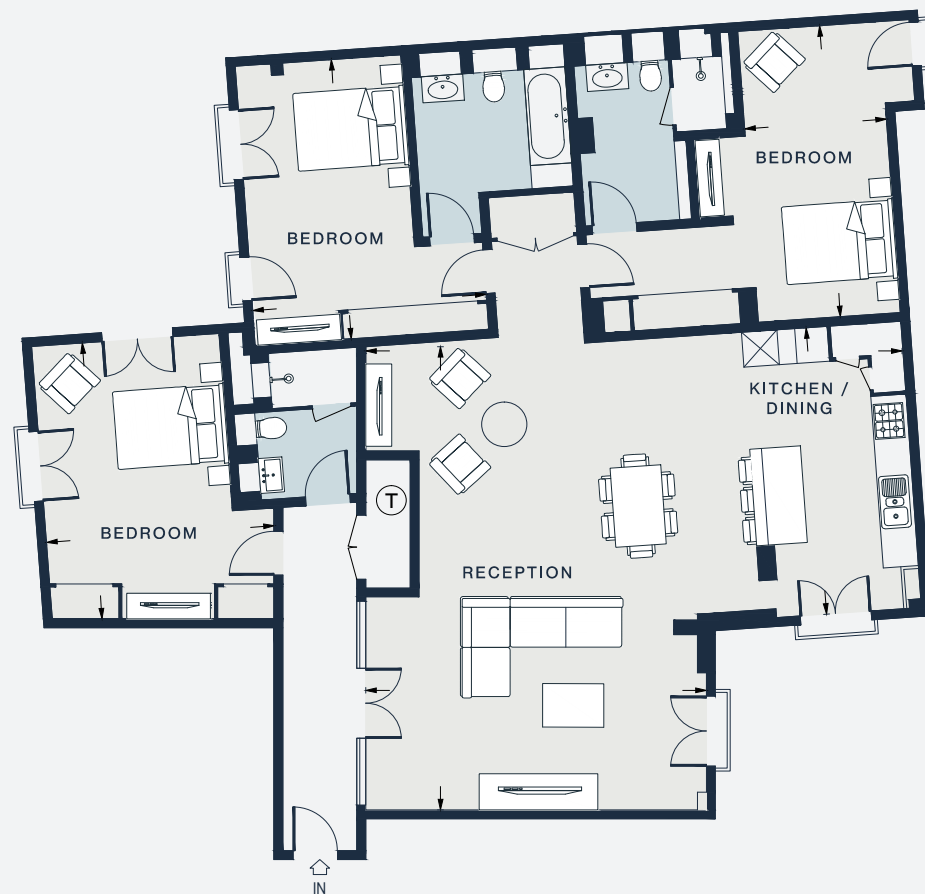
APPROXIMATE GROSS INTERNAL AREA

1,647 sq ft / 153 sq m

020 7727 1717

domusnova.com

LONDON | IBIZA



RECEPTION  
26'7 x 19'0 (8.1m x 5.8m)

BEDROOM  
16'5 x 7'10 (5.0m x 2.4m)

BEDROOM  
15'9 x 12'6 (4.8m x 3.8m)

KITCHEN / DINING  
26'11 x 15'5 (8.2m x 4.7m)

BEDROOM  
15'9 x 14'1 (4.8m x 4.3m)

Approx. Gross Internal Area = 1,647 sq ft / 153.0 sq m

Floor plans are for illustrative purposes only and not to scale. Compliant with RICS code of measuring practice. Furniture layouts are indicative only. This property may be furnished, part-furnished or unfurnished. Please refer to your agent for details.