

# DOMUS NOVA

Kensington Gardens Square

Bayswater W2

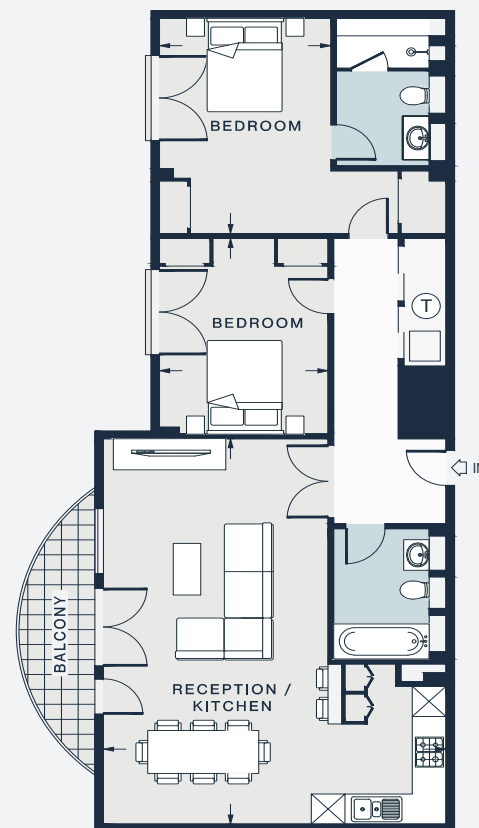
APPROXIMATE GROSS INTERNAL AREA

990 sq ft / 92 sq m

020 7727 1717

domusnova.com

LONDON | IBIZA



RECEPTION/ KITCHEN  
25'3 x 20'0 (7.7m x 6.1m)

BEDROOM  
12'10 x 9'10 (3.9m x 3.0m)

BEDROOM  
16'9 x 14'1 (5.1m x 4.3m)

Approx. Gross Internal Area = 990 sq ft / 92 sq m

Floor plans are for illustrative purposes only and not to scale. Compliant with RICS code of measuring practice. Furniture layouts are indicative only. This property may be furnished, part-furnished or unfurnished. Please refer to your agent for details.