

# DOMUS NOVA



Kensington Gardens Square, Notting Hill W2  
£1,885 p/w Long Let



Housed in a stylish new-build development just minutes away from Hyde Park, this two-bedroom lateral apartment is a calming setting with contemporary interior design and reams of natural light.

Positioned in the heart of Bayswater, this two-bedroom lateral apartment is a sophisticated canvas for city living. Take the lift upstairs and a spacious kitchen, dining and reception room makes a welcoming first impression. There's a tranquil atmosphere drawn with whitewashed walls and pale timber floors, with sunlight filtered through a series of dark-framed windows and French doors.

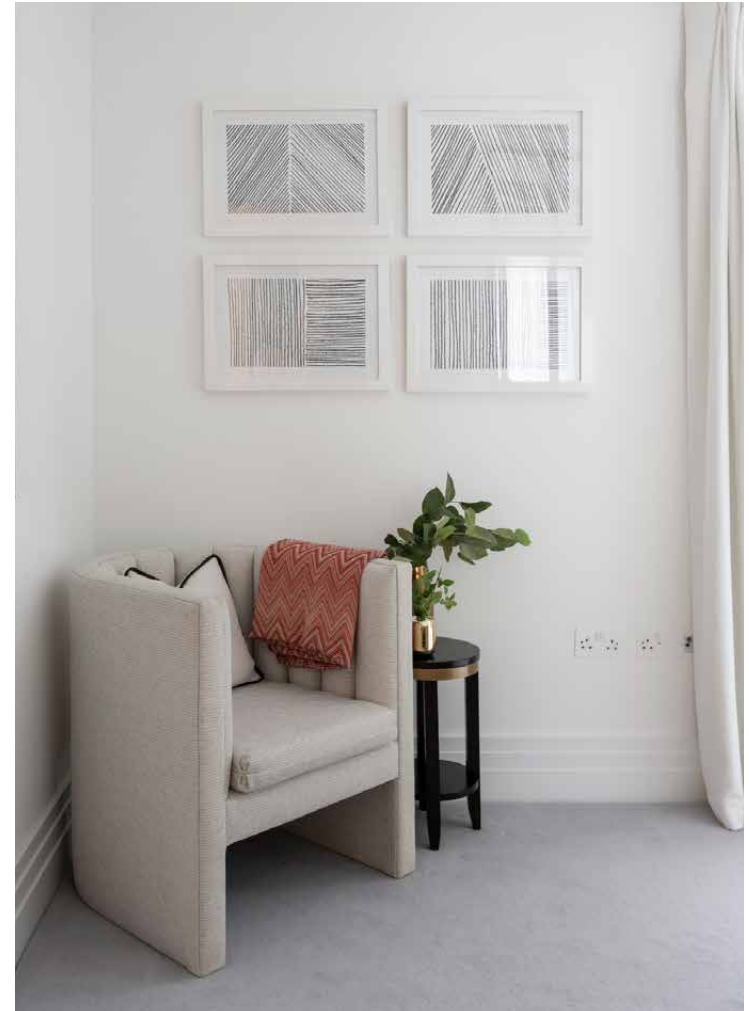
The kitchen is sleek and streamlined, with glossy worktops and wooden cabinetry, plus hi-tech Miele appliances and silver pendant lights. A central island doubles as a breakfast bar, while a banquette sofa is neatly integrated beneath mirrored walls. The living and dining area is a thoroughly modern affair, with cool tones in abundance across the muted blue tuxedo sofa, greyscale dining chairs, glass tables and mirrored display units that frame a large television. Full-height curtains can be drawn to keep things cosy, while a private terrace lies beyond the glazed French doors.













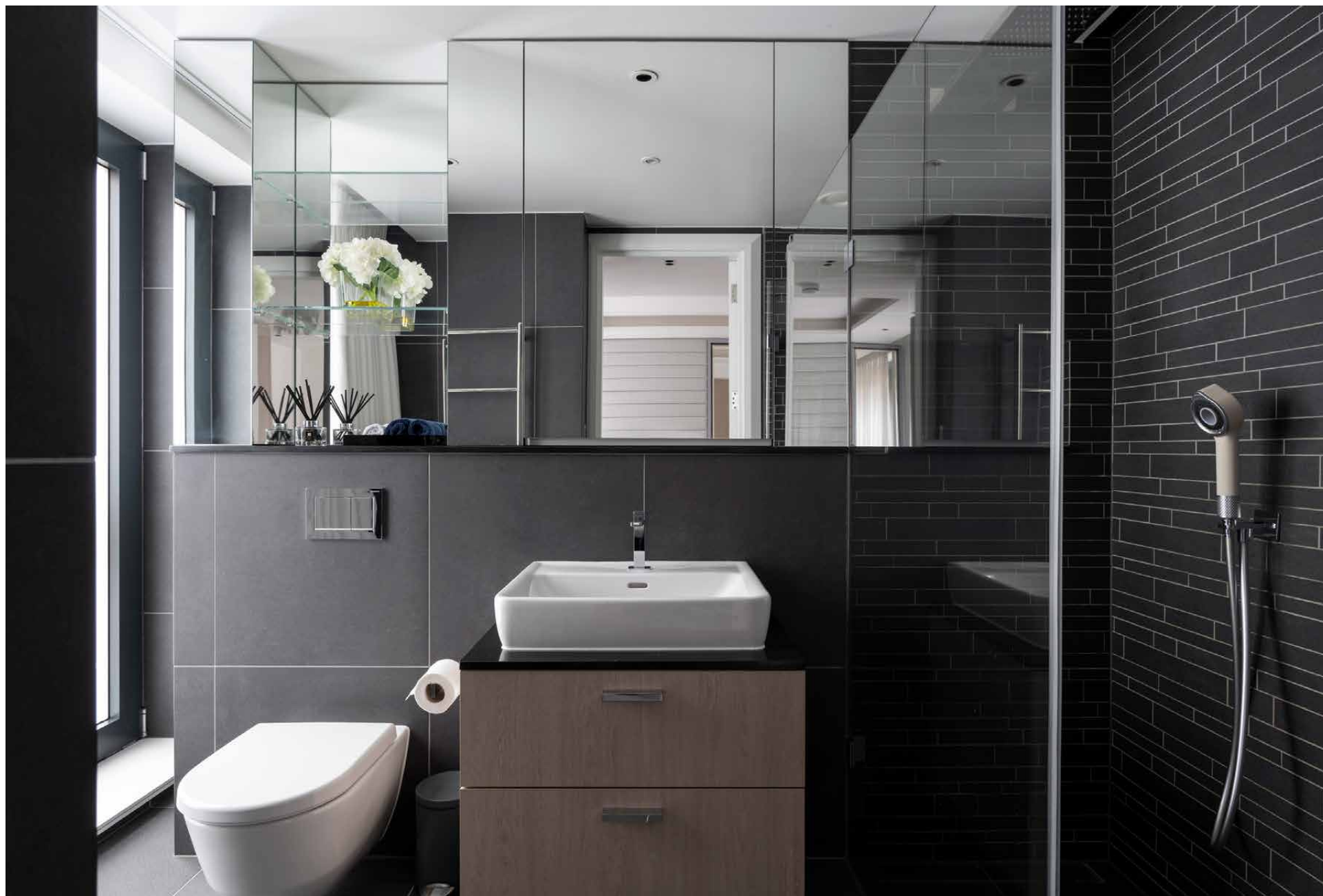
Two bedroom suites are pared-back in design and calming in atmosphere, benefitting from the air cooling system which runs throughout the property. In the principal bedroom, soft carpets run underfoot and integrated wardrobes provide plenty of storage.

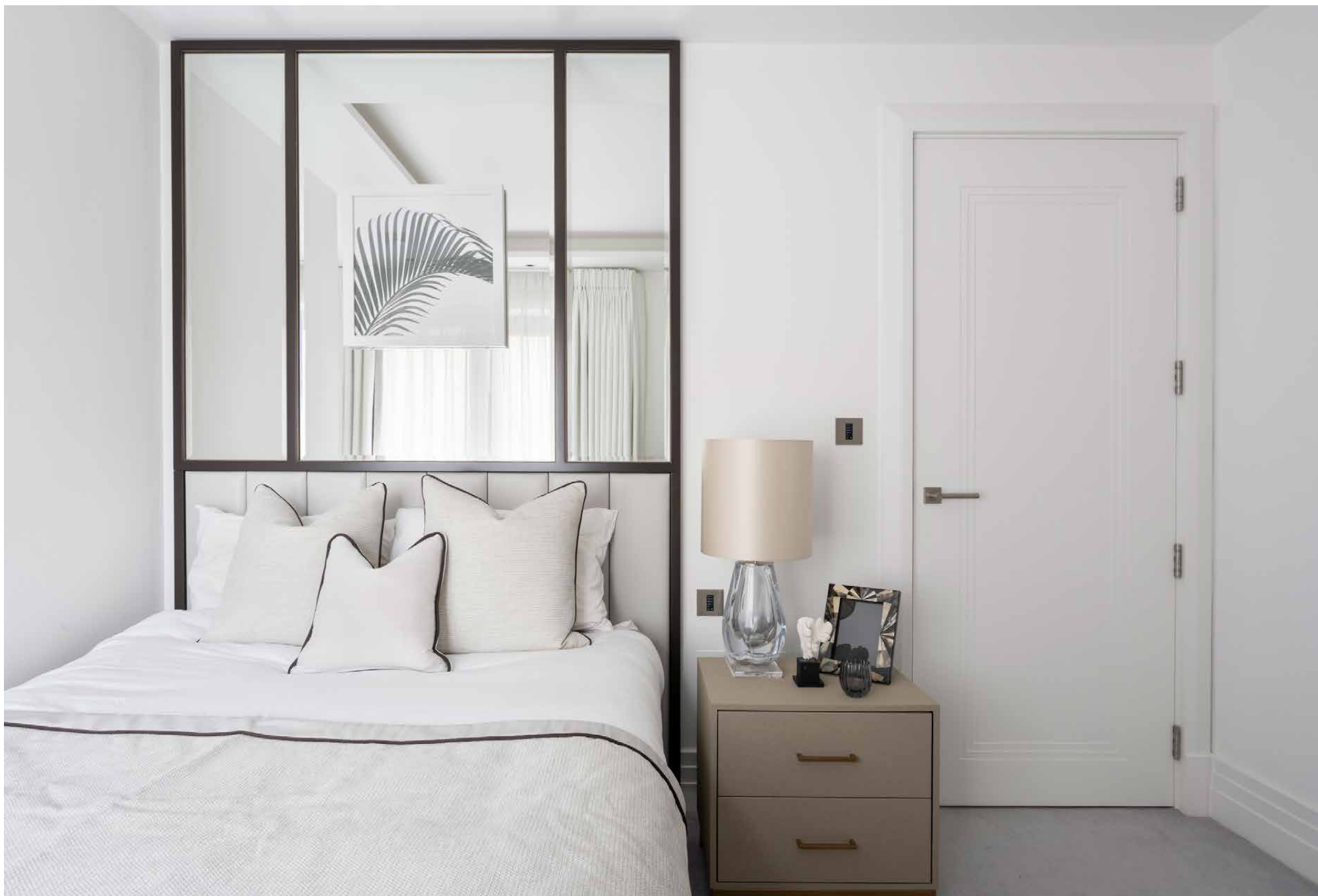
It's served by a stylish en suite bathroom, crafted with modish stone tiles and a walk-in rainfall shower. The guest bedroom suite is equally as soothing, and enjoys an inviting bathtub in its bathroom.

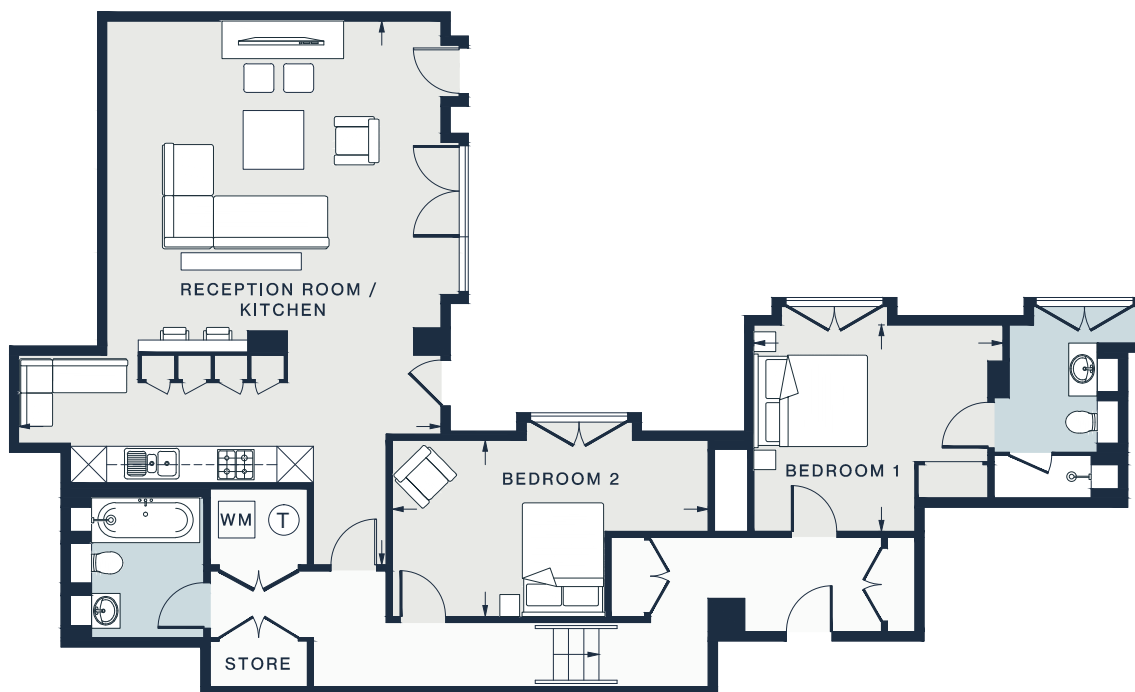












RECEPTION ROOM / KITCHEN

24'11 x 22'8 (7.6m x 6.9m)

BEDROOM 2

17'1 x 9'6 (5.2m x 2.9m)

BEDROOM 1

12'10 x 11'2 (3.9m x 3.4m)

Approx. Gross Internal Area = 1184 sq ft / 110 sq m

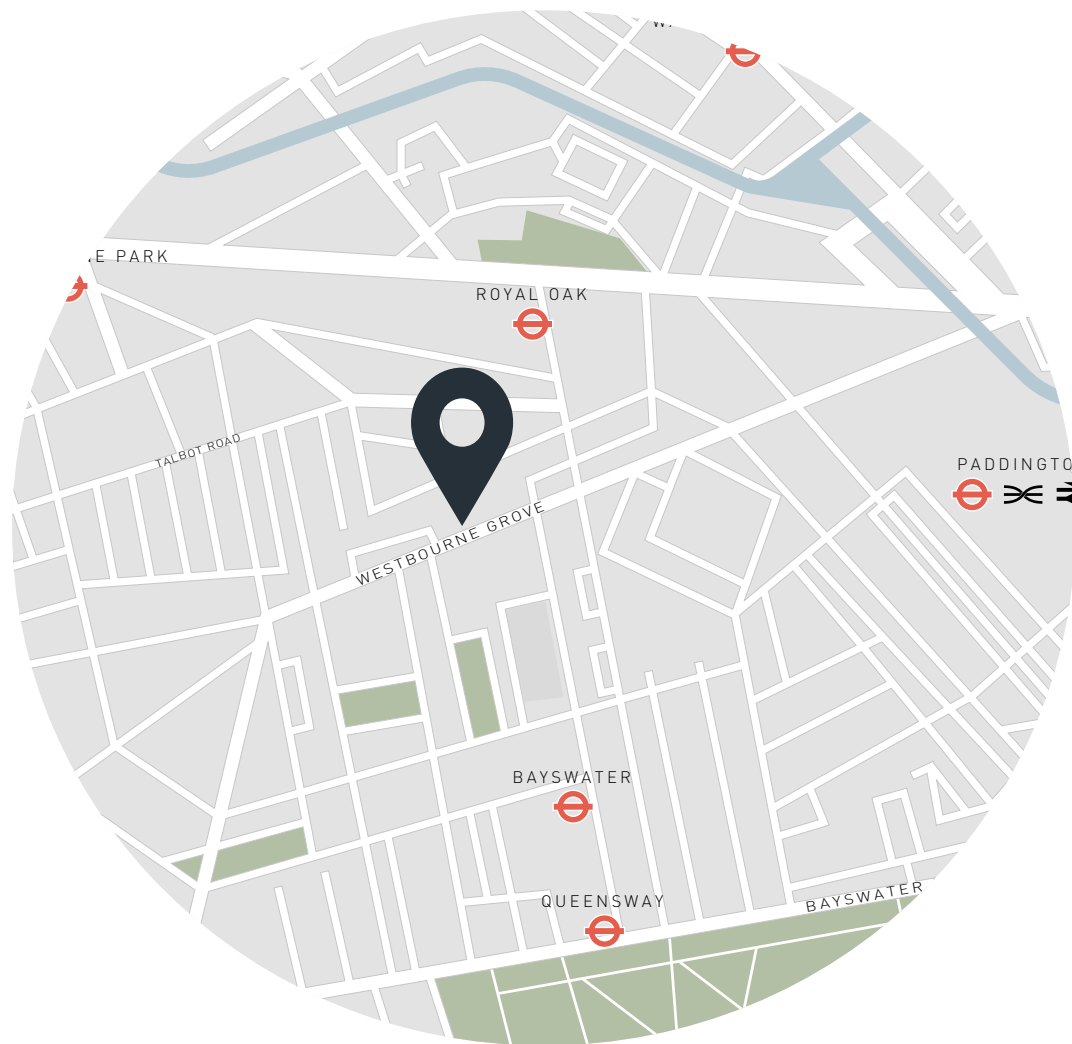
## Property Details

Open-plan kitchen, dining and reception room  
Principal bedroom suite  
Guest bedroom  
One further bedroom  
Air cooling system in all zones  
New-build apartment  
24/7 porter  
Two lifts  
Underground parking  
Miele appliances  
7 minute walk to Hyde Park  
City of Westminster

Approx 1,184 sq ft / 110 sq m  
EPC - B  
Council Tax Band - G  
Deposit Payable - £11,310

Floor plans are for illustrative purposes only and not to scale. Compliant with RICS code of measuring practice.  
Furniture layouts are indicative only. This property may be furnished, part-furnished or unfurnished. Please refer to your agent for details.





## Location

Positioned just moments away from the upmarket boutiques and eateries that line Westbourne Grove, Kensington Gardens Square is enviably placed to enjoy the best Notting Hill has to offer. Psycle and 1Rebel are nearby for invigorating workouts, followed by brunch at Beam or Sunday in Brooklyn. Pick up groceries at Planet Organic before heading to Portobello Road for its array of antiques stalls. The expansive lawns of Hyde Park can be reached in under ten minutes, which is ideal for runners and warm-weather picnics – or if you like outdoor swimming, there's the Serpentine Lido. Head to The Cow, a coveted watering hole, for evening drinks and oysters.

Bayswater - 4 mins (Circle, District)

Queensway - 7 mins (Circle)

Specialising in London  
and Ibiza's design-led homes

Let's talk  
020 7221 7817  
sales@domusnova.com  
domusnova.com

The particulars above are a guide, not an offer or contract. Descriptions, photographs and plans are not statements or representations of fact. Measurements are approximate and not to scale. Prospective purchasers must verify the accuracy of the information within the particulars. Domus Nova does not give any representations or warranties; nor represent the Seller legally. Domus Nova has no liability, for any costs, losses or expenses incurred by the Seller or a prospective buyer relating to the sales and buying transaction.

Our Sales Disclaimer, trading names and privacy policy on how your data is processed and used is found in full on our website in our [Privacy Statement](#).

© Domus Nova 2024. All rights reserved.