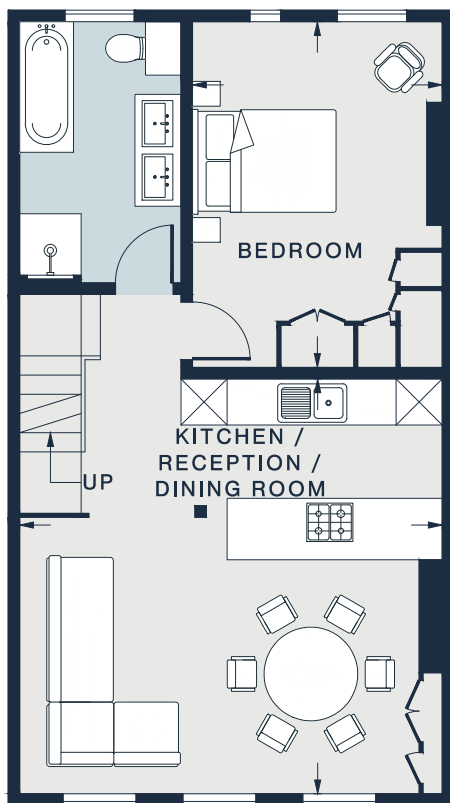
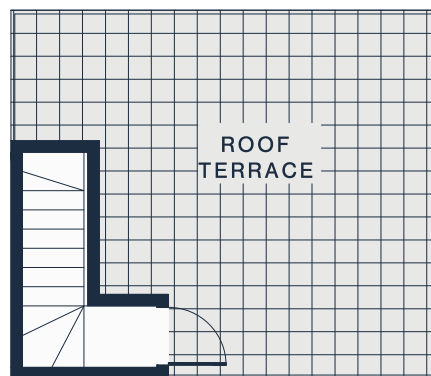


THIRD FLOOR



FOURTH FLOOR



FIFTH FLOOR

KITCHEN / RECEPTION/DINING ROOM

18'4 x 17'9 (5.5m x 5.4m)

BEDROOM

14'10 x 10'8 (4.5m x 3.2m)

Approx. Gross Internal Area = 692 sq ft / 64.4 sq m

Floor plans are for illustrative purposes only and not to scale. Compliant with RICS code of measuring practice.