

DOMUS NOVA



Kempe Road, NW6
£3,000,000



Understated, expressive and entirely in tune with Queen's Park's energy, Kempe Road reframes its period charm through a modern lens. Meticulously reworked by RISE Design Studio, contemporary interventions weave through original details with care and creativity.

From the outset, the home sets a thoughtful tone. A sedum-roofed bike store peeks from the wildflower front garden, while the door's handmade stained-glass panels cast soft colour into the entrance.

Just inside, a timber screen gently separates the hallway from the living space. Here, painted wood floors and neutral walls provide the canvas; cornicing, tiled fireplaces (salvaged from Retrouvius), and burnt orange accents bring depth and definition. A large front-facing window welcomes in light, while an open doorway draws you through to the rear of the house.

In the social heart of the home, the kitchen takes centre stage. Bespoke sage-green cabinetry by Little Greene is paired with Calacatta marble worktops and brass Beata Heuman handles – a considered combination that balances softness and structure. A state-of-the-art induction hob and stainless-steel oven are built seamlessly into the cabinetry, keeping the space sharp and functional. Heated herringbone floors lead through to the dining and lounge area, where skylights overhead diffuse daylight across the footprint. At the rear, a window seat carved into an oriel bay creates a peaceful reading nook with views of the garden.

Outside, thoughtfully landscaping – part York Stone terrace, part Easigrass lawn – is framed by climbing greenery. At the far end, a garden studio offers space to work, create or train, with Cat 6 cabling ensuring a strong connection.



















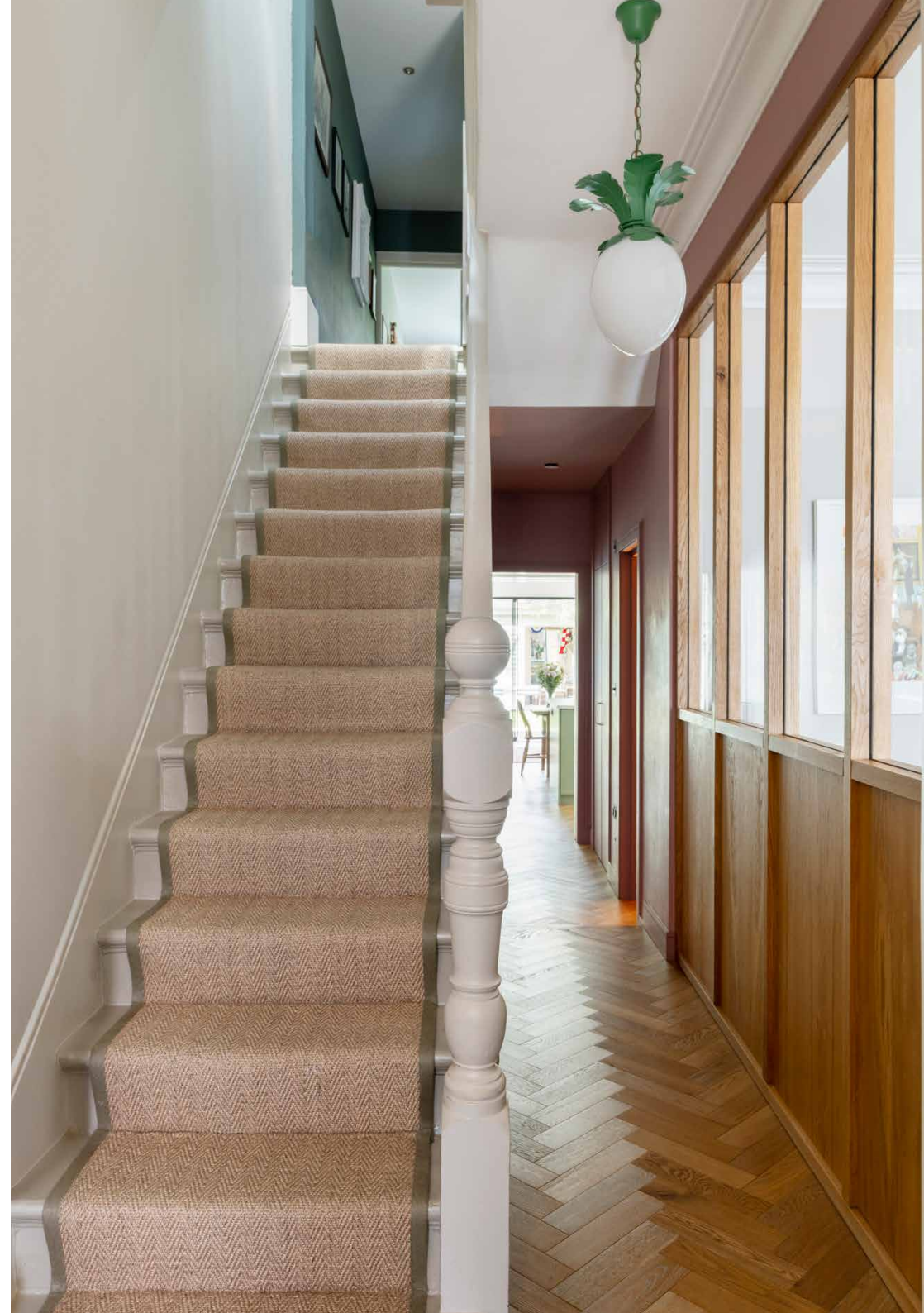
“ At the rear, a window seat carved into an oriel bay creates a peaceful reading nook with views of the garden.





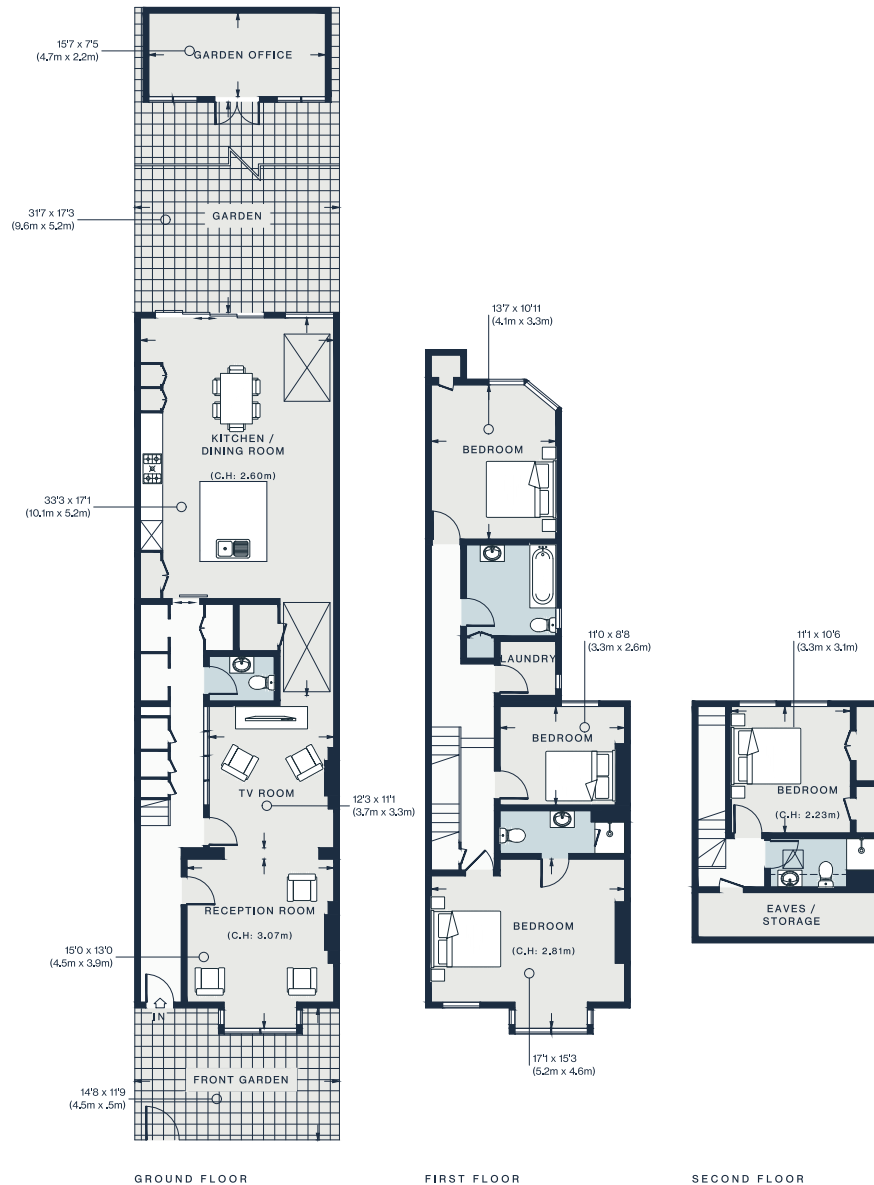
Upstairs, the principal bedroom is softly elevated in blush tones, with light wooden floors and bespoke joinery. The en suite bathroom is crisp and confident – white and navy with a walk-in rainfall shower. Two further bedrooms on this floor each have their own palette: one in soothing green, the other wrapped in Tess Newall's pale pink wallpaper. The family bathroom takes a more playful turn with butter-yellow walls and checkerboard floor tiles.

Above it all, the top floor holds the fourth bedroom – a quiet space with west-facing windows and plenty of light. A deep green shower room sits next door, brightened by a large overhead skylight.









Approx. Gross Internal Area = 2,140 sq ft / 198.8 sq m
 Outbuilding = 115 sq ft / 10.7 sq m
 Total = 2,255 sq ft / 209.5 sq m

Floor plans are for illustrative purposes only and not to scale. Compliant with RICS code of measuring practice.
 Prepared for Domus Nova. Copyright © All Rights Reserved.

Property Details

Design by RISE studios
 Spacious open-plan kitchen and dining room
 Reception and TV room
 Principal bedroom suite
 Three further bedrooms
 Family bathroom
 Shower room
 Private garden
 Versatile garden studio
 London Borough of Brent

Approx. 2,255 sq ft / 209.5 sq m
 EPC=D
 Tenure: Freehold
 Council Tax Band: F



Location

A hub for creatives, commuters and families, Queen's Park is a neighbourhood brimming with eclectic eateries and a keen sense of community. Chamberlayne Road – just a five-minute walk away – was coined London's 'hippest street' by Vogue: local favourites include Wildcard Coffee, Mr. Fish and The Salusbury wine store. The eponymous Queen's Park is on your doorstep, complete with tennis courts and a petting zoo. On Sunday mornings, head to the Farmers Market to pick up local produce.

Kensal Rise - 7 mins (Mildmay)

Queen's Park - 10 mins (Bakerloo)

Specialising in London
and Ibiza's design-led homes

Let's talk
020 7221 7817
sales@domusnova.com
domusnova.com

The particulars above are a guide, not an offer or contract. Descriptions, photographs and plans are not statements or representations of fact. Measurements are approximate and not to scale. Prospective purchasers must verify the accuracy of the information within the particulars. Domus Nova does not give any representations or warranties; nor represent the Seller legally. Domus Nova has no liability, for any costs, losses or expenses incurred by the Seller or a prospective buyer relating to the sales and buying transaction.

Our Sales Disclaimer, trading names and privacy policy on how your data is processed and used is found in full on our website in our [Privacy Statement](#).

© Domus Nova 2025. All rights reserved.