

# DOMUS NOVA



Jameson Street W8– £2,600 p/w (LL) / £4,500 p/w (SL)

In partnership with **BARNES**  
INTERNATIONAL REALTY



Tucked into the streets of Hillgate Village, this townhouse captures the rare Notting Hill duality: village calm with the city close at hand. Brick-fronted and traditional in form, it opens to interiors that favour restraint, texture and considered detail throughout.

The ground floor unfolds into a double reception room, naturally zoned beneath generous ceiling heights. West-facing sash windows draw in afternoon light, illuminating warm neutral walls and an exposed brick fireplace that anchors the dining area with rustic charm. Beyond, a relaxed sitting space centres around an olive-toned sofa and earthy textures.





West-facing sash windows draw in afternoon light, illuminating warm neutral walls and an exposed brick fireplace that anchors the dining area with rustic charm.

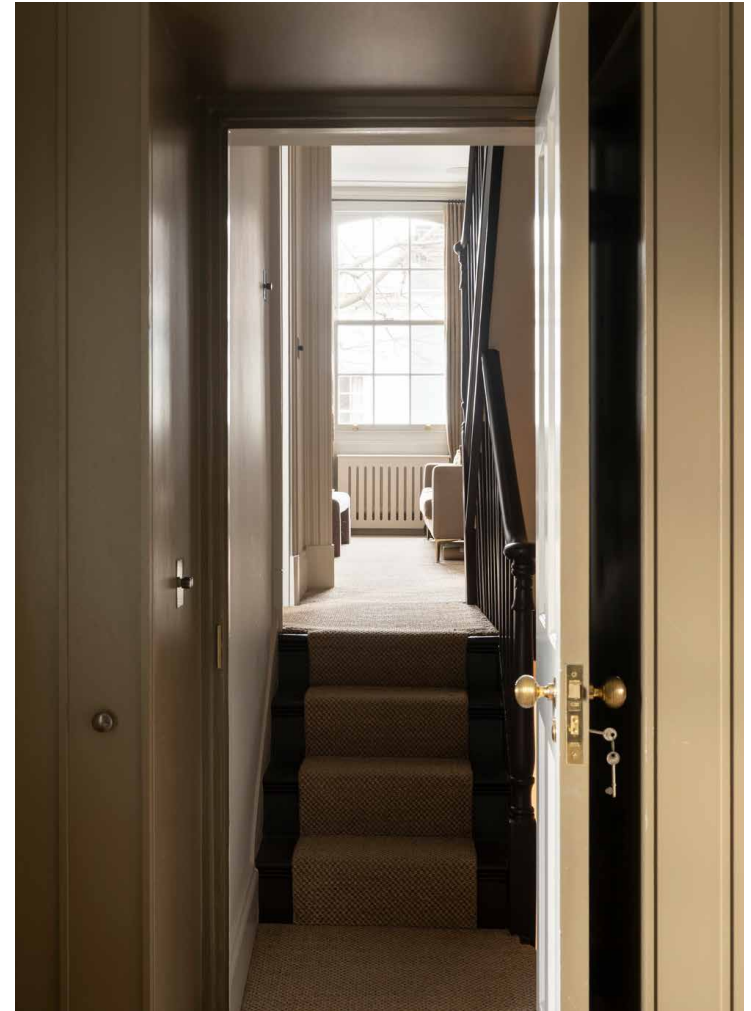


At the rear, the home opens into its defining space: an open-plan kitchen designed for everyday living. Light wooden floors run underfoot, while shaker cabinetry, a wooden island and French doors keep tradition in mind – the latter of which leads to a small patio garden. Overhead, a contemporary skylight introduces a modern counterpoint. Upstairs, a flexible social space – currently styled as a reception room – offers versatility to serve as a bedroom or home office.













Above, the principal suite occupies the second floor, where south-west facing windows and built-in wardrobes create a calm, uncluttered retreat. A second bedroom sits alongside, both served by a refined shower room finished with zellige tiles and a dual vanity. One further bedroom is found on the floor below, accompanied by a sleek family bathroom.

The home further benefits from a roof terrace – an ideal backdrop for London’s summer season.





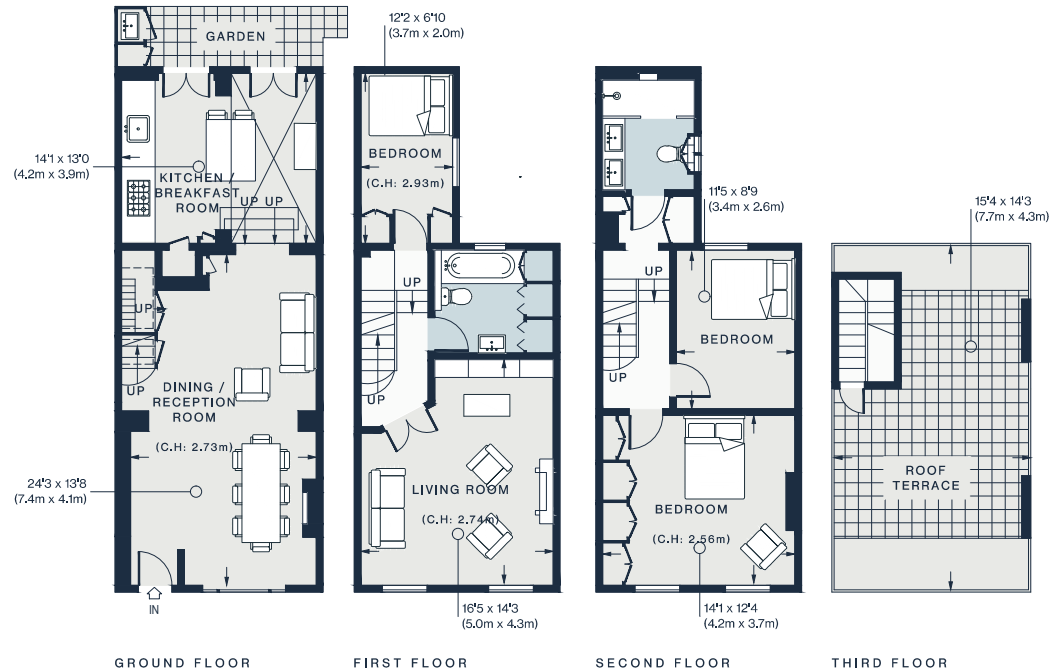






BANHAM





Ground Floor = 529 sq ft / 49.2 sq m  
First Floor = 434 sq ft / 40.3 sq m  
Second Floor = 434 sq ft / 40.3 sq m  
Third Floor = 31 sq ft / 2.9 sq m  
Approx. Gross Internal Area = 1,428 sq ft / 132.7 sq m

## Property Details

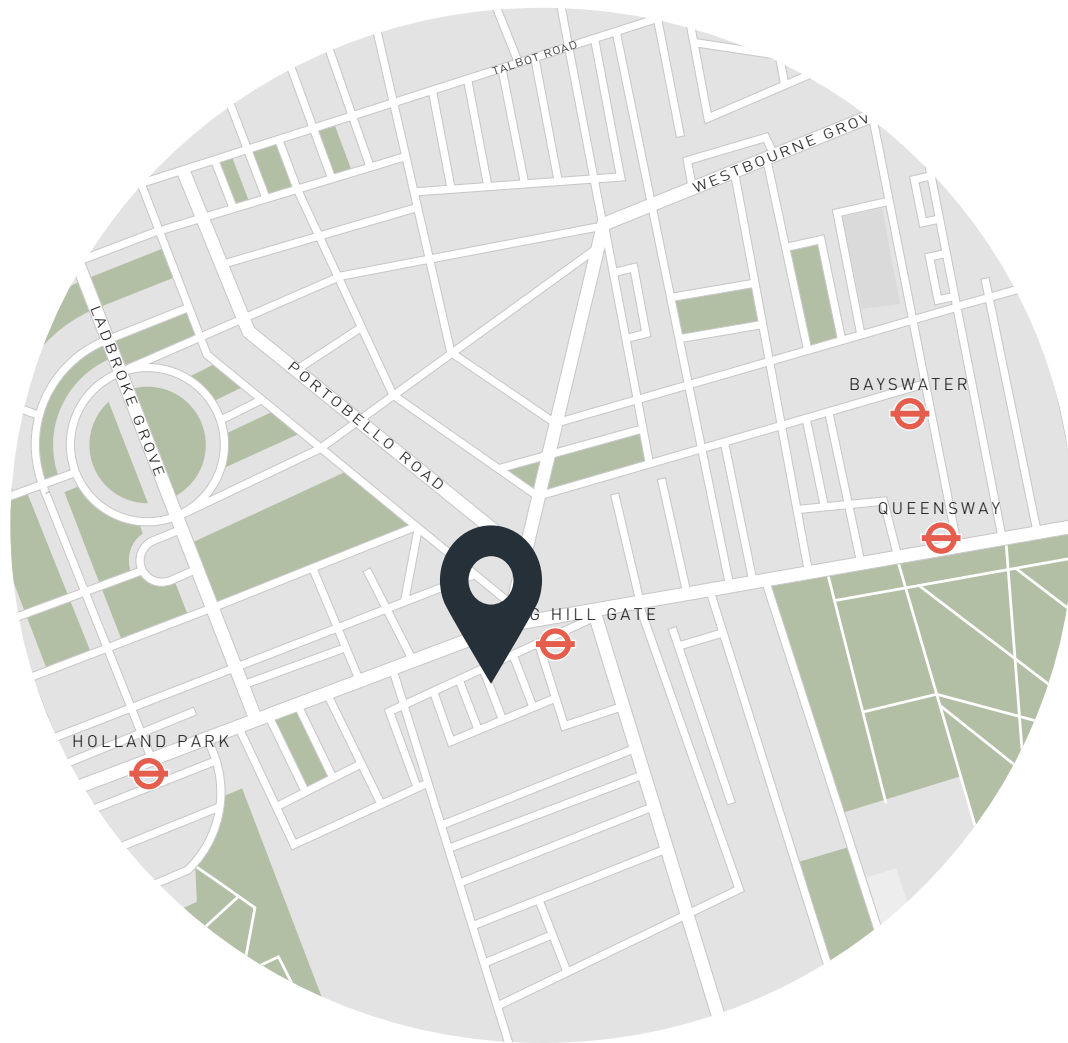
- 3 Bedrooms, 3 Bathrooms
- Open-plan dining and reception room
- Spacious eat-in kitchen
- Principal bedroom
- Two further bedrooms
- Family bathroom
- Shower room
- Patio garden
- Roof terrace
- Royal Borough of Kensington and Chelsea

Approx. 1,428 sq ft / 132.7 sq m

EPC=D

Deposit: £15,600 (LL) / £18,000 (SL)

Council Tax Band: G



## Location

Hillgate Village possesses a quiet character with its quaint cafés and eclectic eateries. On your doorstep, explore a vibrant street of pastel façades and community-minded spots. Start the day with brunch from Eggbreak, then it's less than ten minutes' walk to Portobello Road. Wander through stalls and vintage shops, stopping at Gold to enjoy seasonal small plates. A more refined selection of stores awaits at High Street Kensington. Come evening, dining options are just moments from your door. Greek food is in plentiful supply – discover a menu designed for sharing at Mediterranean bistro Suzi Tros or try the signature dishes at Mazi. For refined Japanese flavours, head to Juno Omakase. Complete the day with a drink at The Hillgate – a charming family-run gastropub with a crackling fire.

Notting Hill Gate - 2 mins (Circle, District, Central)

Holland Park -10 mins (Central)



# Who ——— we are

Forward-thinkers in property, design and culture, we're an estate agency that hits refresh.

Domus Nova was born out of a desire to do things differently; to break the traditional agency model and focus on design-led homes in London and Ibiza, all while delivering the highest levels of personal service.

Our story starts in the nineties when we founded Notting Hill's first boutique agency – and we continue to open the doors to the most remarkable spaces, revealing them to our like-minded community.

We want to help you live better – and believe considered design can do that. That's why we remain committed to building on our legacy, in collaboration with BARNES International, an established agency with a market-leading presence in 22 countries.

Uniting our local insight and curated portfolio with BARNES International's expansive reach, we can facilitate the best opportunities in not only London and Ibiza, but also across Europe, the US and further afield – whether that's a château in the South of France, a penthouse in New York, or a chalet in the Swiss Alps.



# DOMUS NOVA

Specialising in London  
and Ibiza's design-led homes

Let's talk

020 7727 1717

[lettings@domusnova.com](mailto:lettings@domusnova.com)

---

The property particulars are a guide not statements. Descriptions, photographs, and plans are for guidance and should be checked by the prospective tenant. The Property is offered "subject to contract and references". No warranties, representations, or Tenancy is given by Domus Nova. Expenses incurred by a prospective tenant will not be reimbursed if the Landlord withdraws prior to the Tenancy Agreement being signed, dated and exchanged and cleared funds received. Furniture and other items shown in a property at viewing may belong to a current tenant. The prospective tenant should verify in writing which fixtures and fittings forms part of the Tenancy. Our full lettings disclaimer together with trading names and our [Privacy Policy](#) is shown on our website

© 2025 Domus Nova in partnership with BARNES International. All rights reserved.

*In partnership with*  
**BARNES**  
INTERNATIONAL REALTY