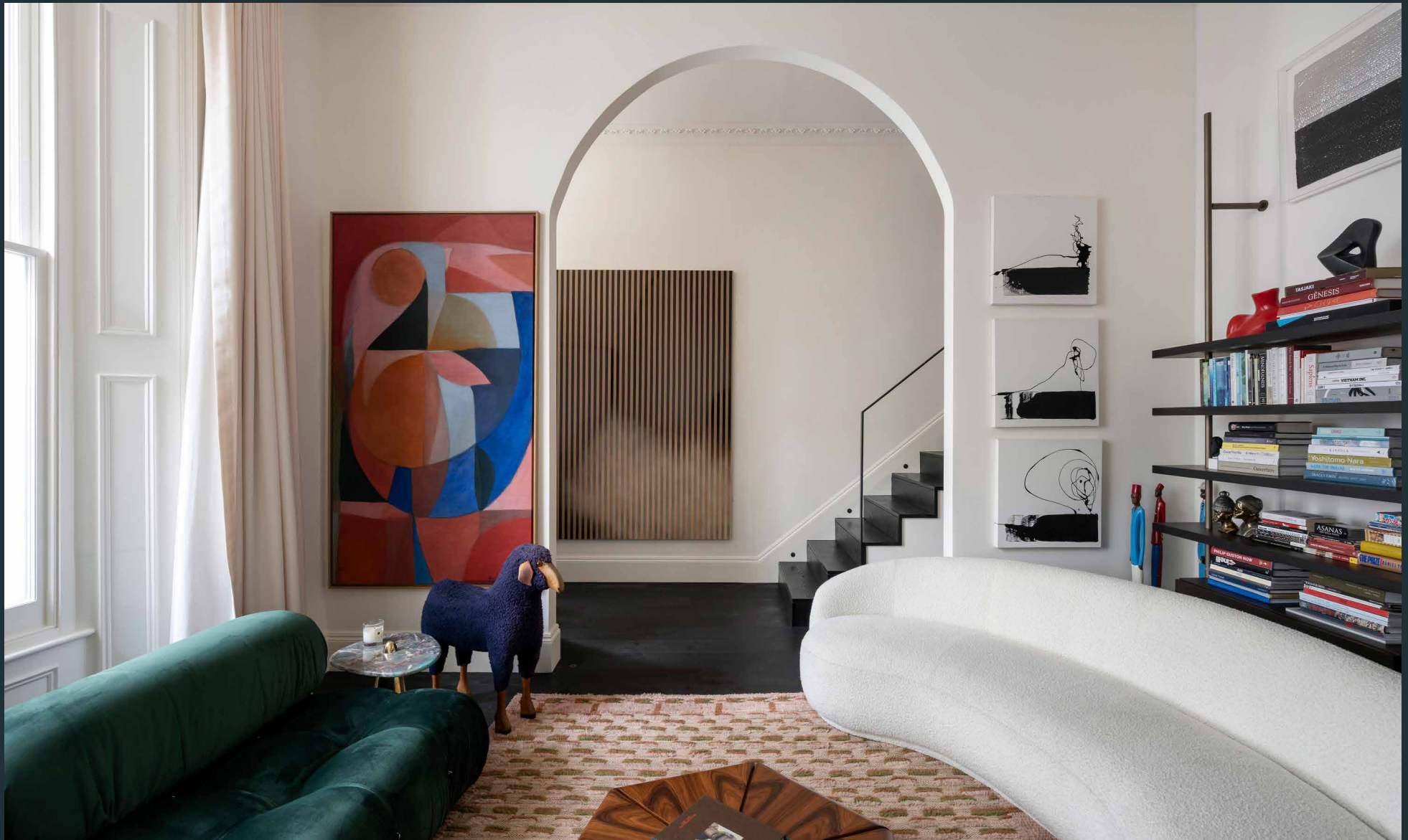


DOMUS NOVA



Inverness Terrace W2 – £2,350,000

In partnership with **BARNES**
INTERNATIONAL REALTY



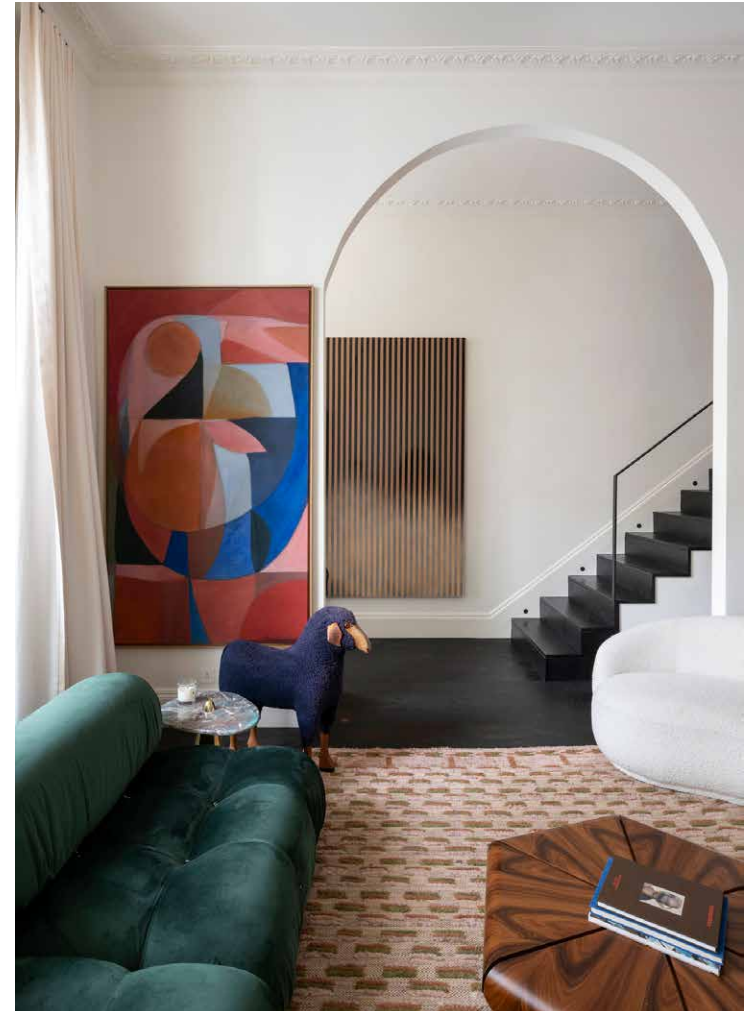
Spread across the expansive raised-ground floor of a 1900s townhouse, this two-bedroom apartment – previously featured in *Architectural Digest*, *Elle Decor* and *Vogue* – effortlessly balances the classic and contemporary. Thanks to the creative collaboration of architects Studio D3 London and FingersHome interiors, the home has been recently renovated and is replete with engaging design – including an award-winning kitchen.

Outside, Inverness Terrace's handsome façade is composed of ornate friezes, cast iron railings and a portico entrance. Beyond, the apartment opens into a voluminous reception room, with tall ceilings and large double-glazed sash windows. Pale walls are complemented with dark wood floors, complete with underfloor heating. A set of stairs leads up to the kitchen and dining room, which overlooks the living area through an open picture window. The bespoke Kochwerk design won the brand's kitchen of the year award, with its bespoke wood cabinetry, Angello Lelli art deco lighting and range of sleek appliances – including Gaggenau, Miele, Fisher & Paykel and Quooker. Tailor-made for entertaining, the innovative design features a ten-seater dining table.











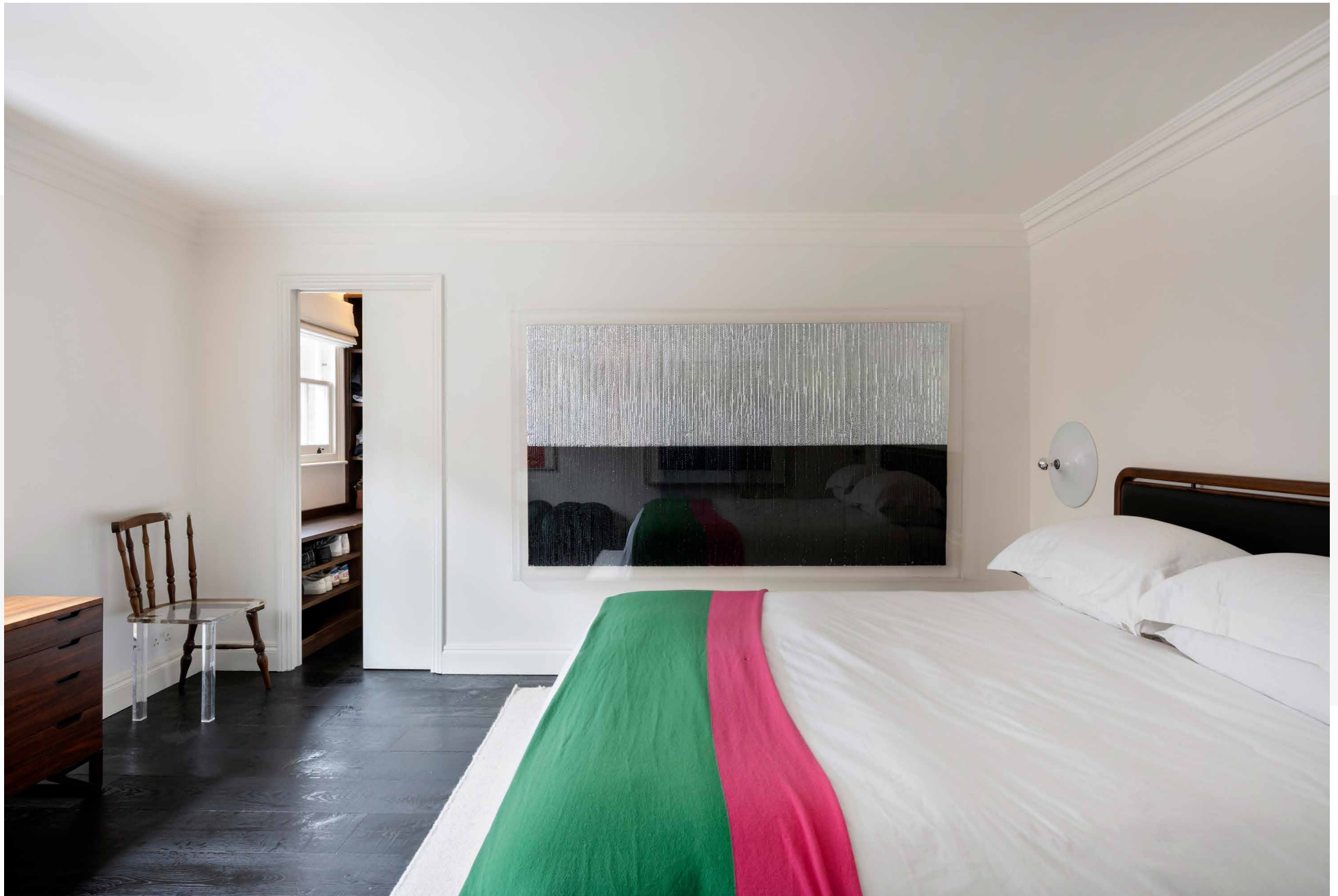


The bespoke Kochwerk design won the brand's kitchen of the year award, with its bespoke wood cabinetry, Angello Lelli art deco lighting and range of sleek appliances.



The hallway continues down to the principal bedroom suite. There's a calming, minimalist feel with the pale walls, dark floors and soft sunlight that beams through the sash windows. A sliding pocket door reveals the dressing room and en suite bathroom – featuring an oversized steam shower, gunmetal hardware, a Japanese Sensoflush toilet all wrapped in marble. The guest bedroom is a versatile space to be used for working or additional storage, served by a bathroom with black marble flooring, a built-to-measure Japanese ofuro bathtub, 1950s lighting and a mid-century mirror.













RAISED GROUND FLOOR

RECEPTION ROOM
17'4 x 14'8 (5.2m x 4.4m)

PRINCIPAL BEDROOM
14'2 x 14'1 (4.3m x 4.3m)

KITCHEN / DINING ROOM
17'3 x 12'2 (5.2m x 3.7m)

BEDROOM
14'4 x 10'10 (4.3m x 3.3m)

Approx. Gross Internal Area = 1,250 sq ft / 116.1 sq m

Floor plans are for illustrative purposes only and not to scale. Compliant with RICS code of measuring practice.
Prepared for Domus Nova. Copyright © All Rights Reserved.

Property Details

2 Bedrooms, 2 Bathrooms
Architecture by Studio D3
Interior design by FingersHome
Split-level kitchen, dining and reception room
Principal bedroom with dressing room
Guest bedroom
Guest bathroom
Parking permits on street
Double-glazing throughout
ADT alarm system
City of Westminster

Approx. 1,250 sq ft / 116.1 sq m

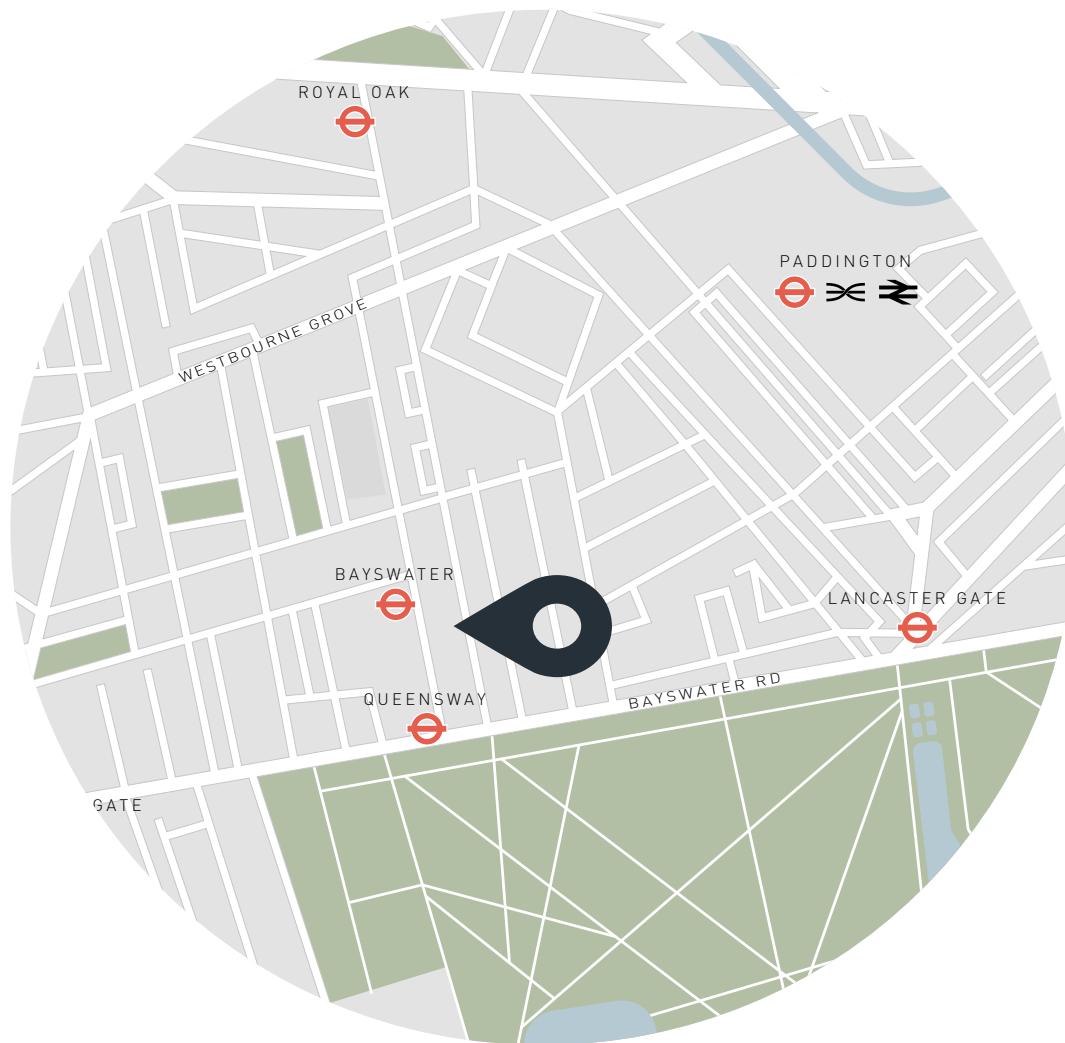
EPC=C

Tenure: Share of Freehold

Lease Length: circa 980 years

Annual Service Charge: Approx. £4,580

Council Tax Band: E



Location

Caught between the buzz of Notting Hill and the quietude of Hyde Park, Inverness Terrace is a tranquil enclave in one of the most sought-after areas of West London. Ease into the day with coffee from Prezzemole e Vitale, a personal training session at Bodyism or brunch at Beam. Then stock up on essentials at Waitrose or Planet Organic. The verdant lawns of Hyde Park are 100 metres away, ideal for meditative strolls or invigorating runs. For relaxation, the Six Senses Spa at the nearby Whiteley's development will be the UK's first. Round off the day with dinner at Mediterranean restaurant Wild or Endo Kazutoshi's sushi hotspot Sumi. With several tube stations nearby, there's quick access to the city and beyond.

Bayswater - 2 mins (Circle, District)

Queensway - 4 mins (Central)



Who ——— we are

Forward-thinkers in property, design and culture, we're an estate agency that hits refresh.

Domus Nova was born out of a desire to do things differently; to break the traditional agency model and focus on design-led homes in London and Ibiza, all while delivering the highest levels of personal service.

Our story starts in the nineties when we founded Notting Hill's first boutique agency – and we continue to open the doors to the most remarkable spaces, revealing them to our like-minded community.

We want to help you live better – and believe considered design can do that. That's why we remain committed to building on our legacy, in collaboration with BARNES International, an established agency with a market-leading presence in 22 countries.

Uniting our local insight and curated portfolio with BARNES International's expansive reach, we can facilitate the best opportunities in not only London and Ibiza, but also across Europe, the US and further afield – whether that's a château in the South of France, a penthouse in New York, or a chalet in the Swiss Alps.



DOMUS NOVA

Specialising in London
and Ibiza's design-led homes

Let's talk

020 7221 7817

sales@domusnova.com

The particulars above are a guide, not an offer or contract. Descriptions, photographs and plans are not statements or representations of fact. Measurements are approximate and not to scale. Prospective purchasers must verify the accuracy of the information within the particulars. Domus Nova does not give any representations or warranties; nor represent the Seller legally. Domus Nova has no liability, for any costs, losses or expenses incurred by the Seller or a prospective buyer relating to the sales and buying transaction.

Our Sales Disclaimer, trading names and privacy policy on how your data is processed and used is found in full on our website in our [Privacy Statement](#).

© 2025 Domus Nova in partnership with BARNES International. All rights reserved.

In partnership with
BARNES
INTERNATIONAL REALTY