

DOMUS NOVA



Villa Solis, Caló d'en Real - For 10 guests

In partnership with **BARNES**
INTERNATIONAL REALTY



In this cliff-top five-bedroom villa for sale, contemporary design, direct sea access and far-reaching Mediterranean views shape life on Ibiza's southwest coast.

Set within the private community of Caló d'en Real, this cliff-top villa occupies a coveted position above the sea, with uninterrupted vistas across the Mediterranean and the island's western sunsets. Recently renovated, the architecture is pared-back and contemporary: cubic whitewashed volumes softened by stone pathways, while a staircase carved into the rocks leads directly from the grounds to a small sheltered cove below.









Outside, a sequence of terraces unfolds towards the coastline. Beneath a shaded whitewashed pergola, an al fresco dining area is positioned for long lunches overlooking the water, while the swimming pool gazes out across uninterrupted sea views beyond. As evening falls, the west-facing orientation brings uninterrupted sunset views across the horizon.

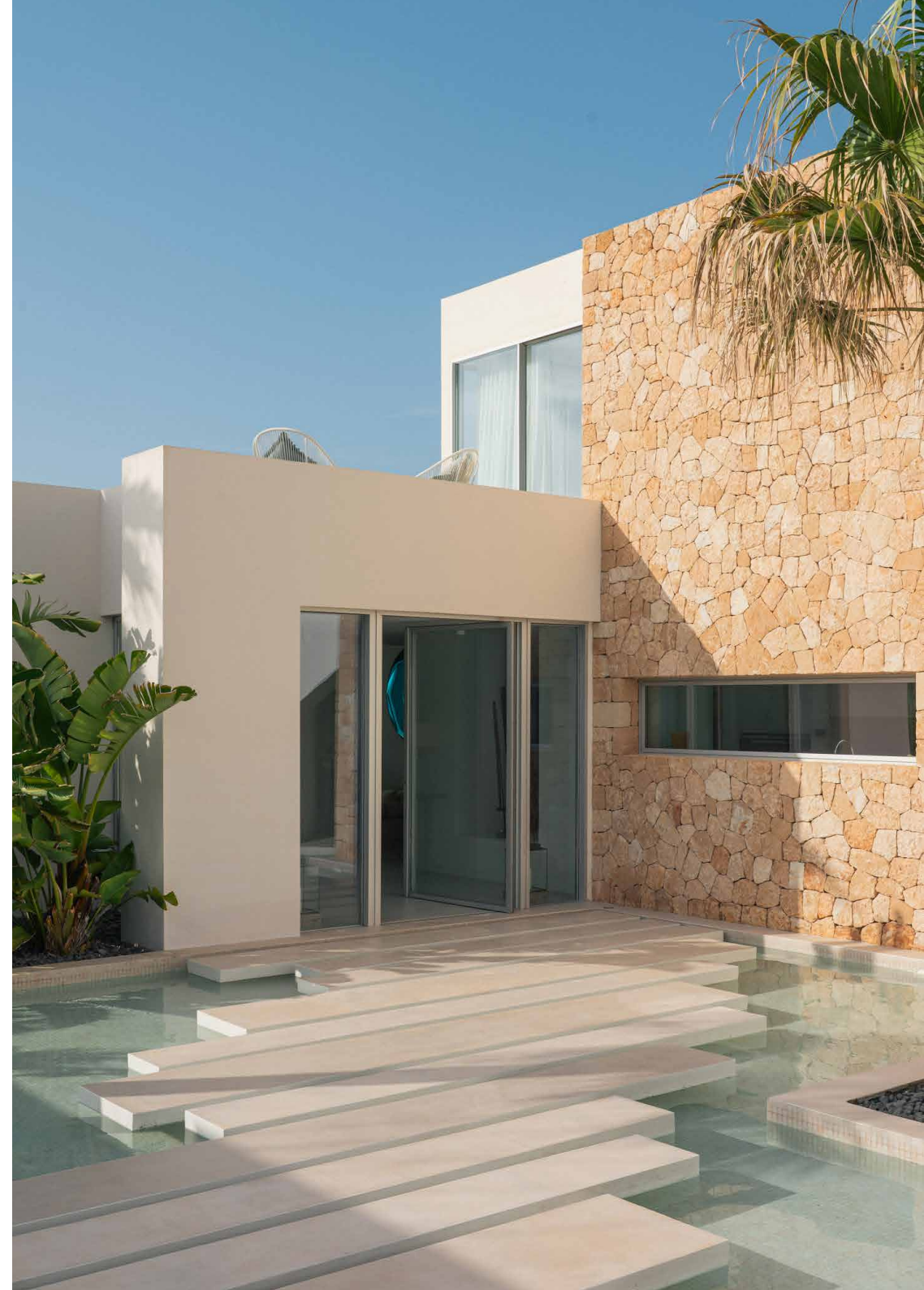
Pathways and exterior staircases connect the different levels of the house, ascending to a roof terrace that's tailor-made for stargazing. Elsewhere, a set of steps descend directly to the sea – an increasingly rare feature on this stretch of coastline.





A stone walkway bordered by water makes a striking first impression. Inside, the open-plan reception room is arranged as one expansive open-plan space, framed by panoramic windows and sliding glass doors. Pale stone floors run throughout, gently enhancing the reams of natural light, while high ceilings and clean lines lend a sense of volume and calm.

The kitchen sits adjacent in an open configuration designed for entertaining. Streamlined cabinetry and integrated appliances maintain the minimalist feel, while the dining area opens directly onto the terraces beyond. Nearby, a separate laundry and utility space is discreetly positioned away from the main living areas.





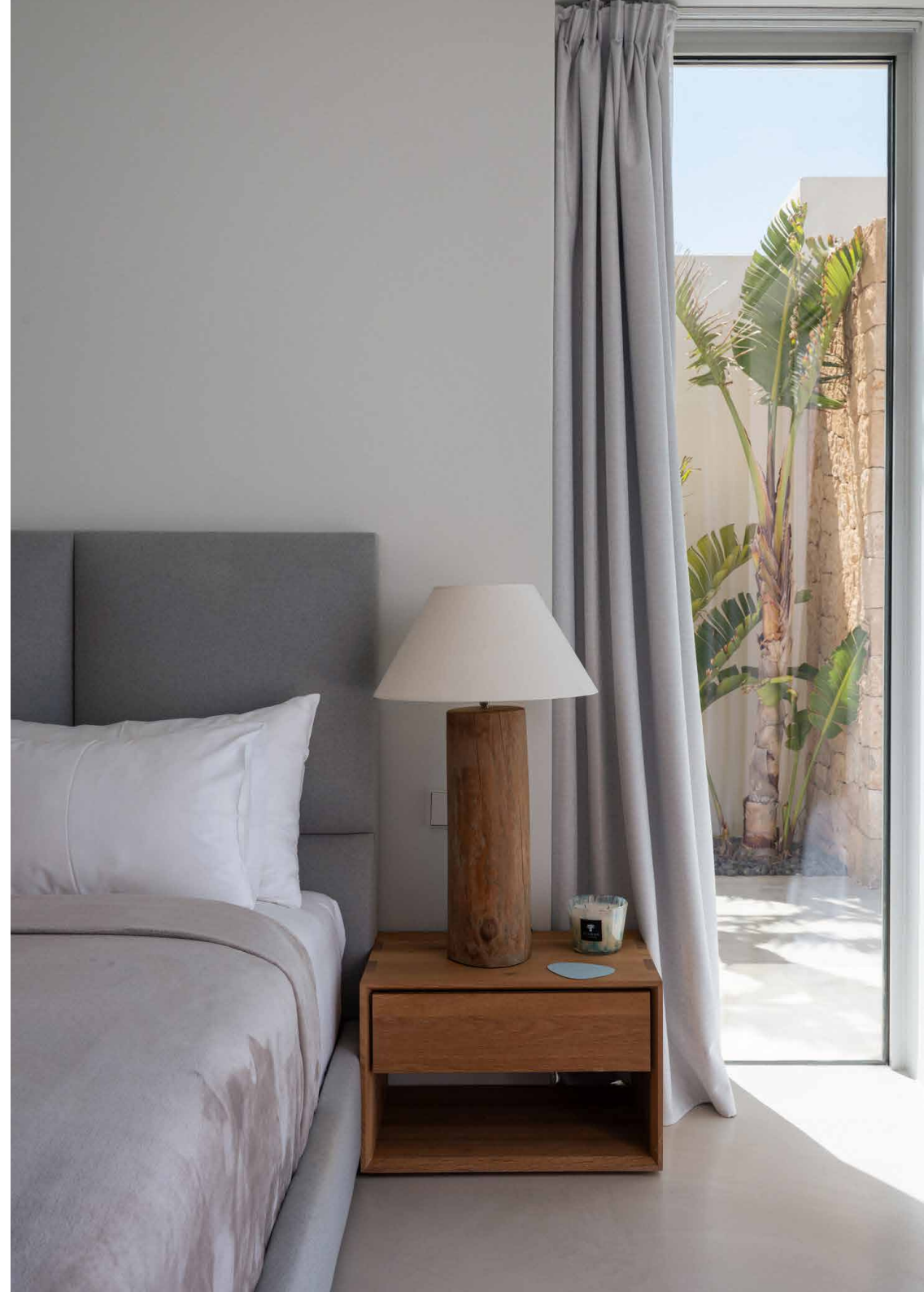




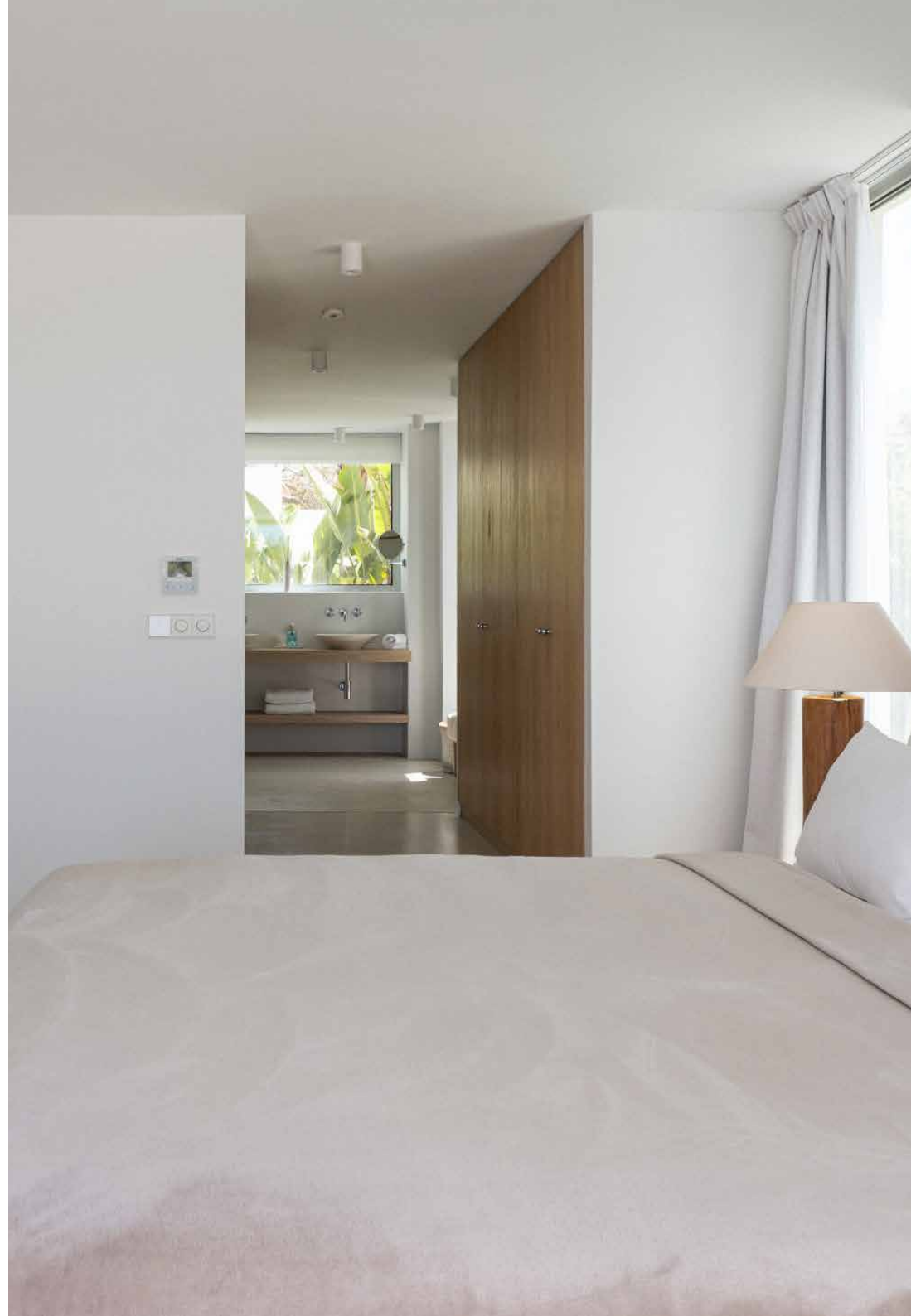




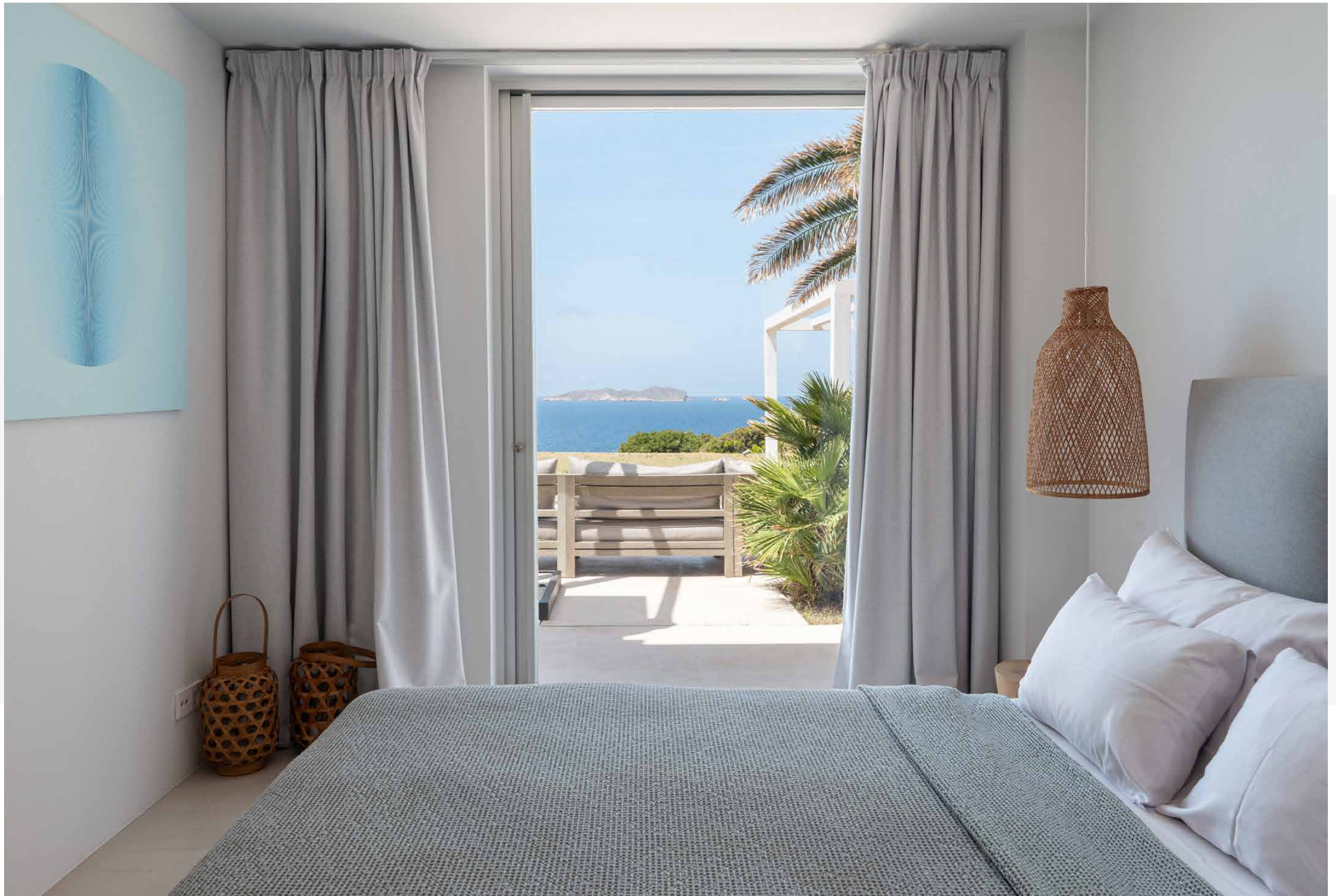
Spacious and sunlit, the principal bedroom features a walk-in wardrobe, en suite bathroom and direct access to the terraces overlooking the sea. Additional bedrooms continue the restrained material palette of stone, whitewashed walls and natural textures, each with its own en suite bathroom and considered outlook. A separate guest suite and an independent staff room are accessed externally, offering flexibility for visitors or live-in staff.



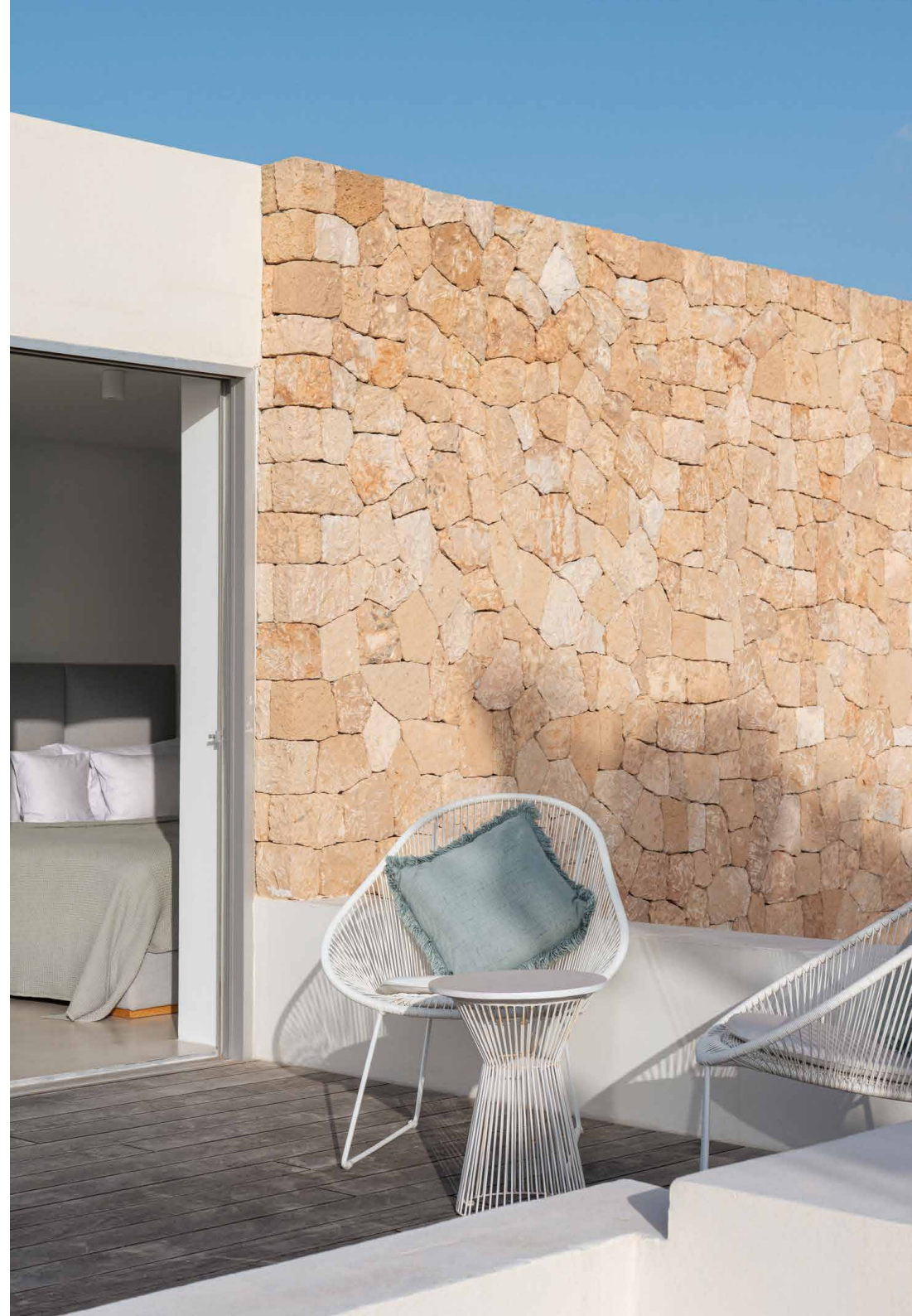














Property Details

Frontline position in Caló d'en Real
Direct sea access via private staircase
Swimming pool with sea views
Multiple terraces and outdoor dining areas
Five bedroom suites
Independent guest and staff accommodation
West-facing sunset views
Recently renovated throughout
Private parking

5 bedrooms, 5 bathrooms

Build size: 206 sq m

Plot size: 800 sq m



Location

Pine-covered cliffs, small coves and west-facing sea views define this pocket of southwest Ibiza. This private residential community was originally conceived in the 1970s by Belgian architect André Jacqmain and remains one of the island's most discreet coastal enclaves. Head to the village of San José, where island creatives showcase their produce and handmade goods at the weekly artisanal market, followed by a meal at family-run Sa Soca. For nature enthusiasts, drive down to the ecologically diverse UNESCO World Heritage Site of Ses Salines, or it's a short drive to Ibiza Town for its shopping and fine dining scene.

Cala Tarida — 10 minutes

Cala Vadella — 8 minutes

Sant Josep de sa Talaia — 15 minutes

Ibiza Airport — 25 minutes

Ibiza Town — 30 minutes



Who ——— we are

Forward-thinkers in property, design and culture, we're an estate agency that hits refresh.

Domus Nova was born out of a desire to do things differently; to break the traditional agency model and focus on design-led homes in London and Ibiza, all while delivering the highest levels of personal service.

Our story starts in the nineties when we founded Notting Hill's first boutique agency – and we continue to open the doors to the most remarkable spaces, revealing them to our like-minded community.

We want to help you live better – and believe considered design can do that. That's why we remain committed to building on our legacy, in collaboration with BARNES International, an established agency with a market-leading presence in 22 countries.

Uniting our local insight and curated portfolio with BARNES International's expansive reach, we can facilitate the best opportunities in not only London and Ibiza, but also across Europe, the US and further afield – whether that's a château in the South of France, a penthouse in New York, or a chalet in the Swiss Alps.



DOMUS NOVA

Specialising in London
and Ibiza's design-led homes

Let's talk

+34 871 51 53 02

ibiza@domusnova.com

The property particulars are a guide not statements. Descriptions, photographs, and plans are for guidance and should be checked by a prospective purchaser or tenant. The Property is offered "subject to contract". No warranties, representations, or Tenancy is given by Domus Nova. Expenses incurred by a prospective tenant or buyer will not be reimbursed if the Landlord or the Seller withdraws prior to the Tenancy Agreement being signed, dated and exchanged and cleared funds received. Further details of the Disclaimer together with trading names and our Privacy Policy is shown on our website. The IVA position relating to the property may change without notice.

View our privacy policy on how your data is processed and used. To find out how we process Personal Data, please refer to our Privacy Statement and other notices at [Privacy Statement](#).

© 2025 Domus Nova in partnership with BARNES International. All rights reserved.

In partnership with
BARNES
INTERNATIONAL REALTY