

DOMUS NOVA



Villa Angelica, San Miguel – For 12 guests

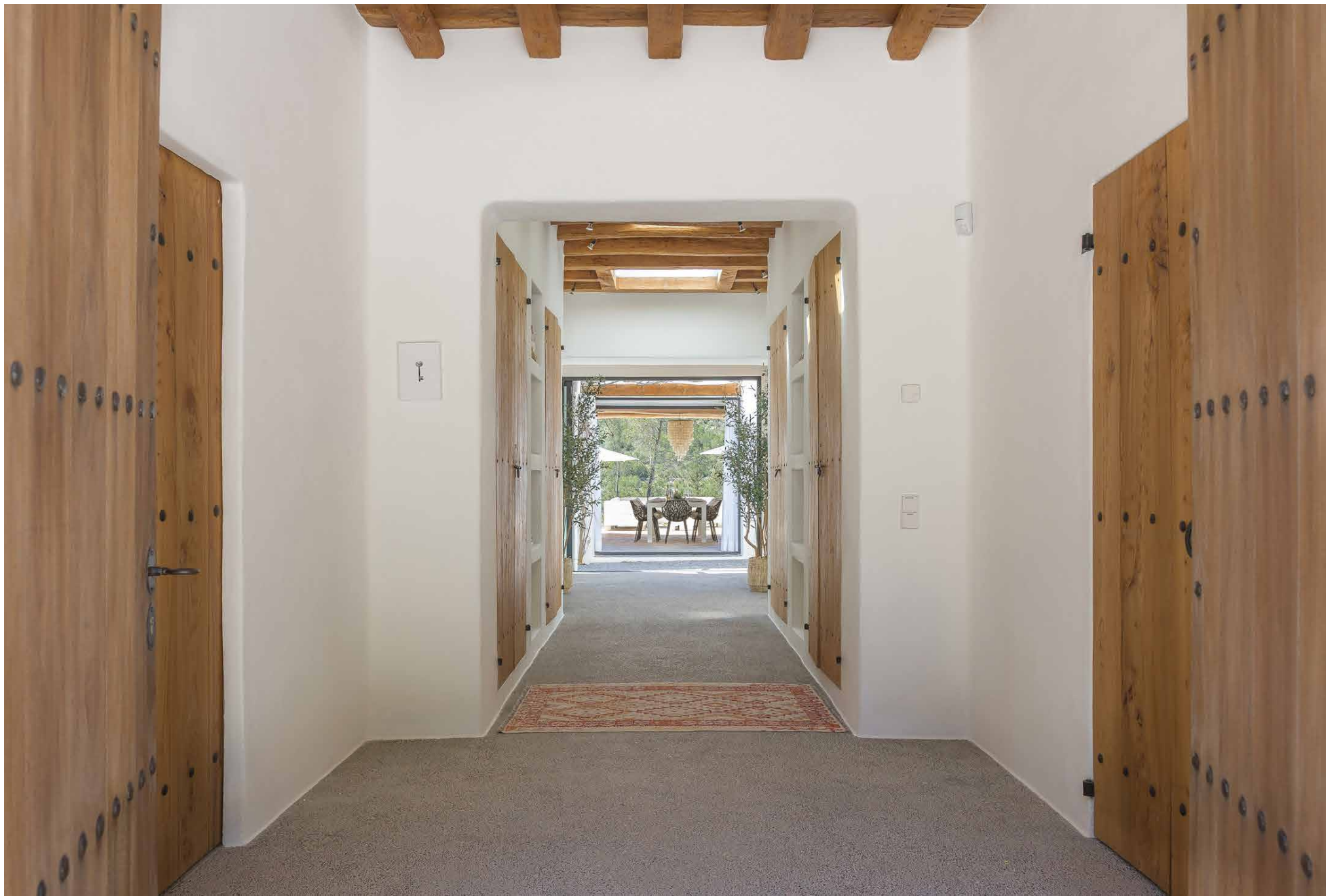
In partnership with **BARNES**
INTERNATIONAL REALTY

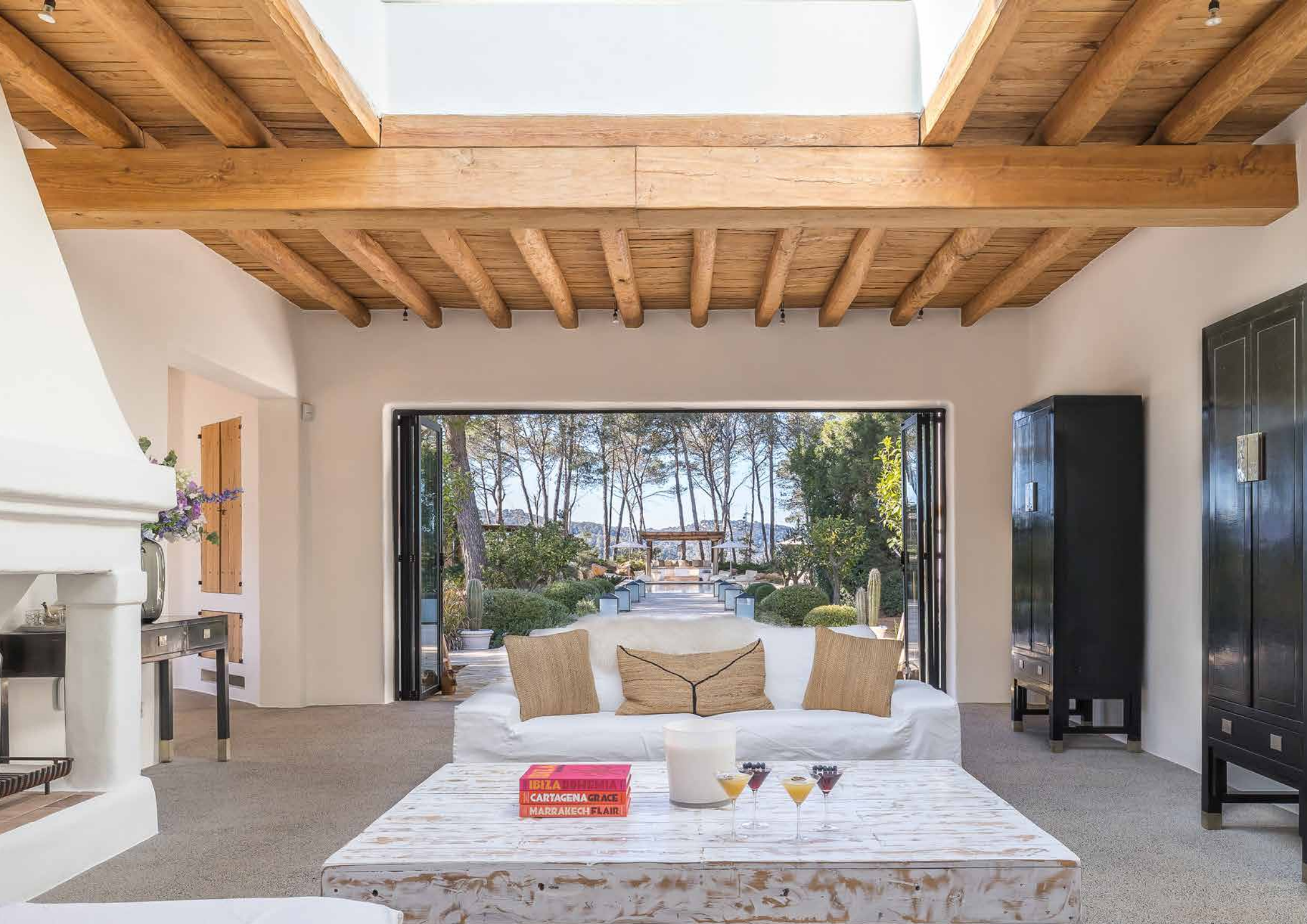




Set against sun-drenched hills and fragrant pine forests, Villa Angelica encapsulates the quiet serenity of northern Ibiza. Traditional whitewashed walls and manicured orange trees frame the entrance, setting a scene for inside-out living. Here, heritage meets modern living – a dialogue between authentic island architecture and contemporary refinement.

Through double wooden doors lies the heart of the home: a skylit living space that feels calm and composed. Daylight filters through a large skylight, illuminating the natural palette – crisp white sofas, tactile woven cushions, a rustic wooden coffee table and a pair of dark timber cabinets. A columned fireplace forms a sculptural centrepiece, balancing grandeur with comfort. From here, sightlines extend through bi-fold doors to the garden – a living canvas of stone, water and greenery.





IBIZA
CARTAGENA GRACE
MARRAKECH FLAIR



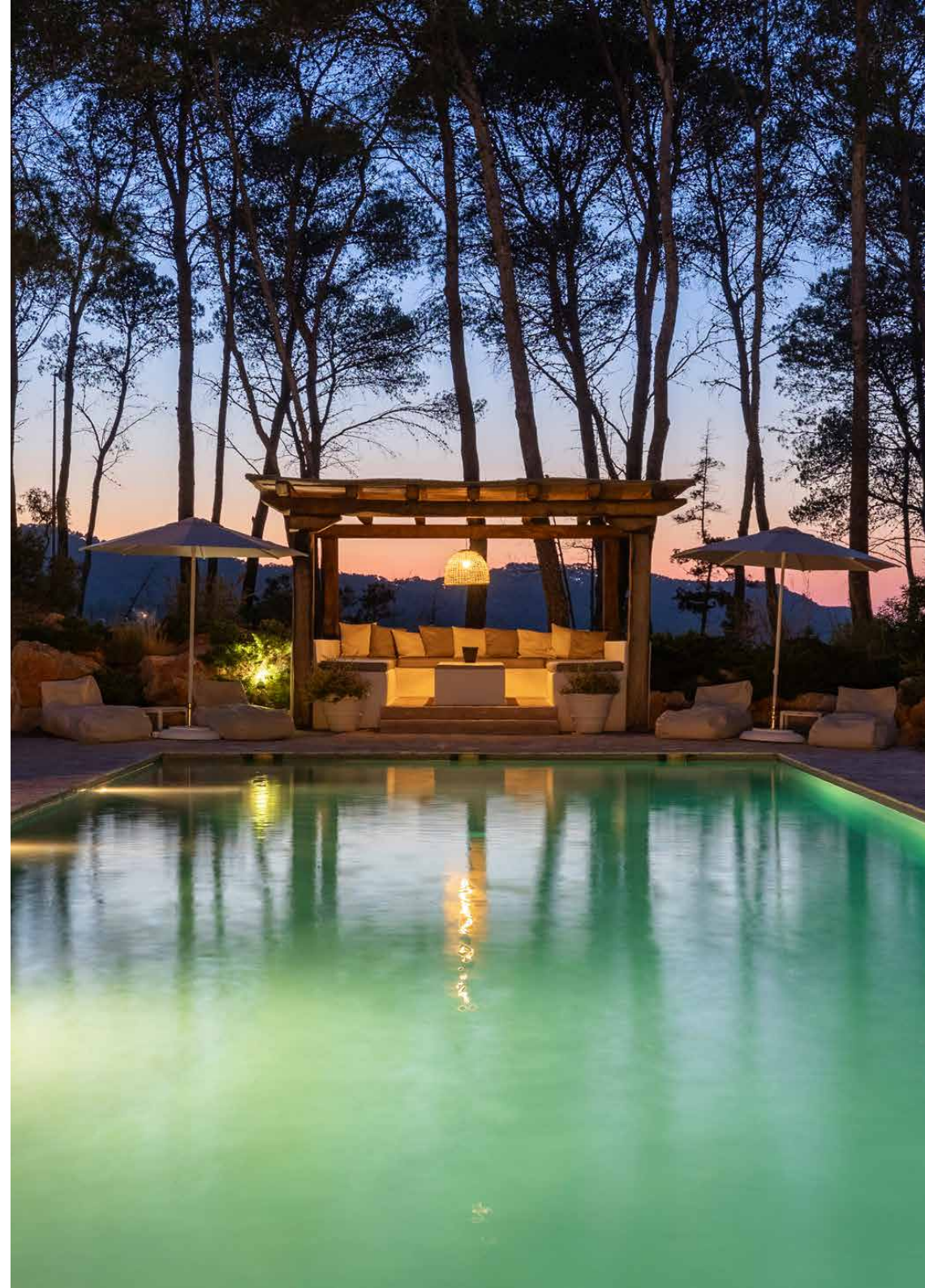
Outside, serenity takes form in an 18-metre salt-filtered pool, surrounded by an expansive stone daybed and accompanying loungers, and a pergola-covered seating area that becomes the setting for golden-hour gatherings. The outdoor kitchen – complete with a Boretti gas barbecue, fridge-freezer and dining space – embraces the island’s al fresco rhythm. Beyond, a secluded yoga deck sits among the trees, offering a space for meditation and reflection with a view.







“ Outside, serenity takes form in an 18-metre salt-filtered pool, surrounded by an expansive stone daybed and accompanying loungers, and a pergola-covered seating area that becomes the setting for gathering at golden-hour.











Back inside, the main kitchen is a masterclass in Ibicencan design – where craftsmanship meets contemporary living. A Sabina ceiling and wood-trimmed hood draw the eye upward, while neutral counters rest on whitewashed cabinetry with hand-crafted wooden accents. Integrated Miele and Liebherr appliances sit discreetly within the units and wall niches, uniting form and function. A duo of sinks with Quooker taps and an osmosis filtered water tap ensure entertaining comes easy. At the room’s core, an island plus a 12-seat dining table, anchored by a statement fireplace. Sliding glass doors open to reveal sweeping views across the church of San Miguel and the home’s manicured grounds. A semi-outdoor dining space continues the visual rhythm – defined by exposed beams, a commanding fireplace and uninterrupted vistas.



IT IS SEAMH
LUMBER
TWO WITH FIVE
DALLYMENTO
SHEETS
FIVE TWO
EIGHT EIGHT
SEVENTEEN
SEVENTEEN
TEN SEVEN



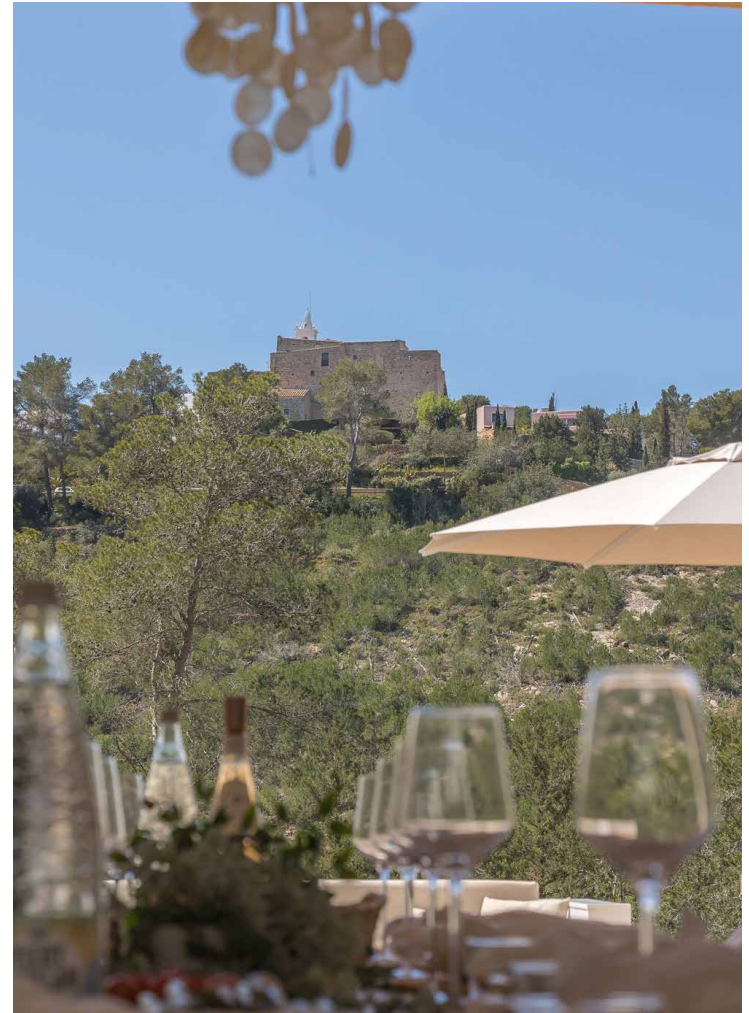




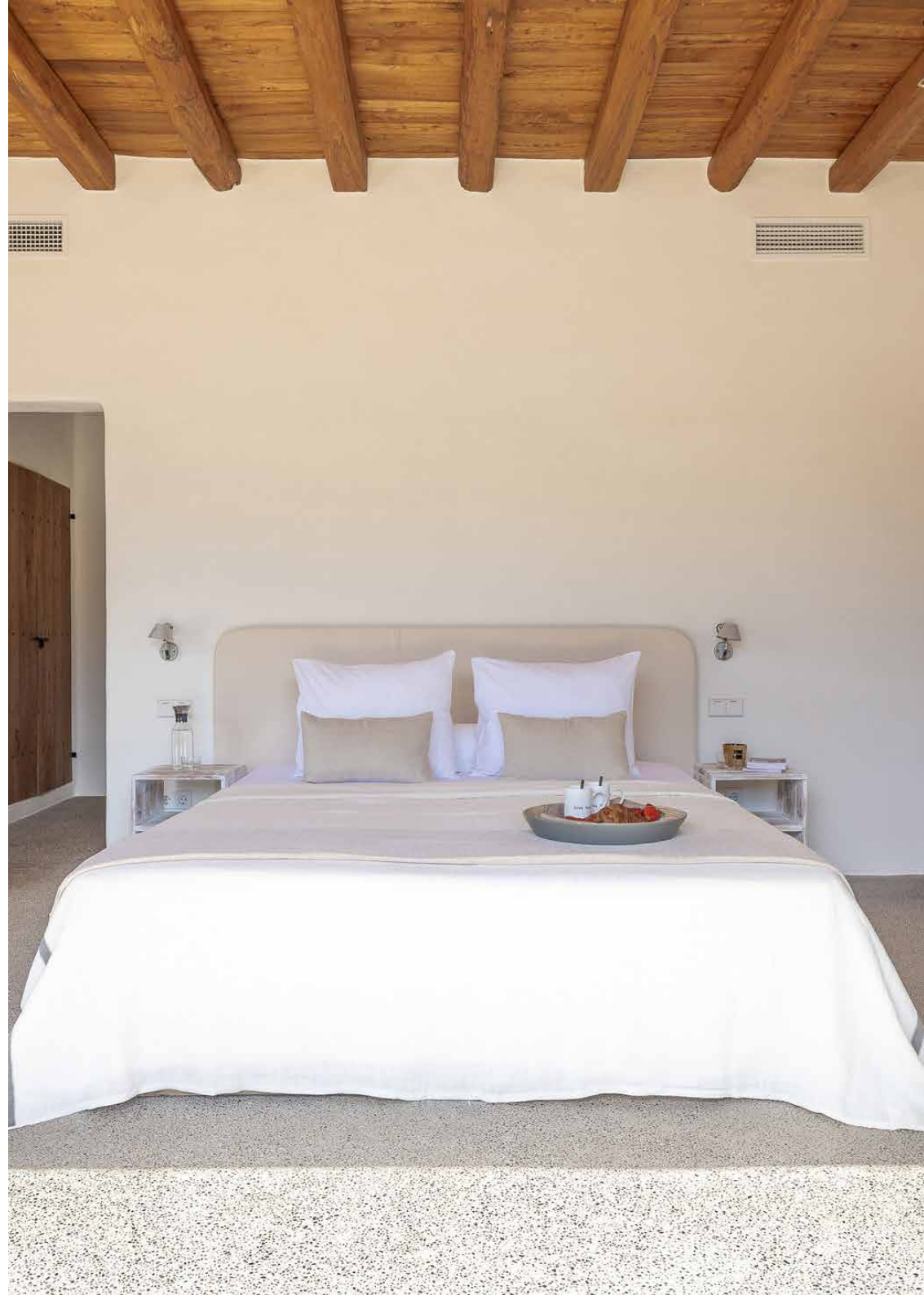
IT IS
FIVE
TEN O'CLOCK







Six serene bedrooms continue the dialogue between texture and tone. Each pairs neutral hues with organic materials, creating a sense of harmony and retreat. Pocket shutters keep things cool, while sliding doors open onto private terraces. Every room enjoys an en-suite bathroom with stone vanity tops and Campos de Ibiza toiletries. In the principal suite, a deep bathtub faces the hills, with views across to San Miguel's historic church.













Property Details

Designed by Blakstad
Countryside views
Six bedroom suites with terrace access
Open-plan kitchen and dining room
Living area with skylight and Sabina beams
18-metre salt filtered pool
Poolside summer kitchen with barbecue
Outdoor dining area and fireplace
Shaded chill-out areas
Cinema room
SONOS music system
Air conditioning
Monday – Friday housekeeping

6 bedrooms, 6 bathrooms
Tourist License: ETV-1672E2



Location

The unspoiled, rural north of the island is prime territory for a secluded getaway. Privacy comes naturally – though it's not hard to explore. Head into San Miguel to explore one of Ibiza's oldest church-fortresses, then continue the evening dining on fresh fish in Port de San Miguel followed by taking in the sunset at Benirrás. Hop in the car, drive south and you'll be in bohemian Santa Gertrudis in 10 minutes.

Benirras (12 mins)

Port de San Miguel (7 mins)

Ibiza Town (25 mins)

Ibiza Airport (30 mins)



Who ——— we are

Forward-thinkers in property, design and culture, we're an estate agency that hits refresh.

Domus Nova was born out of a desire to do things differently; to break the traditional agency model and focus on design-led homes in London and Ibiza, all while delivering the highest levels of personal service.

Our story starts in the nineties when we founded Notting Hill's first boutique agency – and we continue to open the doors to the most remarkable spaces, revealing them to our like-minded community.

We want to help you live better – and believe considered design can do that. That's why we remain committed to building on our legacy, in collaboration with BARNES International, an established agency with a market-leading presence in 22 countries.

Uniting our local insight and curated portfolio with BARNES International's expansive reach, we can facilitate the best opportunities in not only London and Ibiza, but also across Europe, the US and further afield – whether that's a château in the South of France, a penthouse in New York, or a chalet in the Swiss Alps.



DOMUS NOVA

Specialising in London
and Ibiza's design-led homes

Let's talk

+34 871 51 53 02

ibiza@domusnova.com

The property particulars are a guide not statements. Descriptions, photographs, and plans are for guidance and should be checked by a prospective purchaser or tenant. The Property is offered "subject to contract". No warranties, representations, or Tenancy is given by Domus Nova. Expenses incurred by a prospective tenant or buyer will not be reimbursed if the Landlord or the Seller withdraws prior to the Tenancy Agreement being signed, dated and exchanged and cleared funds received. Further details of the Disclaimer together with trading names and our Privacy Policy is shown on our website. The IVA position relating to the property may change without notice.

View our privacy policy on how your data is processed and used. To find out how we process Personal Data, please refer to our Privacy Statement and other notices at [Privacy Statement](#).

© 2025 Domus Nova in partnership with BARNES International. All rights reserved.

In partnership with
BARNES
INTERNATIONAL REALTY