

DOMUS NOVA



Casa California, Jesús

For 8 guests



Imagined by Ibiza Interiors, this four-bedroom finca to rent is set to soothe with a harmonious blend of Ibicencan textures, mid-century Nordic furnishings and contemporary technologies.

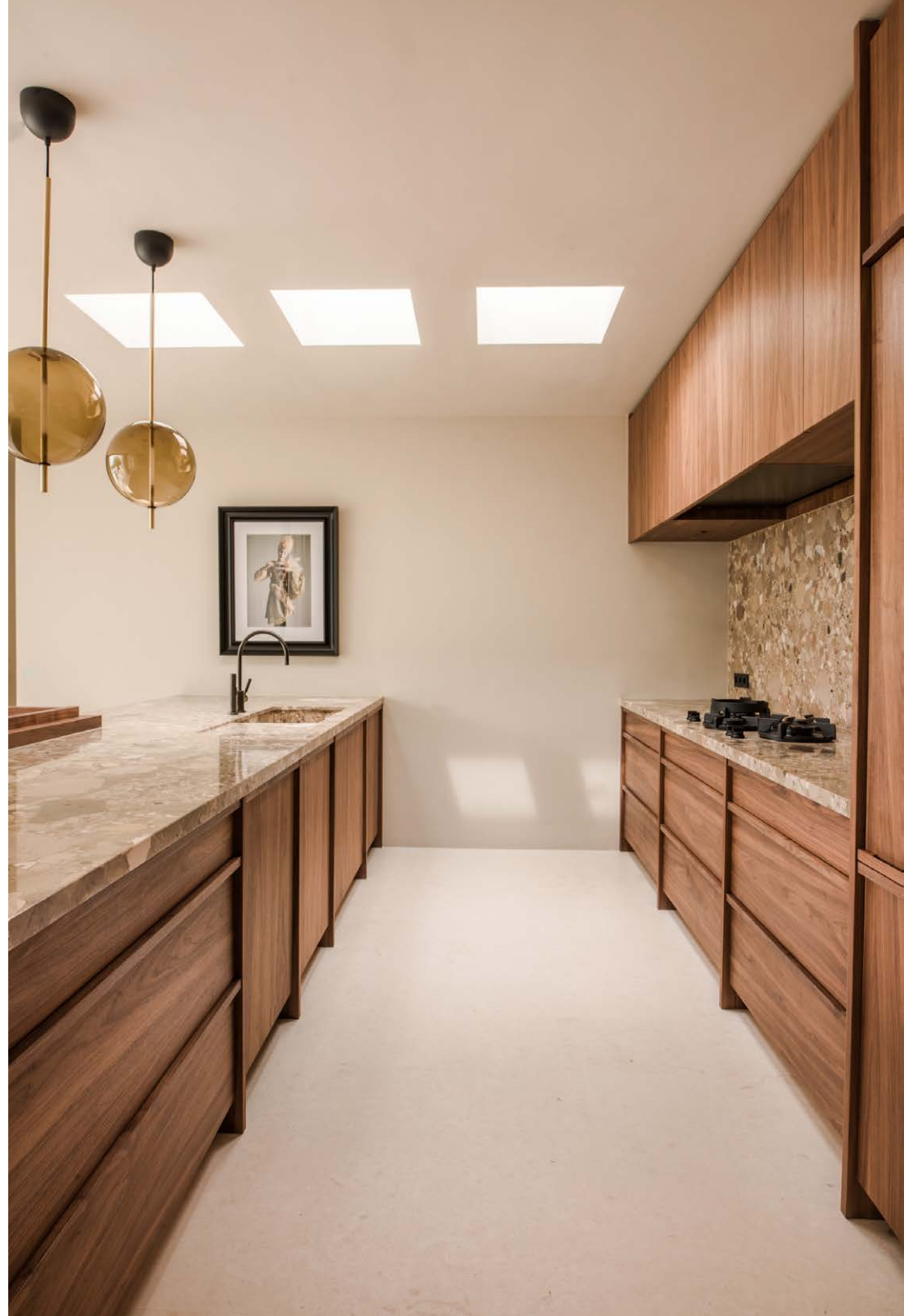
Nested amongst rich pine trees, this forested location belies Can California's enviable proximity between the hotspots of Ibiza Town and Santa Gertrudis; and as is typical of fincas conceived by island design studio Ibiza Interiors, a natural material palette and modern design merge to create a refreshing, peaceful holiday setting.

The patterned wood door makes an artful first impression against the gleaming white walls, so typical of Ibiza's architectural heritage. Beyond, interior spaces are light-filled and stylish. An open-plan plot is delineated between the kitchen, dining room and lounge — each featuring minimalist furniture in neutral tones. At one end, the culinary setting is bold with wooden cabinetry topped by striking marble; at the other, the living area is understated with pale sofas and rattan armchairs. Full-height glazing stretches across the length of the room, creating synergy with the garden beyond.





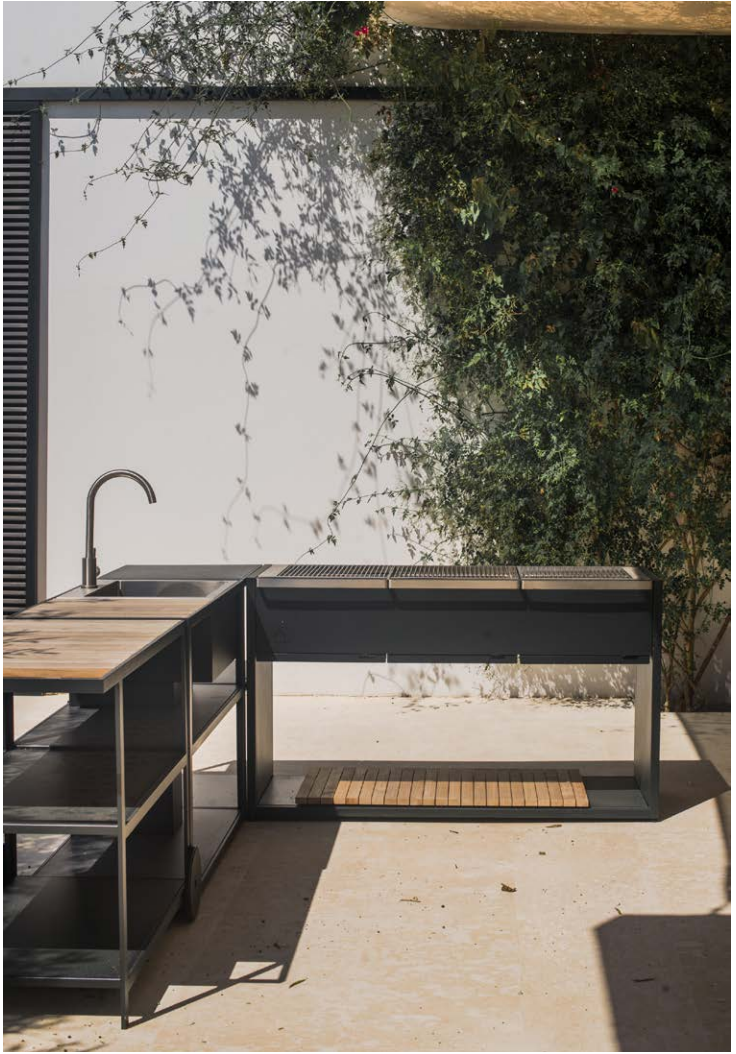




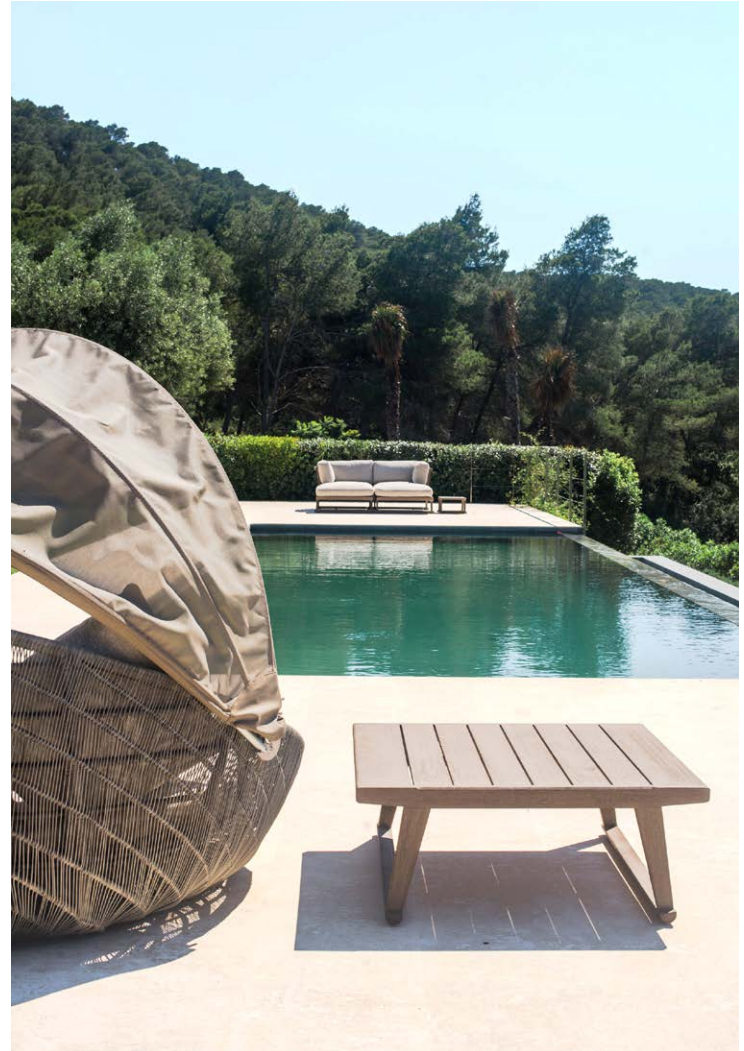












Outside, a covered dining area is complete with a sleek outdoor kitchen including a barbeque and pizza oven, imagined for entertaining. A paved chillout area leads down a set of steps, giving way to an extensive lawn and swimming pool beyond. There's a real sense of privacy, thanks to the rich array of trees and foliage that surround the plot.

All four bedrooms are thoroughly peaceful in atmosphere, with a pared-back colour scheme that lets the smart wooden joinery and calming views take the fore. The bathrooms are refreshing spaces, crafted with skylights and greenscale herringbone tiles — a motif repeated in the outdoor rainfall shower. Wellness comes naturally with Can California's yoga deck and gym equipment.











Property Details

Designed by Ibiza Interiors
Open-plan kitchen and dining room
Outdoor dining terrace
Multiple chillout zones
Four bedrooms
Four bathrooms
Outdoor kitchen
Swimming pool
Outdoor showers
Office space
Yoda deck & gym equipment
Air conditioning throughout

Minimum 31-day booking period



Location

There's rural tranquillity to Can California, located near the vilage of Jesús yet some of Ibiza's most coveted spots are within easy reach. Ibiza Town is a short drive away where gastronomic evenings and upbeat nights of live music await. Explore the wide beaches and crystal-clear waters of Talamanca Bay and Cala Llonga, or head to the heart of the island to uncover Santa Gertrudis' farm-to-fork culinary offerings, artisanal boutiques and 18th century church.

Ibiza Town – 5mins
Santa Gertrudis – 10mins
Cala Llonga – 15mins
Las Salinas – 15mins

Specialising in Ibiza and
London's design-led homes

Let's talk
+34 871 515 302
ibiza@domusnova.com
domusnova.com/ibiza

The property particulars are a guide not statements. Descriptions, photographs, and plans are for guidance and should be checked a prospective purchaser or tenant. The Property is offered "subject to contract". No warranties, representations, or Tenancy is given by Domus Nova. Expenses incurred by a prospective tenant or buyer will not be reimbursed if the Landlord or the Seller withdraws prior to the Tenancy Agreement being signed, dated and exchanged and cleared funds received. Further details of the Disclaimer together with trading names and our Privacy Policy is shown on our website The IVA position relating to the property may change without notice.

View our privacy policy on how your data is processed and used. To find out how we process Personal Data, please refer to our Privacy Statement and other notices at [Privacy Statement](#).

© Domus Nova 2023. All rights reserved.