

DOMUS NOVA



Can Porxet, North East Ibiza - For 12 guests

In partnership with **BARNES**
INTERNATIONAL REALTY



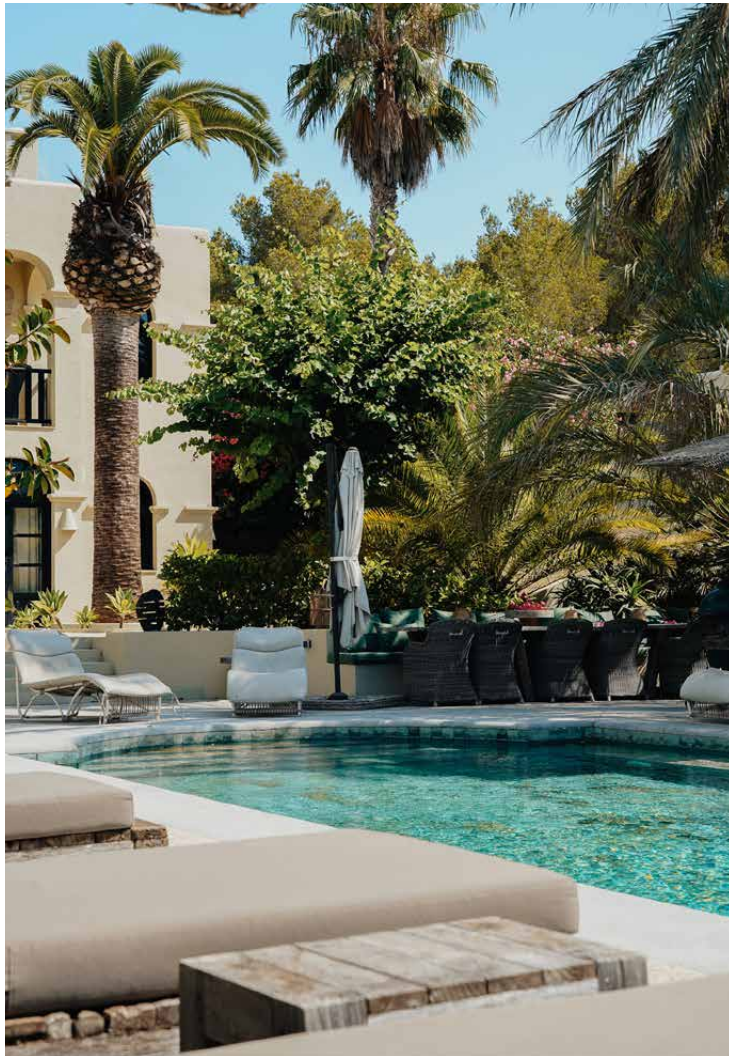
Tucked into Ibiza's verdant east, this six-bedroom villa is all textural charm and set for time spent together.

Rusticity abounds at Can Porxet. Set within lush southeastern hillsides, this six-bedroom villa brings together quintessential Ibicencan architecture and sleek contemporary design. Inside, interiors drawn from nature create an atmosphere of calm; outside, an abundance of terraces are well-attuned to Ibiza's laid-back, convivial way of life.

From the private driveway, a large wooden doorway casts a tranquil feel as you enter. The villa's pale sandy façade is punctuated by sculptural archways, black-framed doors and carefully carved viewpoints – a subtle introduction to the tranquil atmosphere that unfolds beyond. Inside, light is filtered through generous expanses of glazing, illuminating a palette of tactile materials: soft plaster walls, brushed stone floors and rattan finishes bring warmth and depth across the open-plan living spaces.

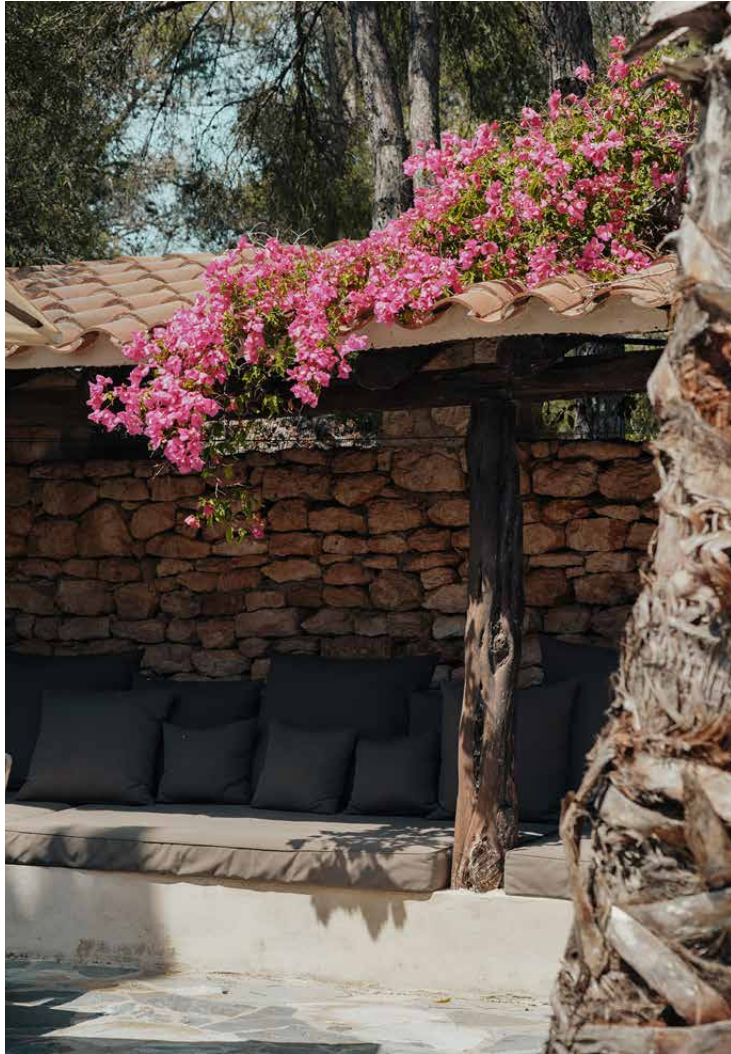
The kitchen carries a welcoming feel, with wood cabinetry and high-tech appliances that are integrated into the scene. Black-framed glass doors slide open seamlessly onto the terrace beyond, dissolving the boundary between indoors and out.















The azure pool forms the soothing centrepiece of the gardens, which are verdant with well-considered tropical plants . A generous sundeck lines the water's edge, dotted with loungers and a relaxed seating area tucked beneath a shaded canopy. Throughout the grounds, stone terraces weave between soaring palm trees, leading from a relaxed barbecue area – complete with banquette seating and rattan chairs – to a more formal dining area, backdropped by stone walls draped in bougainvillea.







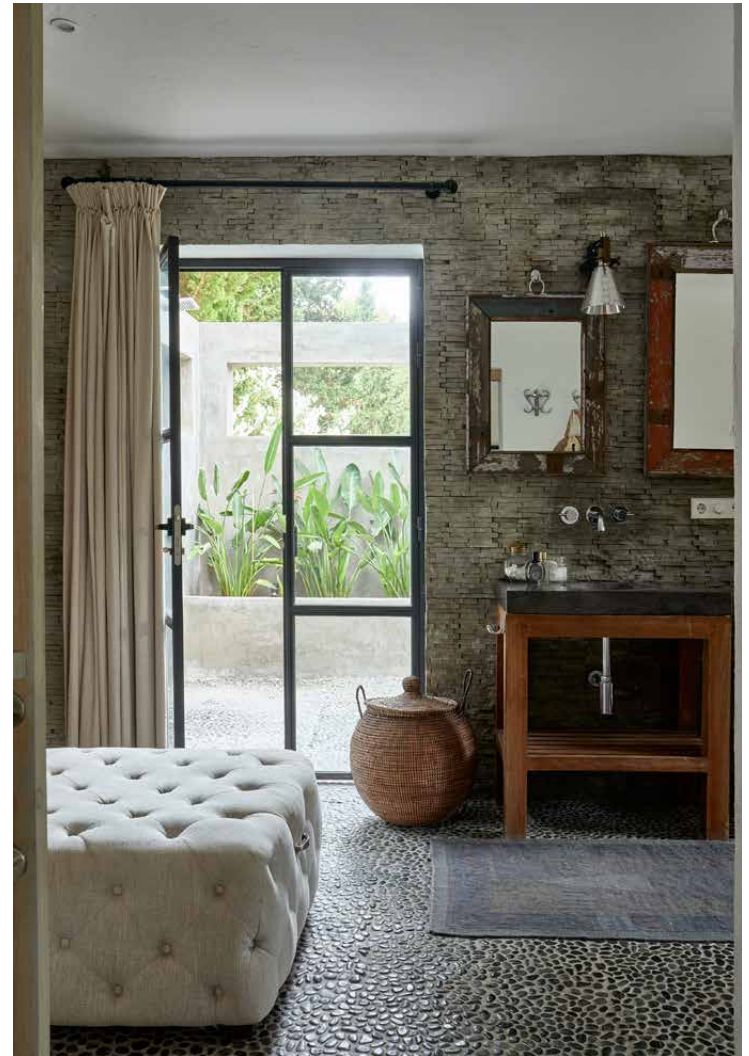




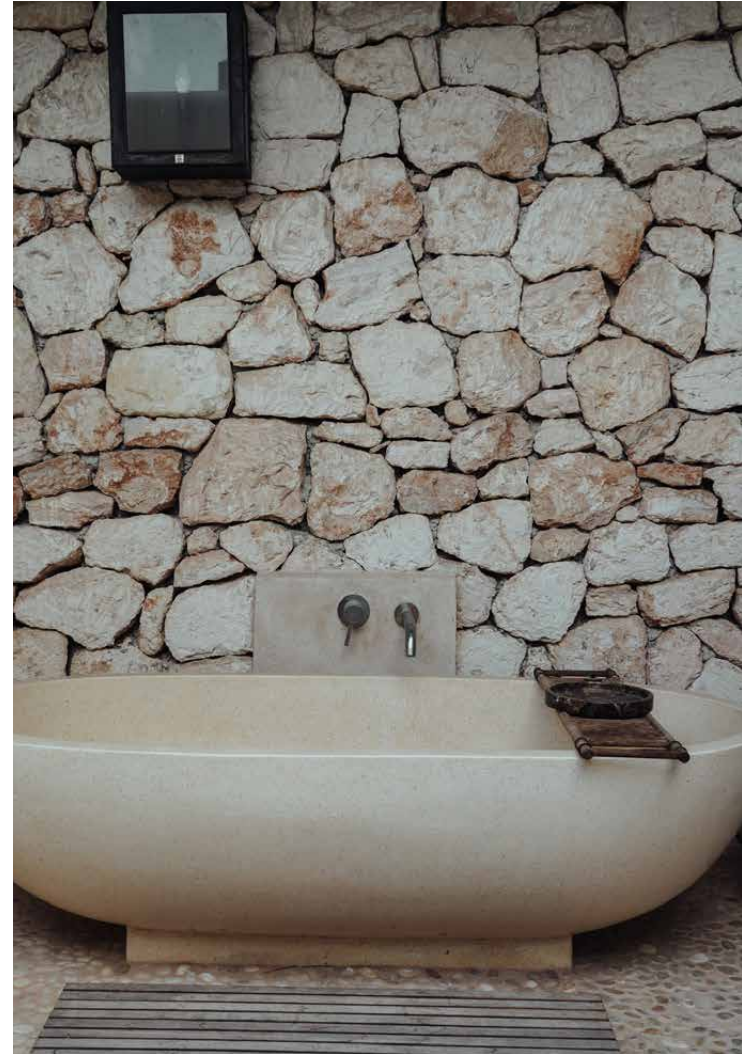
The six bedrooms echo the villa's earthy aesthetic, each space crafted with soft linens, woven textures and a neutral tonal palette. The main house hosts three bedrooms: two located on the ground floor and a serene principal suite upstairs, that enjoys access to a secluded terrace. The annexe provides three additional bedrooms, including a second principal suite and two guest rooms that share a bathroom.

The annexe also enjoys access to two striking outdoor bathrooms – one complete with a freestanding bathtub set among slate-grey stone and open-air views across the surrounding gardens.

















Property Details

6 Bedrooms, 6 Bathrooms
Swimming pool
Multiple lounge areas with hanging chairs
Big Green Egg BBQ
Tropical Gardens
Two al fresco dining areas
Kitchen with high end appliances
3 en-suite bedrooms in the main house
Separate 3-bedroom casita

Tourist License: ETV1534E



Location

Peacefully positioned in Ibiza's verdant eastern countryside, Can Porxet sits within easy reach of some of the island's most characterful towns and picturesque coves. The relaxed coastal hub of Santa Eulalia del Rio is beloved for its palm-lined promenade, elegant marina and vibrant collection of restaurants, galleries and boutiques. For beach days, the golden sands of Cala Llonga Cala Llenya and Cala Mastella offer crystalline swimming spots. From the island's oldest hippie market, Punta Arabi, to the creative inland village of Santa Gertrudis de Fruitera, you're well positioned to make the most of the island at its most bohemian. Golf enthusiasts can tee off at Golf Ibiza, while evenings might call for a wander through the historic streets of Ibiza Town and its UNESCO-listed old quarter, Dalt Vila.

Cala Llonga – 8 minutes

Santa Eulalia – 9 minutes

Ibiza Airport – 20 minutes



Who ——— we are

Forward-thinkers in property, design and culture, we're an estate agency that hits refresh.

Domus Nova was born out of a desire to do things differently; to break the traditional agency model and focus on design-led homes in London and Ibiza, all while delivering the highest levels of personal service.

Our story starts in the nineties when we founded Notting Hill's first boutique agency – and we continue to open the doors to the most remarkable spaces, revealing them to our like-minded community.

We want to help you live better – and believe considered design can do that. That's why we remain committed to building on our legacy, in collaboration with BARNES International, an established agency with a market-leading presence in 22 countries.

Uniting our local insight and curated portfolio with BARNES International's expansive reach, we can facilitate the best opportunities in not only London and Ibiza, but also across Europe, the US and further afield – whether that's a château in the South of France, a penthouse in New York, or a chalet in the Swiss Alps.



DOMUS NOVA

Specialising in London
and Ibiza's design-led homes

Let's talk

+34 871 51 53 02

ibiza@domusnova.com

The property particulars are a guide not statements. Descriptions, photographs, and plans are for guidance and should be checked by a prospective purchaser or tenant. The Property is offered "subject to contract". No warranties, representations, or Tenancy is given by Domus Nova. Expenses incurred by a prospective tenant or buyer will not be reimbursed if the Landlord or the Seller withdraws prior to the Tenancy Agreement being signed, dated and exchanged and cleared funds received. Further details of the Disclaimer together with trading names and our Privacy Policy is shown on our website. The IVA position relating to the property may change without notice.

View our privacy policy on how your data is processed and used. To find out how we process Personal Data, please refer to our Privacy Statement and other notices at [Privacy Statement](#).

© 2025 Domus Nova in partnership with BARNES International. All rights reserved.

In partnership with
BARNES
INTERNATIONAL REALTY