

DOMUS NOVA



Can Casals, San Mateo - €7.900.000

In partnership with **BARNES**
INTERNATIONAL REALTY



There's a sense of time standing still at Can Casals. Originally built in 1800, the outlook has altered little in the intervening centuries: to one side, terraced agricultural fields cascade down the hillside, while all around trees wrap the finca in greenery from every angle.

Inside, the design has evolved without losing sight of its rustic roots. The foundations set the tone: characterful Sabina beams, unevenly textured walls and original wooden doors. Everything has been distilled to its essence: an easy, everyday sequence of rooms designed for slow living.

The living space is both open and intimate, centred around a fireplace and with direct access to the landscape beyond. The convivial kitchen is designed for gathering, whether over long lunches or relaxed evening meals.









Outside, terraces chase both sun and shade. An outdoor kitchen with a wood-fired oven sits alongside a dining area sheltered beneath the trees, while the pool is framed by original stone walls. Above it all, a roof terrace provides a vantage point for uninterrupted views across the countryside to the sea in the distance.

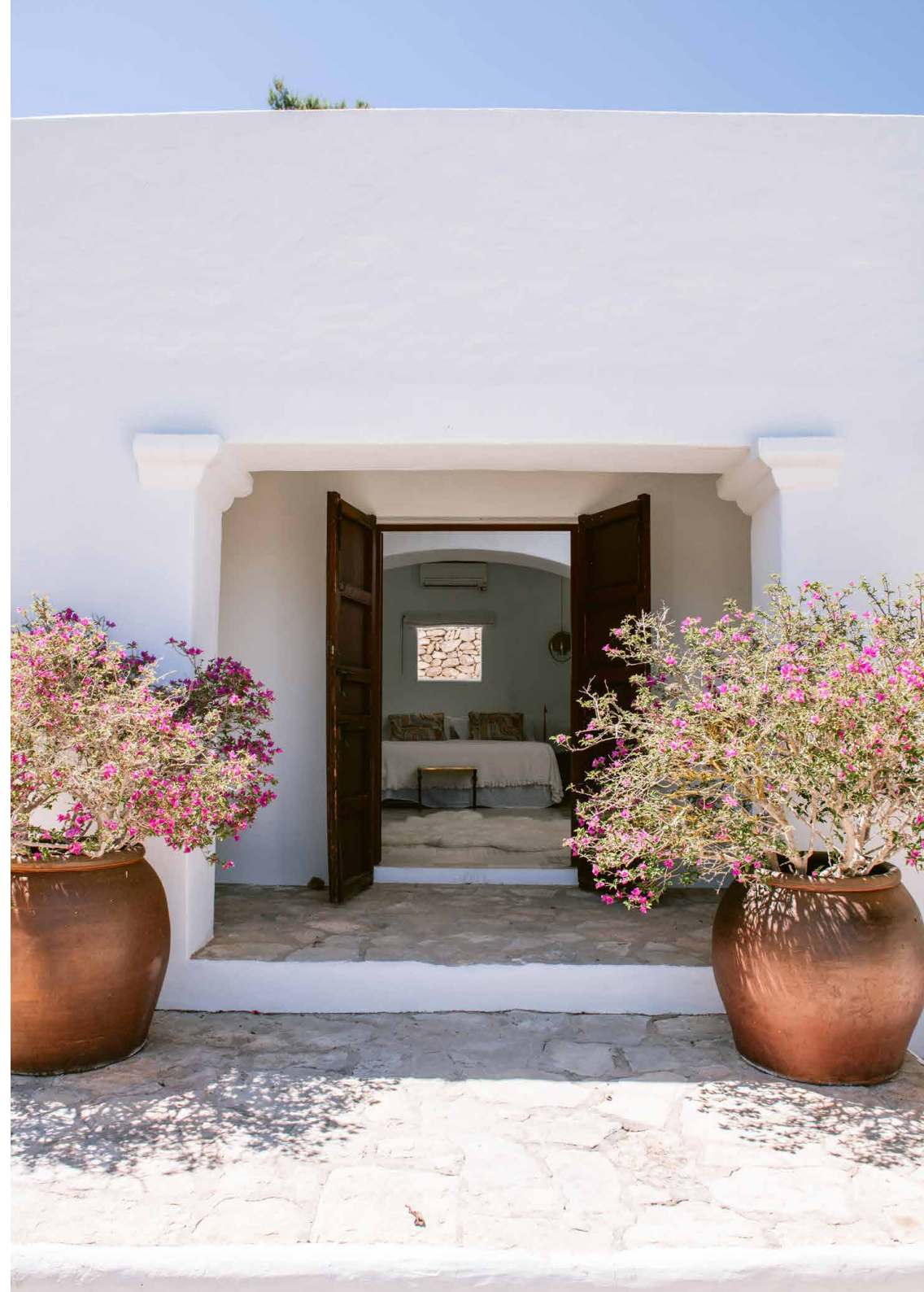








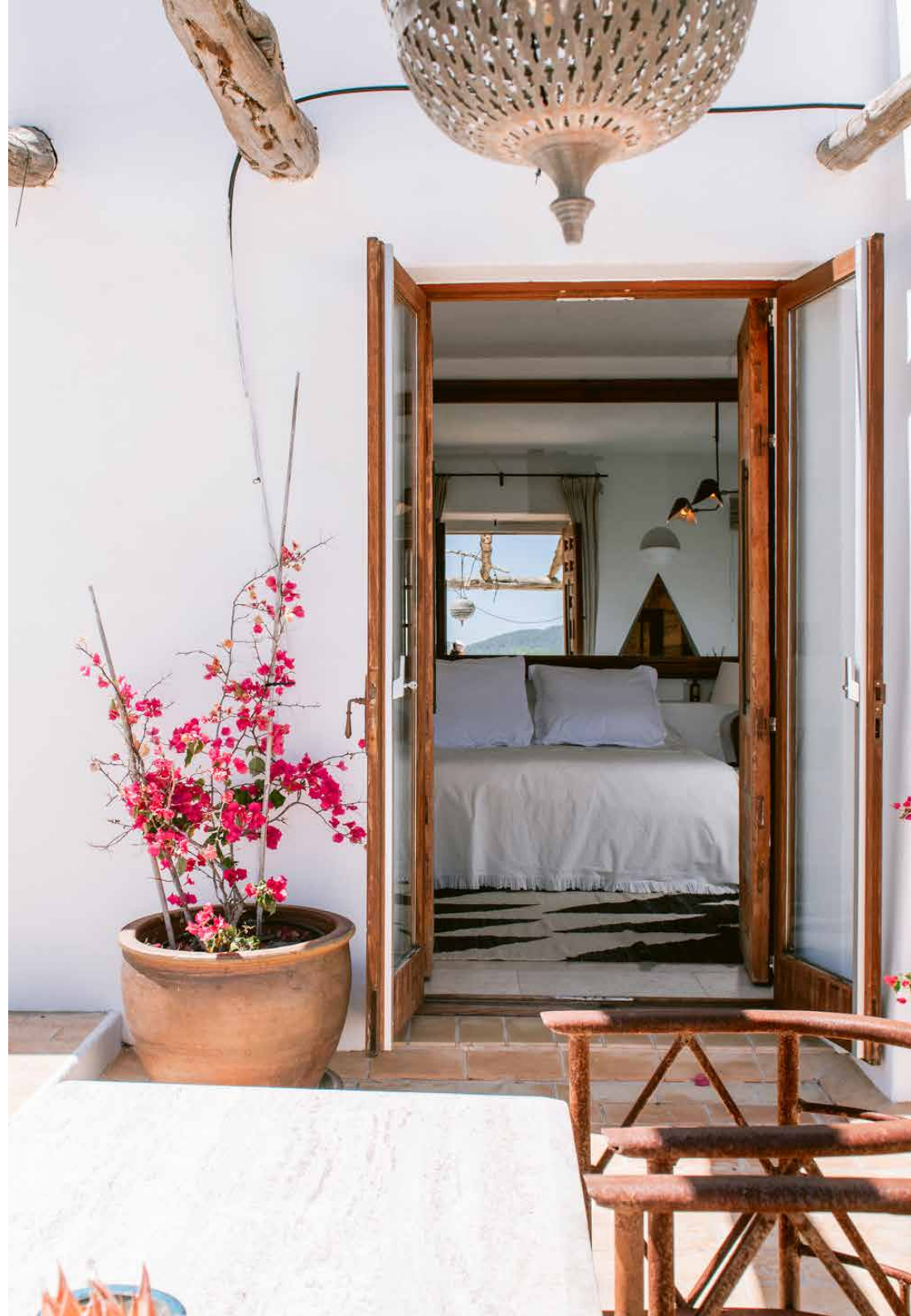
Elsewhere, five bedroom suites are understated, with terracotta-tiled bathrooms and whitewashed walls. Some open directly onto terraces; all frame peaceful views to wake up to. Flexibility is woven into the footprint, with a separate guest or staff casita providing an additional bedroom, bathroom and terrace with independent access.



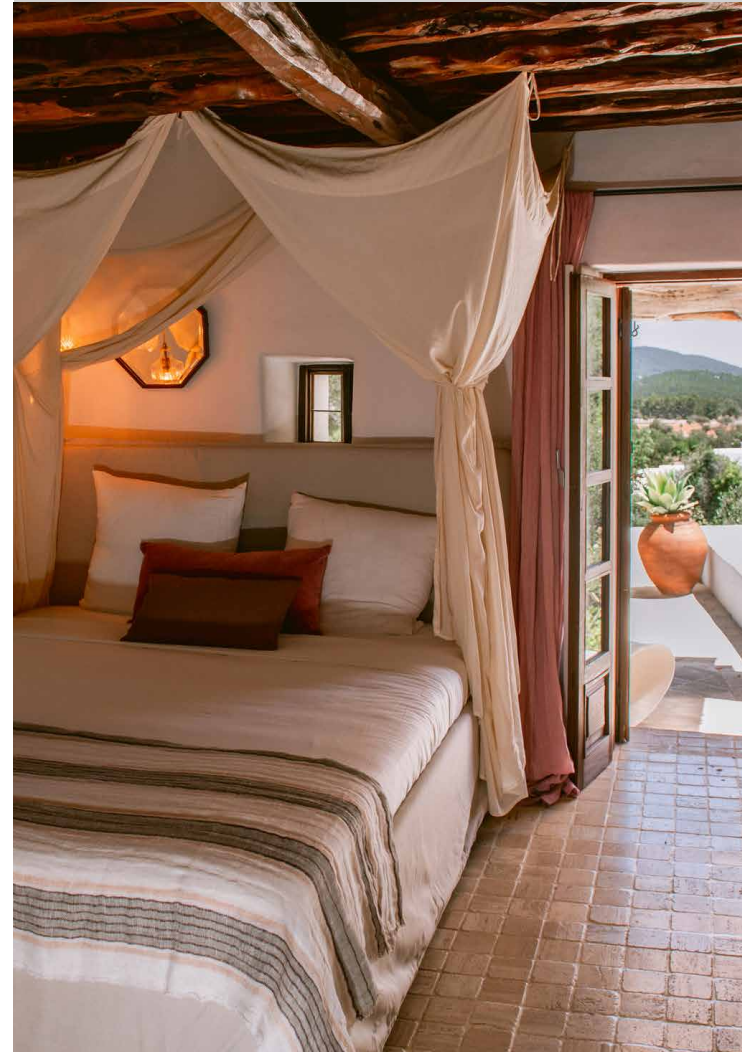












The finca exists in harmony with the landscape too, with solar panels, a private well, a vegetable garden and chicken coop supporting a more self-sufficient way of life. An advanced security system wraps the secluded estate in an additional layer of reassurance.

Wellness is also woven throughout. Dotted around the extensive grounds, a collection of outbuildings tunes into the peace of the setting: a yurt, wooden guesthouse and wellness lodge complete with sauna, outdoor shower and freestanding bathtub, all immersed in nature. Within the main house, a fitness studio provides dedicated space for daily rituals.













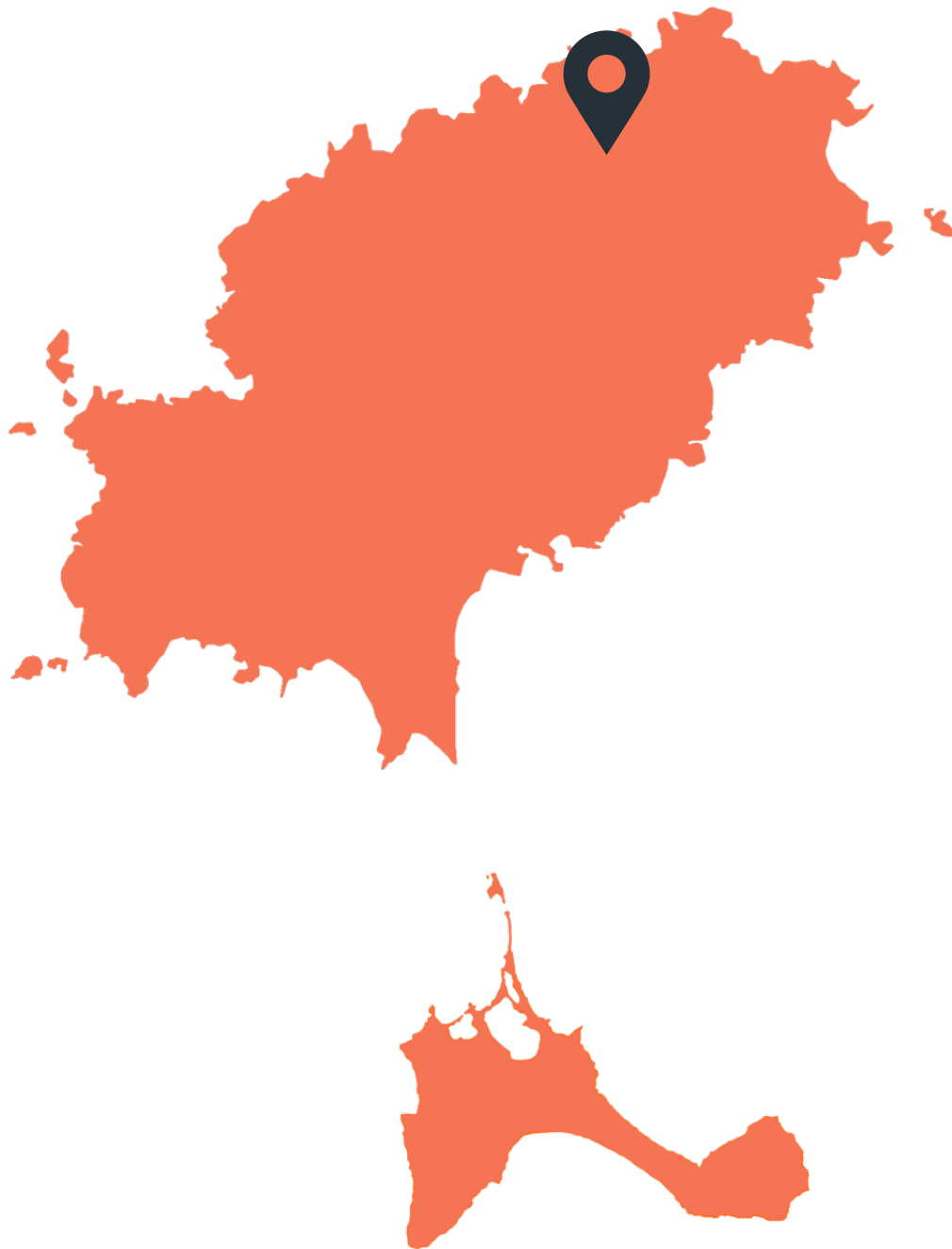


Property Details

- Rural finca set in expansive grounds
- Rustic architecture reimaged for modern living
- Five bedroom suites
- Guest casita with additional bedroom
- Multiple terraces with wide-reaching views
- Dedicated fitness studio
- Wellness lodge with sauna
- Swimming pool
- Children's playground
- Private water well

Build size: 570 sq m

Plot size: 20,000 sq m



Location

Northwest Ibiza takes things slowly. Secluded coves, quiet sunset spots and villages with year-round communities define this corner of the island. Around San Mateo, hiking trails thread through pine forests towards the sea, vineyards stretch across the valleys and every December the village square hosts tastings and traditional music for the local wine festival.

Days unfold at an unhurried pace. Lunch at Juntos House, wander the streets of nearby San Miguel or San Lorenzo, then head to Benirrás as the sun begins to dip. The clear waters of Cala Salada and Cala Saladeta are a short drive away, while Santa Gertrudis sits within easy reach at the island's centre.

Ibiza Airport – 30 mins

Ibiza Town – 25 mins

San Miguel – 8 mins

Santa Gertrudis – 11 mins



Who ——— we are

Forward-thinkers in property, design and culture, we're an estate agency that hits refresh.

Domus Nova was born out of a desire to do things differently; to break the traditional agency model and focus on design-led homes in London and Ibiza, all while delivering the highest levels of personal service.

Our story starts in the nineties when we founded Notting Hill's first boutique agency – and we continue to open the doors to the most remarkable spaces, revealing them to our like-minded community.

We want to help you live better – and believe considered design can do that. That's why we remain committed to building on our legacy, in collaboration with BARNES International, an established agency with a market-leading presence in 22 countries.

Uniting our local insight and curated portfolio with BARNES International's expansive reach, we can facilitate the best opportunities in not only London and Ibiza, but also across Europe, the US and further afield – whether that's a château in the South of France, a penthouse in New York, or a chalet in the Swiss Alps.



DOMUS NOVA

Specialising in London
and Ibiza's design-led homes

Let's talk

+34 871 51 53 02

ibiza@domusnova.com

The property particulars are a guide not statements. Descriptions, photographs, and plans are for guidance and should be checked by a prospective purchaser or tenant. The Property is offered "subject to contract". No warranties, representations, or Tenancy is given by Domus Nova. Expenses incurred by a prospective tenant or buyer will not be reimbursed if the Landlord or the Seller withdraws prior to the Tenancy Agreement being signed, dated and exchanged and cleared funds received. Further details of the Disclaimer together with trading names and our Privacy Policy is shown on our website. The IVA position relating to the property may change without notice.

View our privacy policy on how your data is processed and used. To find out how we process Personal Data, please refer to our Privacy Statement and other notices at [Privacy Statement](#).

© 2025 Domus Nova in partnership with BARNES International. All rights reserved.

In partnership with
BARNES
INTERNATIONAL REALTY