

DOMUS NOVA



Alborada, Santa Eulalia
Prices from €830,000 - €3,520,000



Against the captivating backdrop of Santa Eulalia's marina, these apartments for sale blend contemporary opulence with island charm.

With an enviable vantage point over Santa Eulalia marina, this avant-garde apartment complex takes cues from its waterside setting. Drawn together with undulating design and contemporary interiors, Alborada reimagines island living.

An innovative development of finely crafted living spaces, Alborada residents benefit from access to state-of-the-art amenities and sophisticated communal quarters. At the heart of the complex, a sprawling pool sits enveloped in a garden of native vegetation. Prioritise wellness with the fitness centre's hammam, gym and sauna, or ascend to the rooftop to take a dip in the infinity pool.



Example of Third Floor Private Pool





Example of Third Floor Private Terrace



Example of Living & Kitchen Area





Example of Ground Floor Terrace

Throughout the interiors, a harmonious fusion of modern design and Ibizan character unfolds. Open-plan living spaces are bathed in natural light, with white tiled floors and natural woods. In the principal bedrooms, minimalist design accentuates views from floor-to-ceiling glass that gives way to a private terrace. Situated at the opposite end, en suite bathrooms are arranged to refresh in style, complete with a freestanding bathtub and dual shower.

Outside, most apartments enjoy a peaceful private retreat— a spacious terrace. When you're not soaking up the sun, cool off in the plunge pool, available as an optional extra if not configured in the existing plan.





Example of Principal Bedroom Suite

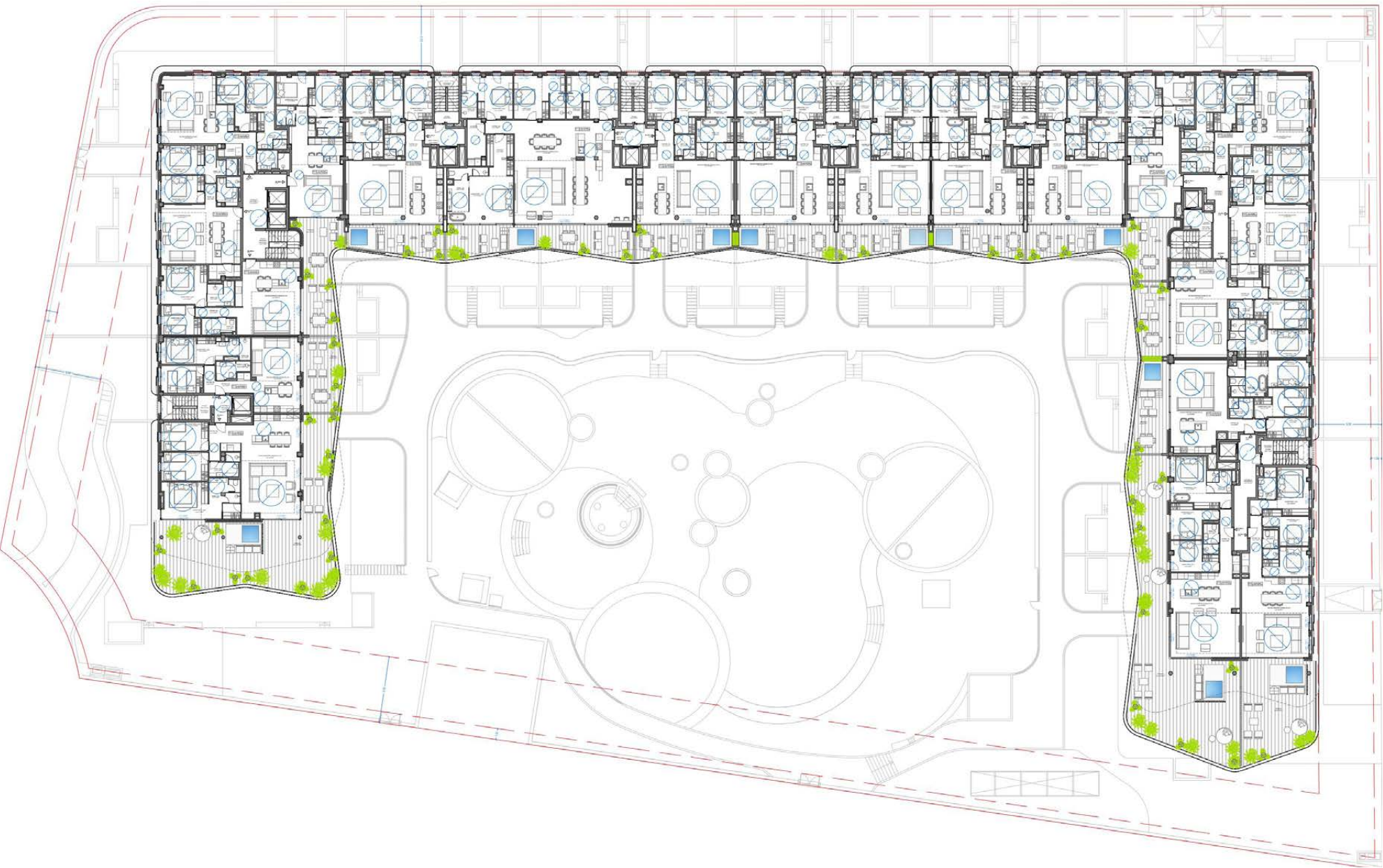


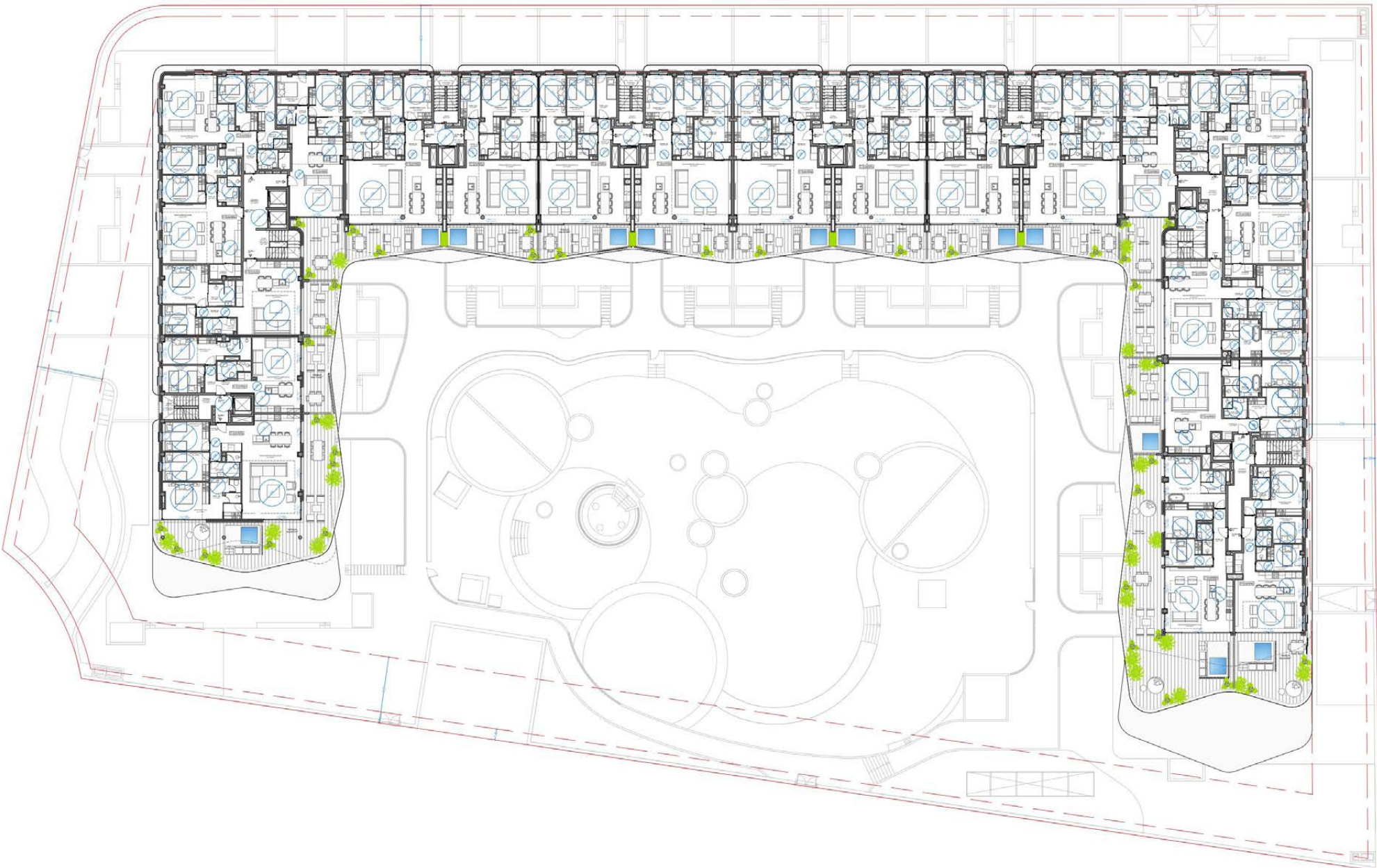






Ground Floor





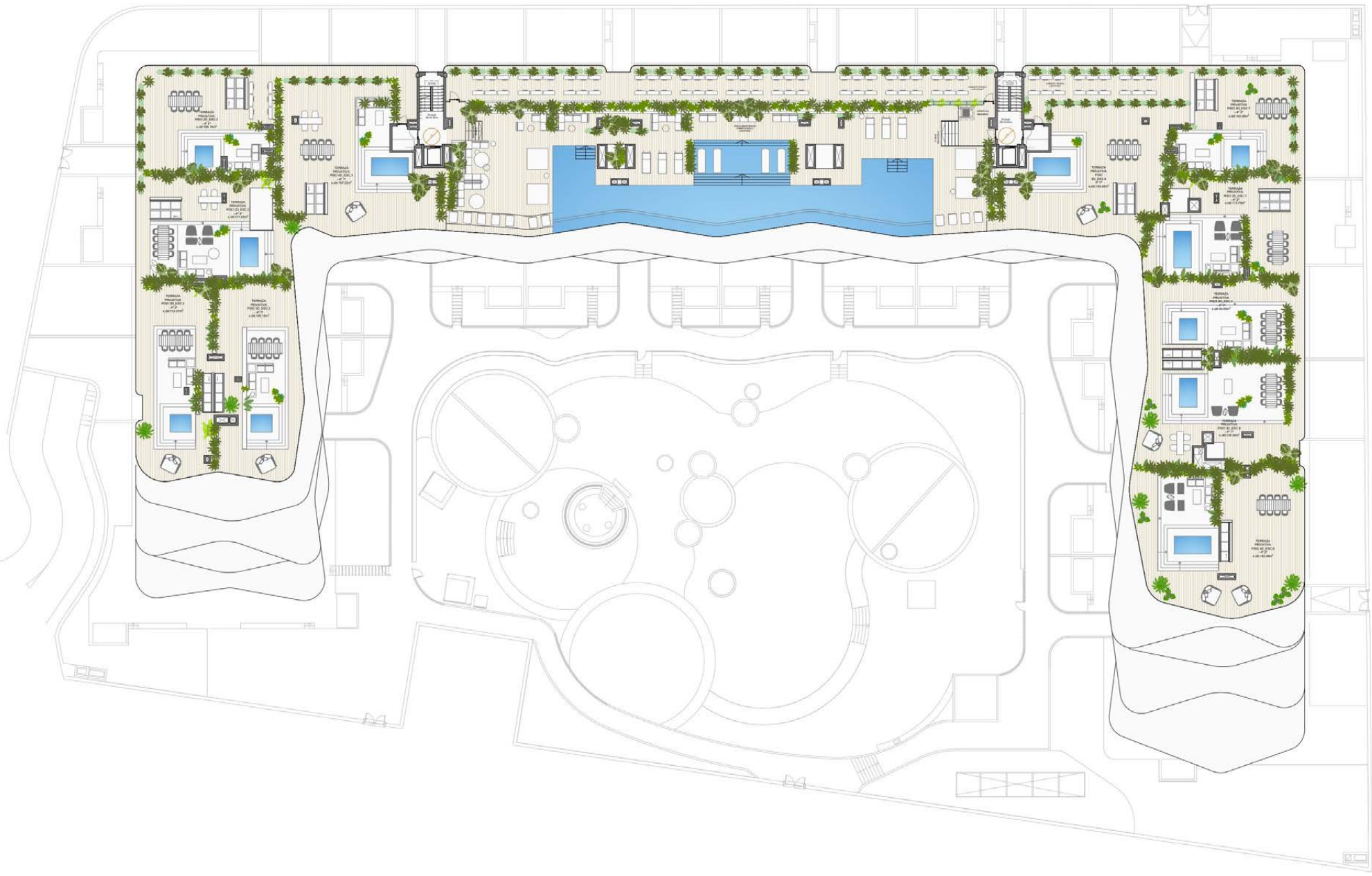
Second Floor



Third Floor

Fourth Floor







Property Details

Open-plan kitchen, dining and reception room

Two to four bedrooms

Private terrace or garden

Communal ground floor and rooftop infinity pools

Sauna, Hamman, gym and changing rooms

Promenade and green areas in front of the residential

Private parking and 24h security

Club house with private bar, social lounge and leisure area

Garden with native vegetation

*CGI's are for illustrative purposes only and do not necessarily represent final specification. Finishes referenced in the description are subject to change.

Similar homes are available in this development. Please get in touch for more details. Price does not include 10% IVA.



Location

A gateway to an authentic, slower pace of life, and a year-round community. Though Santa Eulalia's vibe remains refreshingly laid-back, world-class restaurants, art galleries and shops are in plentiful supply here. Stroll along the palm-lined promenade and yacht marina, stopping for seafood with a waterfront view. Peruse the hippy markets at Es Canar or catch the sunrise from the wide sandy shores of Cala Llonga. On higher energy evenings, it's just 15 minutes to reach Ibiza Town.

Specialising in Ibiza and
London's design-led homes

Let's talk
+34 871 515 302
ibiza@domusnova.com
domusnova.com/ibiza

The property particulars are a guide not statements. Descriptions, photographs, and plans are for guidance and should be checked a prospective purchaser or tenant. The Property is offered "subject to contract". No warranties, representations, or Tenancy is given by Domus Nova. Expenses incurred by a prospective tenant or buyer will not be reimbursed if the Landlord or the Seller withdraws prior to the Tenancy Agreement being signed, dated and exchanged and cleared funds received. Further details of the Disclaimer together with trading names and our Privacy Policy is shown on our website The IVA position relating to the property may change without notice.

View our privacy policy on how your data is processed and used. To find out how we process Personal Data, please refer to our Privacy Statement and other notices at [Privacy Statement](#).