

DOMUS NOVA



Holland Park Road W14

£4,850,000



Just a stone's throw from Holland Park, this three-bedroom maisonette for sale brings contemporary loft-style living to a heritage framework.

Set within a red-brick building dating to the late 1800s, this Grade II listed maisonette marries sprawling heritage proportions with contemporary interiors.

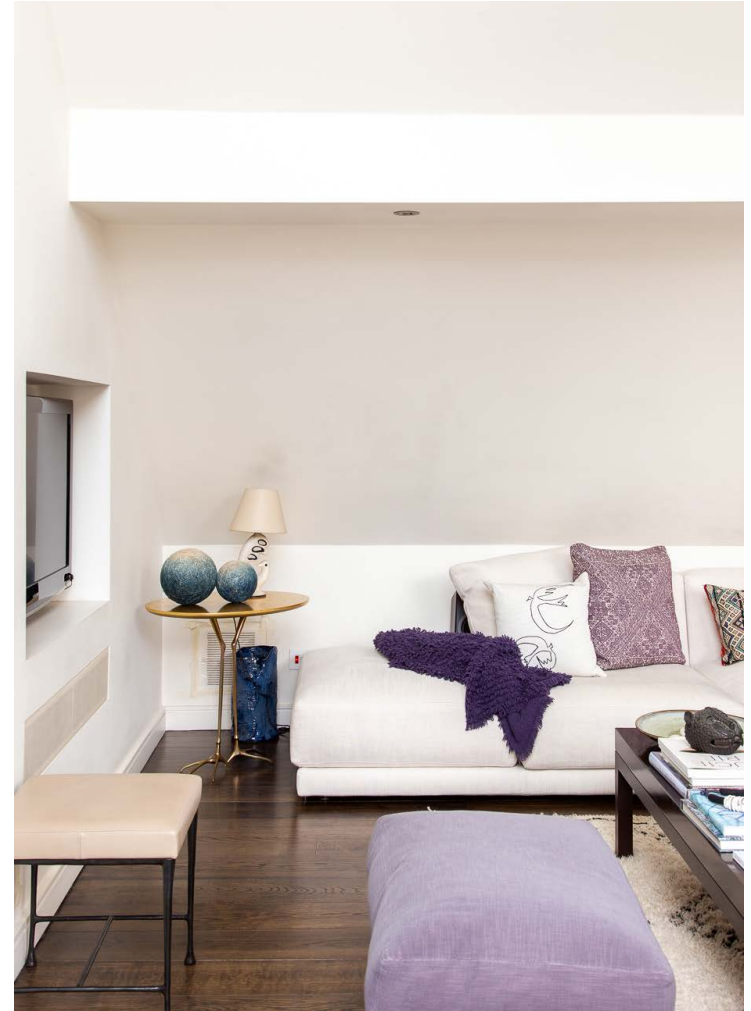
Nestled beneath a gauged archway, a private entrance leads up to the first floor, where an inverted layout places three spacious bedrooms. Through to a showpiece principal bedroom suite, a subdued palette of pastel green pops, punctuated with natural light. Expansive spaces to sleep, bathe and dress are seamlessly blended – endless storage provided courtesy of a generous walk-in wardrobe, plus bespoke fitted closets. Marked by sandy tones, a soothing en suite bathroom features a freestanding bathtub, dual vanity and a marble-wrapped shower. Dark wooden flooring extends through two further bedrooms, each styled in neutral hues enhanced with natural light. Serving these bedrooms – a shower room in calming tones and textures.











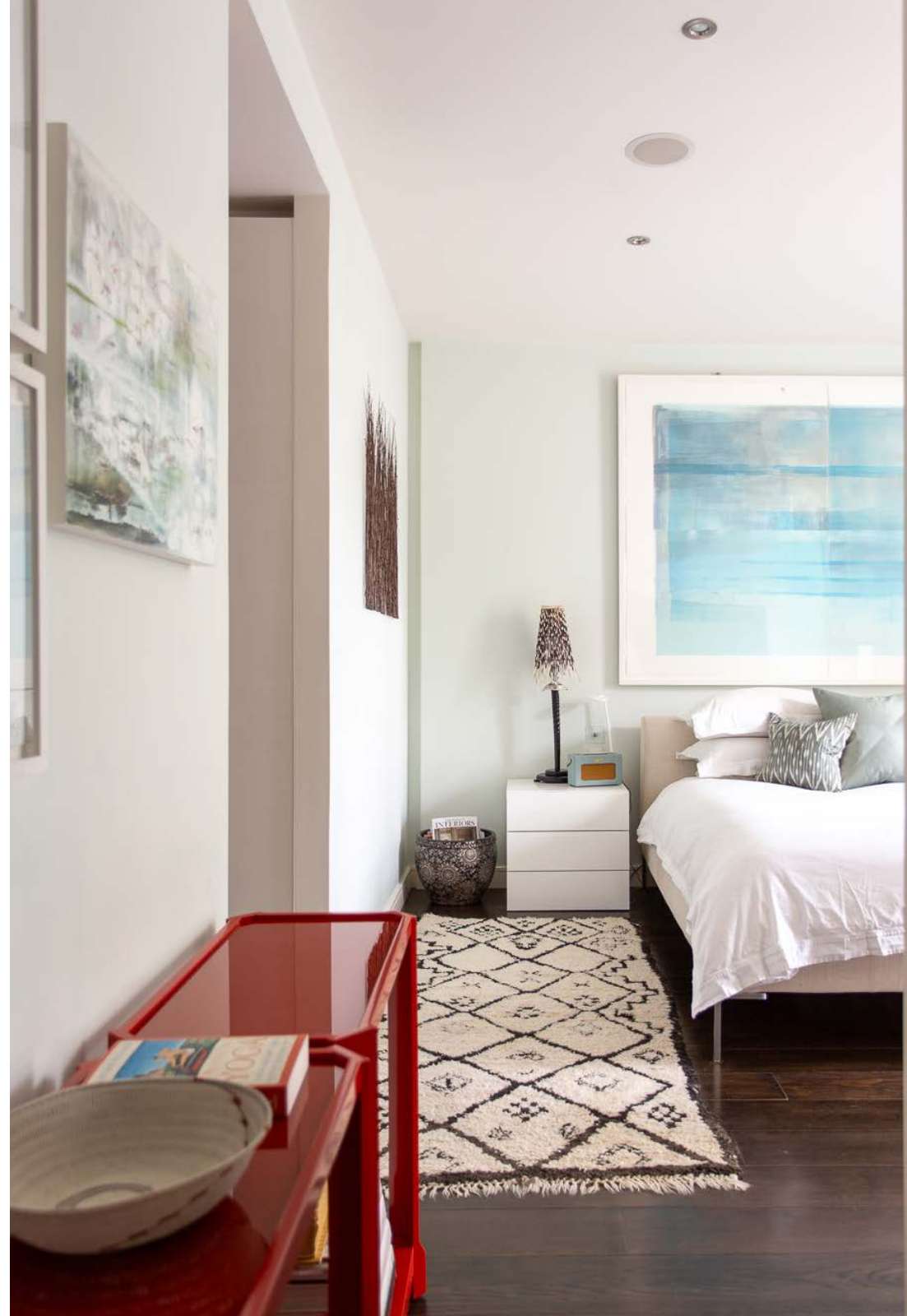




A striking suspended stairway guides up to the second floor, where a voluminous open-plan living space unfolds. Dark wooden flooring sweeps through its sprawling expanse, uplifted by a soaring vaulted ceiling.

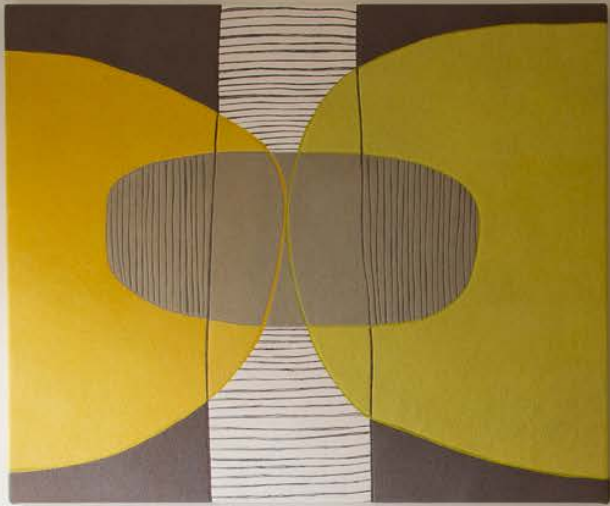
An array of skylights bring life to areas for lounging and dining, complete with a recessed feature fireplace.

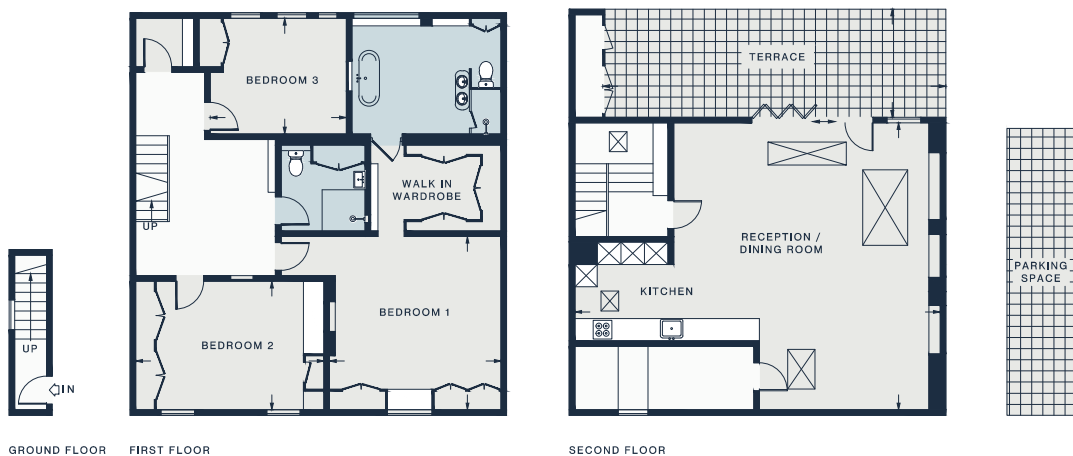
Placed neatly into the rear of the room, light filters down through a sleek contemporary kitchen designed by Bulthaup, with integrated Gaggenau appliances. The home's pièce de résistance, glass doors form a natural extension out to a picturesque decked terrace.











Property Details

Open-plan kitchen, dining and reception room
Principal bedroom suite
Two further bedrooms
Shower room
Roof terrace
Royal Borough of Kensington & Chelsea

Approx. 1,982 sq ft / 184.1 sq m
EPC - E
Council tax - G
Freehold

RECEPTION / DINING
32'2 x 25'4 (9.8m x 7.7m)

BEDROOM 2
16'5 x 11'5 (5.0m x 3.4m)

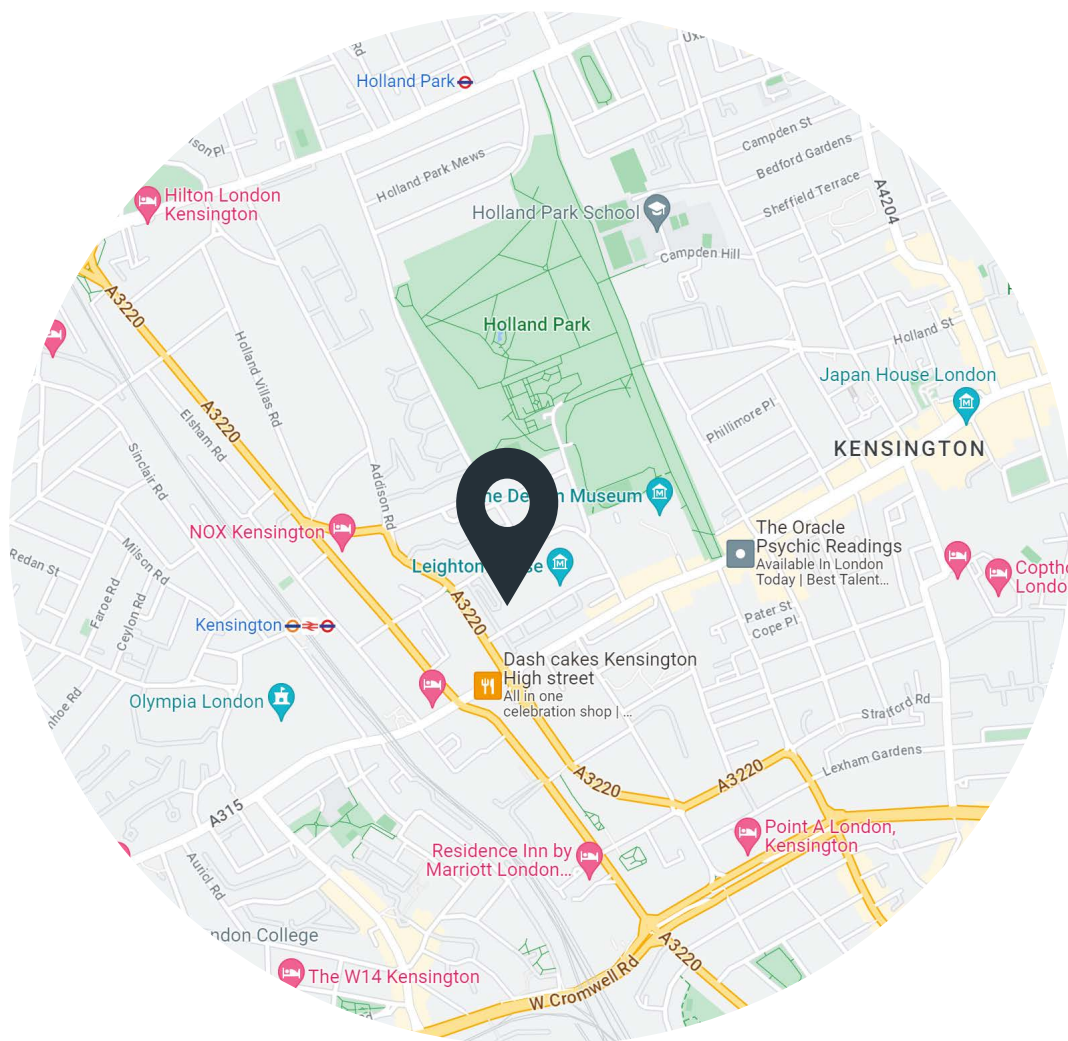
BEDROOM 1
15'3 x 14'11 (4.6m x 4.5m)

TERRACE
32'1 x 9'6 (9.7m x 2.9m)

BEDROOM 3
11'10 x 10'0 (3.6m x 3.0m)

Approx. Gross Internal Area = 2050 sq ft / 190.5 sq m

Floor plans are for illustrative purposes only and not to scale. Compliant with RICS code of measuring practice.



Location

Sit on a peaceful picturesque street, Holland Park Road puts you in prime position for exploring west London. Head around the corner to grab a morning coffee from Gail's, then wander the expanse of stores on Kensington High Street. Less than five minutes' walk away, Holland Park and its tranquil Kyoto Garden are your go to for leisurely afternoon strolls. Stop by Belvedere for a taste of South Italy with a Tuscan setting. Just further north, the antique stalls and vintage treasures of Portobello Road are an ideal Saturday outing.

Kensington – 7 mins (District, Overground, Southern)
High Street Kensington – 12 mins (Circle, District)

Specialising in London
and Ibiza's design-led homes

Let's talk
020 7221 7817
sales@domusnova.com
domusnova.com

The particulars above are a guide, not an offer or contract. Descriptions, photographs and plans are not statements or representations of fact. Measurements are approximate and not to scale. Prospective purchasers must verify the accuracy of the information within the particulars. Domus Nova does not give any representations or warranties, nor represent the Seller legally. Domus Nova has no liability, for any costs, losses or expenses incurred by the Seller or a prospective buyer relating to the sales and buying transaction.

Our Sales Disclaimer, trading names and privacy policy on how your data is processed and used is found in full on our website in our [Privacy Statement](#).

© Domus Nova 2023. All rights reserved.