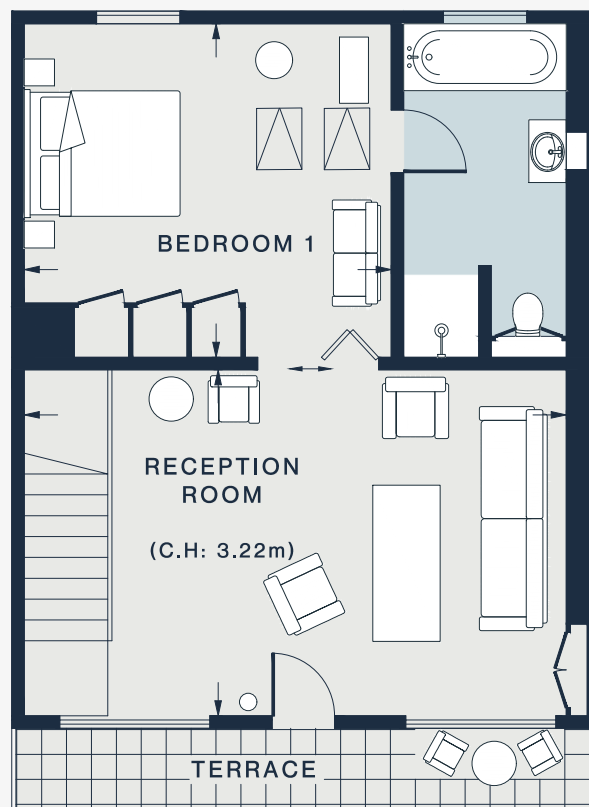


GROUND FLOOR



FIRST FLOOR

RECEPTION/DINING ROOM /KITCHEN

21'10 x 20'8 (6.6m x 6.2m)

RECEPTION ROOM

21'4 x 13'8 (6.4m x 4.1m)

BEDROOM 1

14'5 x 13'1 (4.3m x 4.0m)

BEDROOM 2

11'3 x 9'7 (3.4m x 2.9m)

Approx. Gross Internal Area = 1,257 sq ft / 116.8 sq m  
Outbuilding = 5 sq ft / 0.5 sq m  
Total = 1,262 sq ft / 117.3 sq m