

DOMUS NOVA

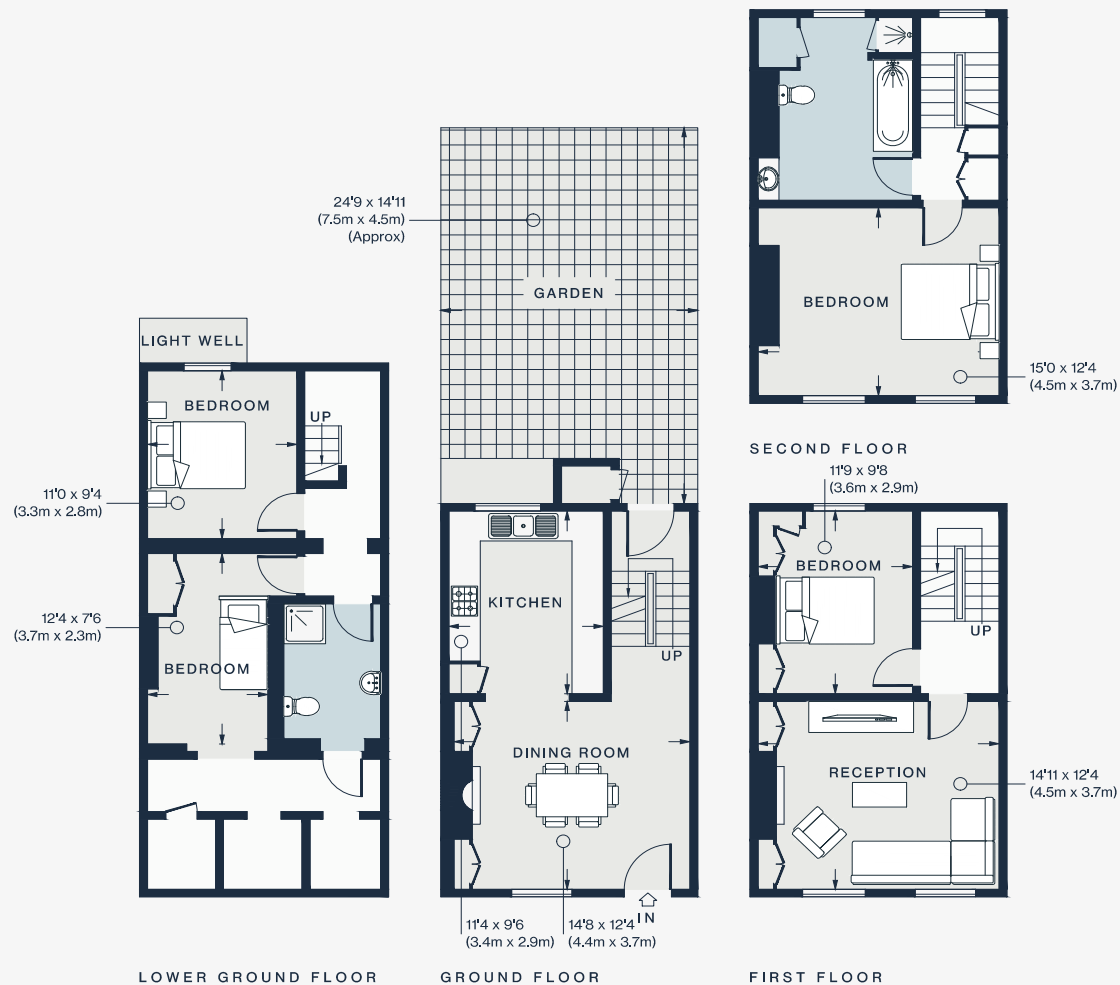


Hillgate Street

Kensington

APPROXIMATE GROSS INTERNAL AREA

1,576 sq ft / 146.4 sq m



Approx. Gross Internal Area = 1,576 sq ft / 146.4 sq m

Floor plans are for illustrative purposes only and not to scale. Compliant with RICS code of measuring practice. Furniture layouts are indicative only. This property may be furnished, part-furnished or unfurnished. Please refer to your agent for details.