

DOMUS NOVA



Hillgate Street W8
£1,730 pw - Long let



A brightly painted four-bedroom townhouse set in Notting Hill's photogenic Hillgate Village. A joyful exterior sets the scene for calming interiors.

Sitting harmoniously among its pastel-toned neighbours, Hillgate Street's peachy-pink façade is hard to miss. Step inside, however, and the colour palette takes a more neutral turn. Arranged over four floors, understated backdrops create a blank canvas for everyday life.

On entry, you'll be greeted by a dining room and kitchen, plus a sightline to the walled garden. White walls and high ceilings accentuate the feeling of openness. A fireplace adds an elegant focal point, flanked by bespoke alcove shelving that maximises the space available. Through an opening, the kitchen is finished with cream units and brown granite worksurfaces that wrap around the horseshoe-shaped room. Integrated Neff appliances have been positioned to make the culinary domain as ergonomic as possible. When the weather obliges, dine al fresco in the generous south-west facing patio garden.





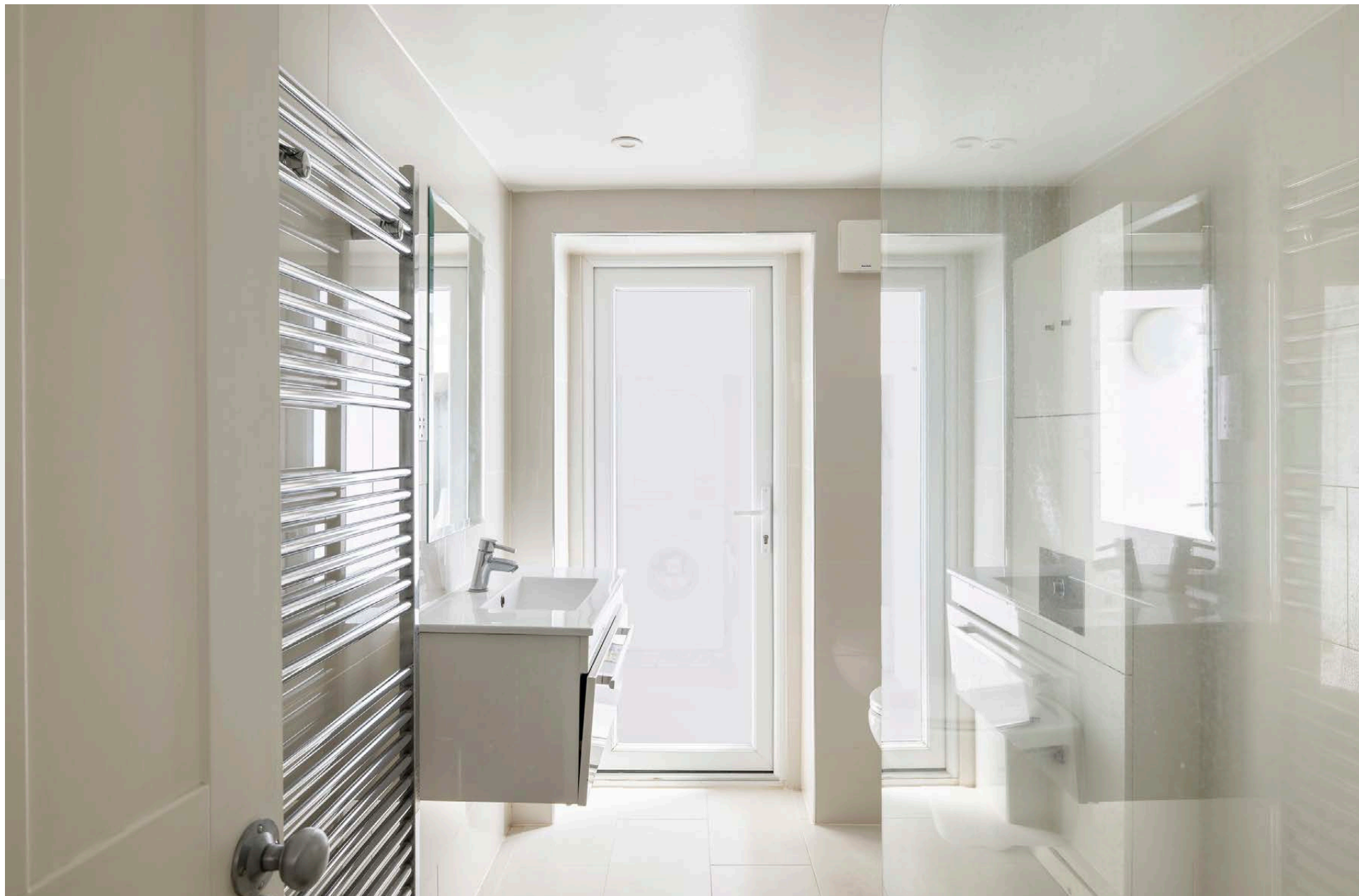




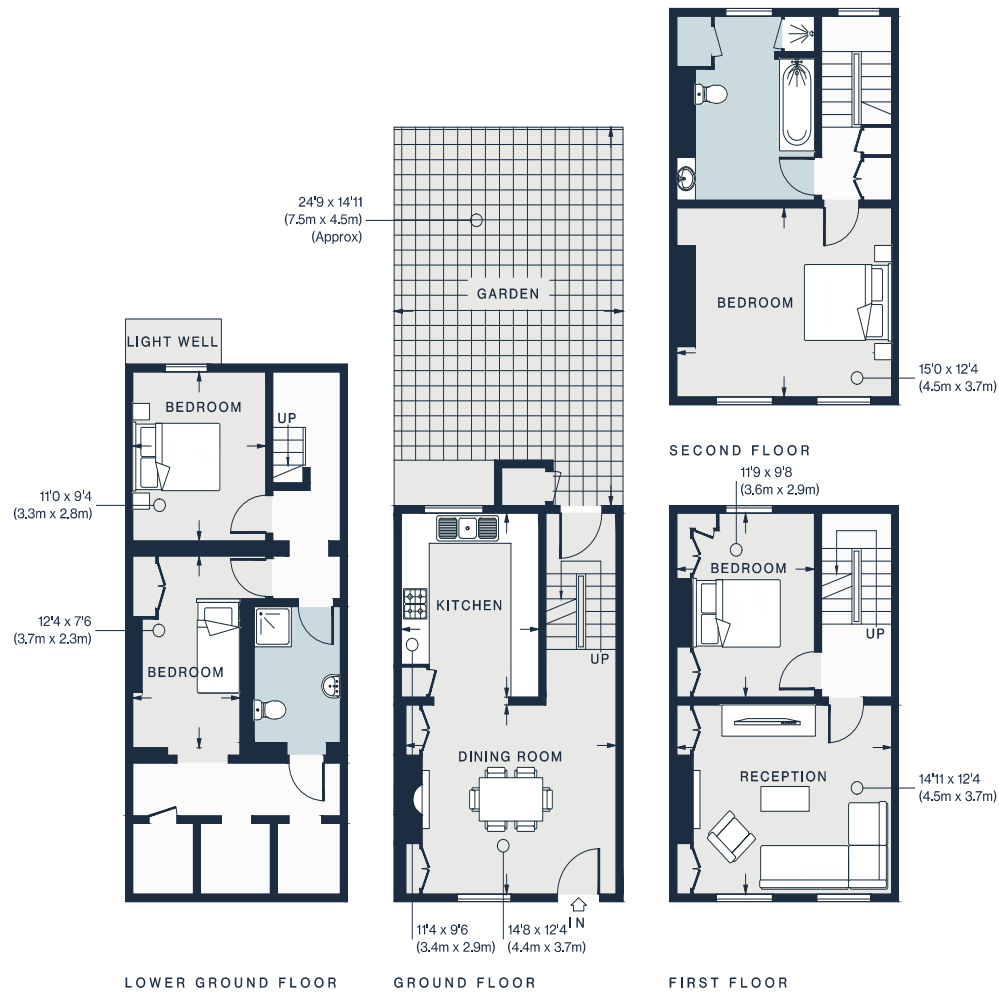
On the first floor, the reception room makes the most of its vantage point over Hillgate Street. A marble fireplace and carpeted floors add to the inviting atmosphere, while dual sash windows ensure a steady stream of natural light. Also on this floor, a guest bedroom is similarly bright and airy.

The principal bedroom is found on the second floor. Calming neutrals and convenient fitted storage keep the space streamlined. Next door, the family bathroom pairs white walls with bottle green tiles to striking effect. Take your pick between the wood panelled bathtub and walk-in shower. Two further bedrooms and a shower room await on the lower ground floor, ideal for visiting guests.









Property Details

Open-plan dining room and kitchen
Separate reception room
Principal bedroom
Three further bedrooms
Two bathrooms
Patio garden
Royal Borough of Kensington & Chelsea

Approx 1,576 sq ft / 146.4 sq m
Council Tax Band - H
EPC - E
Deposit Payable - £10,380

Approx. Gross Internal Area = 1,576 sq ft / 146.4 sq m

Floor plans are for illustrative purposes only and not to scale. Compliant with RICS code of measuring practice.
Furniture layouts are indicative only. This property may be furnished, part-furnished or unfurnished. Please refer to your agent for details.



Location

There's more to the charming enclave of Highgate Village than its rows of colourful Victorian terraces. A curated selection of local businesses lends a real neighbourhood feel. Sitting between two renowned Greek restaurants – Mazi and Suzi Tros – you'll be spoilt for choice when it comes to dining out. For a morning caffeine hit, there's Kuro Coffee just around the corner. Come evening, catch a film at the Gate Picturehouse followed by a drink at The Hillgate and be home in seconds. Also within strolling distance, the market stalls of Portobello Road and the green expanses of Kensington Gardens.

Notting Hill Gate - 2 mins

Specialising in London
and Ibiza's design-led homes

Let's talk
020 7727 1717
lettings@domusnova.com
domusnova.com

The property particulars are a guide not statements. Descriptions, photographs, and plans are for guidance and should be checked by the prospective tenant. The Property is offered "subject to contract and references". No warranties, representations, or Tenancy is given by Domus Nova. Expenses incurred by a prospective tenant will not be reimbursed if the Landlord withdraws prior to the Tenancy Agreement being signed, dated and exchanged and cleared funds received. Furniture and other items shown in a property at viewing may belong to a current tenant. The prospective tenant should verify in writing which fixtures and fittings forms part of the Tenancy. Our full lettings disclaimer together with trading names and our [Privacy Policy](#) is shown on our website