

DOMUS NOVA

Highlever Road

North Kensington W10

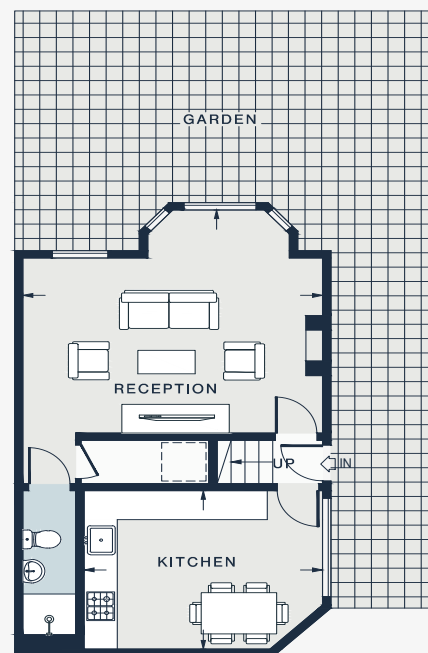
APPROXIMATE GROSS INTERNAL AREA

1,480 sq ft / 137.5 sq m

020 7221 7817

domusnova.com

LONDON | IBIZA



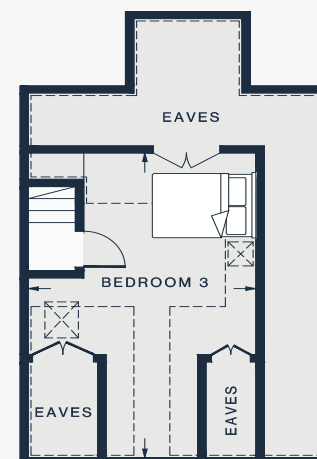
GROUND FLOOR

RECEPTION

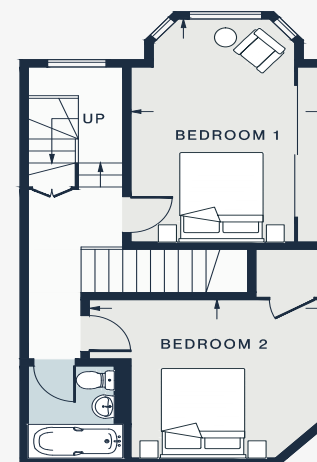
17'7 x 15'4 (5.4m x 4.7m)

KITCHEN

14'21 x 10'10 (4.3m x 3.3m)



SECOND FLOOR



FIRST FLOOR

BEDROOM 1

15'6 x 11'8 (4.7m x 3.6m)

BEDROOM 2

14'3 x 10'11 (4.3m x 3.3m)

BEDROOM 3

20'10 x 13'6 (6.3m x 4.1m)

Approx. Gross Internal Area = 1480 sq ft / 137.5 sq m

Floor plans are for illustrative purposes only and not to scale. Compliant with RICS code of measuring practice.