

DOMUS NOVA

Highgate Road

Kentish Town

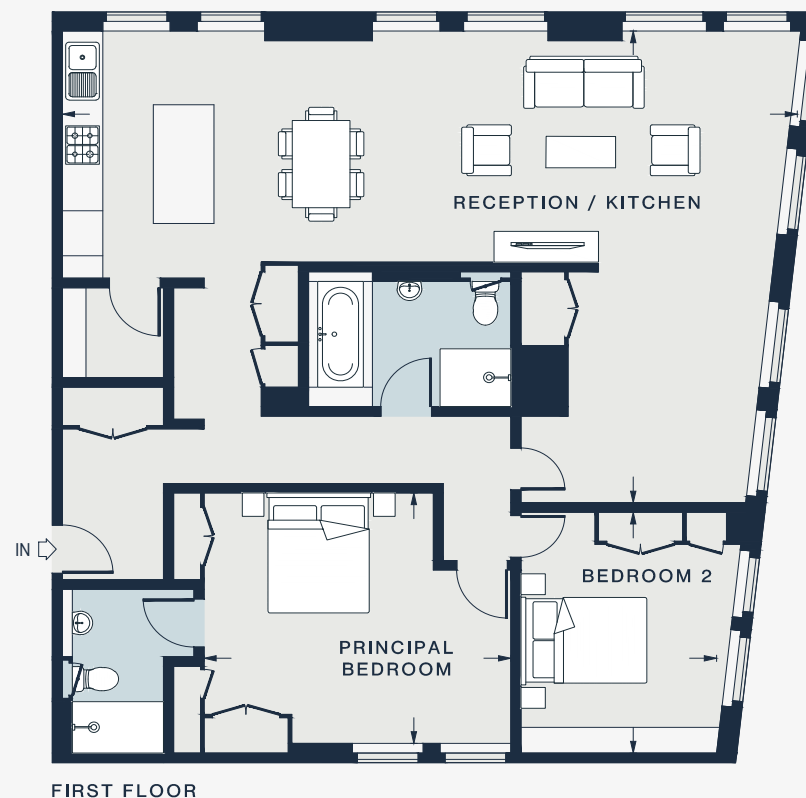
APPROXIMATE GROSS INTERNAL AREA

1,278 q ft / 118.7 sq m

020 7727 1717

domusnova.com

LONDON | IBIZA



RECEPTION / KITCHEN
36'5 x 24'2 (11.1m x 7.4m)

PRINCIPAL BEDROOM
15'0 x 13'4 (4.6m x 4.1m)

BEDROOM
12'4 x 9'6 (3.8m x 2.9m)

Approx. Gross Internal Area = 1,278 sq ft / 118.7 sq m

Floor plans are for illustrative purposes only and not to scale. Compliant with RICS code of measuring practice. Furniture layouts are indicative only. This property may be furnished, part-furnished or unfurnished. Please refer to your agent for details.