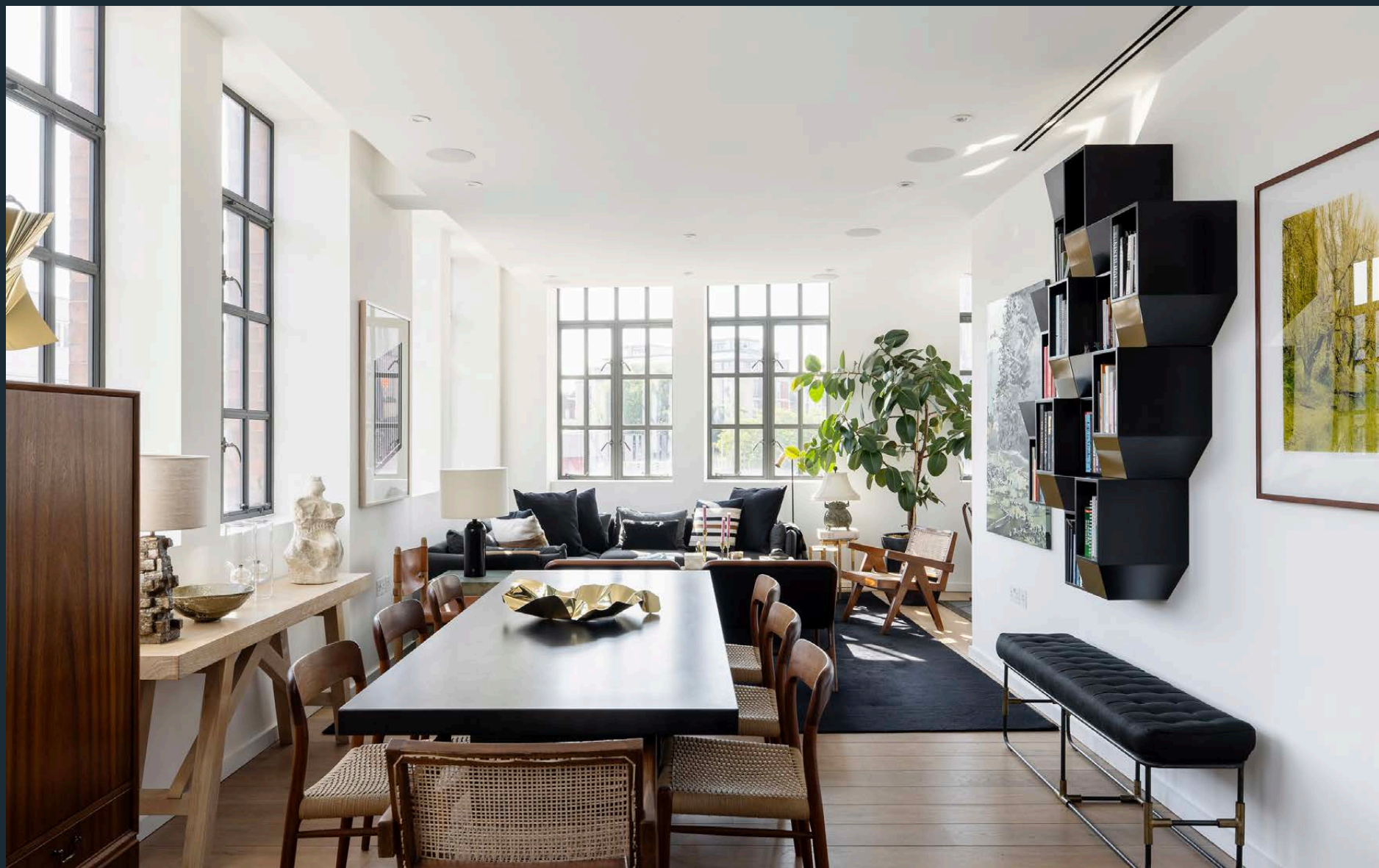


DOMUS NOVA



Highgate Road NW5

£1,425,000



A distinguished two-bedroom apartment for sale in Kentish Town. This considered home epitomises light-filled, lateral living.

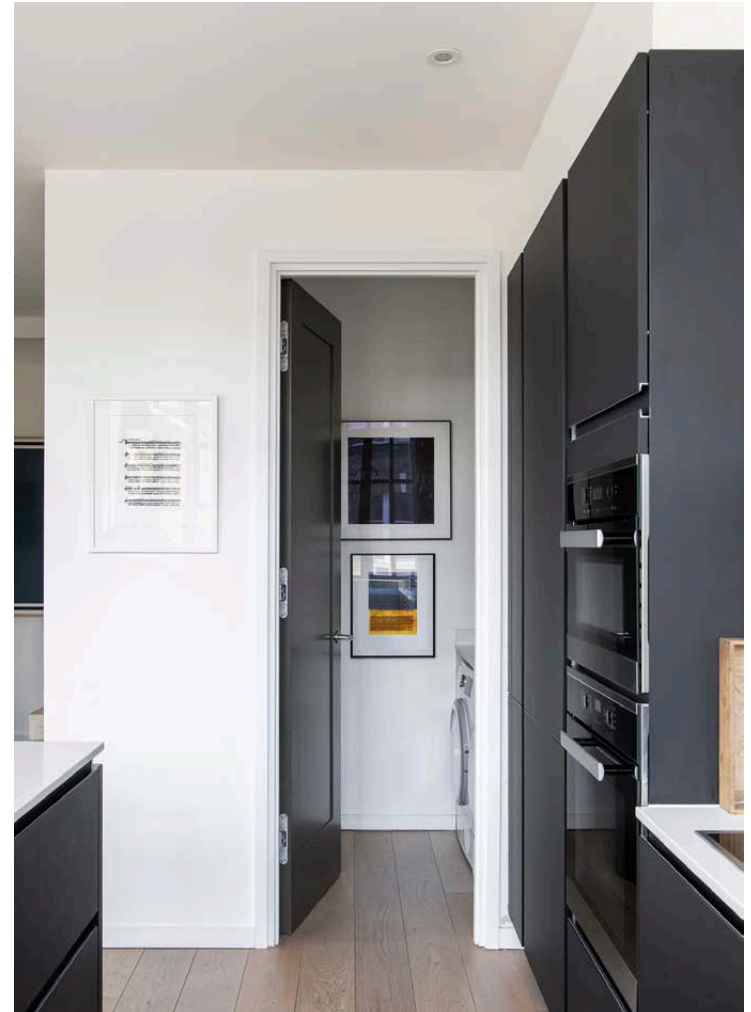
Set in a former factory on handsome Highgate Road, The Maple building pairs an imposing redbrick façade with sophisticated interiors and concierge services. On the first floor, an eye-catching apartment carefully choreographed by fashion designer Jason Basmajian captures an effortless essence of loft-style living.

Illuminated by 10 steel-framed windows, the open-plan kitchen and reception room is organically zoned by its L-shaped form. A striking kitchen unites Miele appliances with minimalist inky cabinetry, plus a stone-topped island crowned with an industrial light feature. Hardwood flooring flows into the dining and reception area beyond, generously flooded in light. Around the corner, a separated space offers versatility as an office or cosy snug.













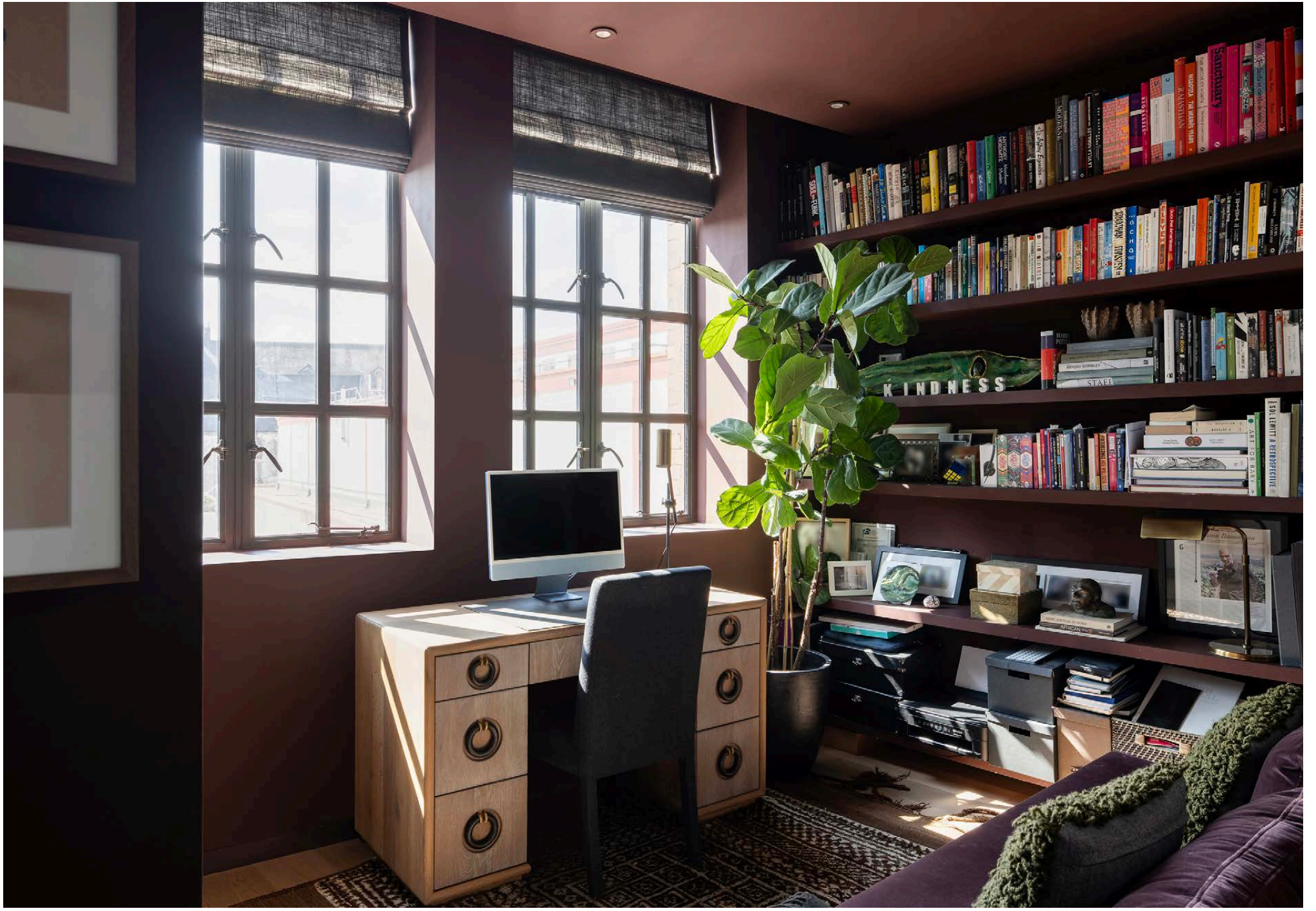
A sense of serenity is evoked in the principal bedroom suite, where south-facing windows warm soft grey hues. Finished in oversized stone tiles, an en suite bathroom features a walk-in rainfall shower.

An additional bedroom combines burgundy hues with integrated storage – a flexible space that could also be used as an office, studio or library room. A stylish family bathroom features a floating cabinet vanity and bathtub with an integrated shower.







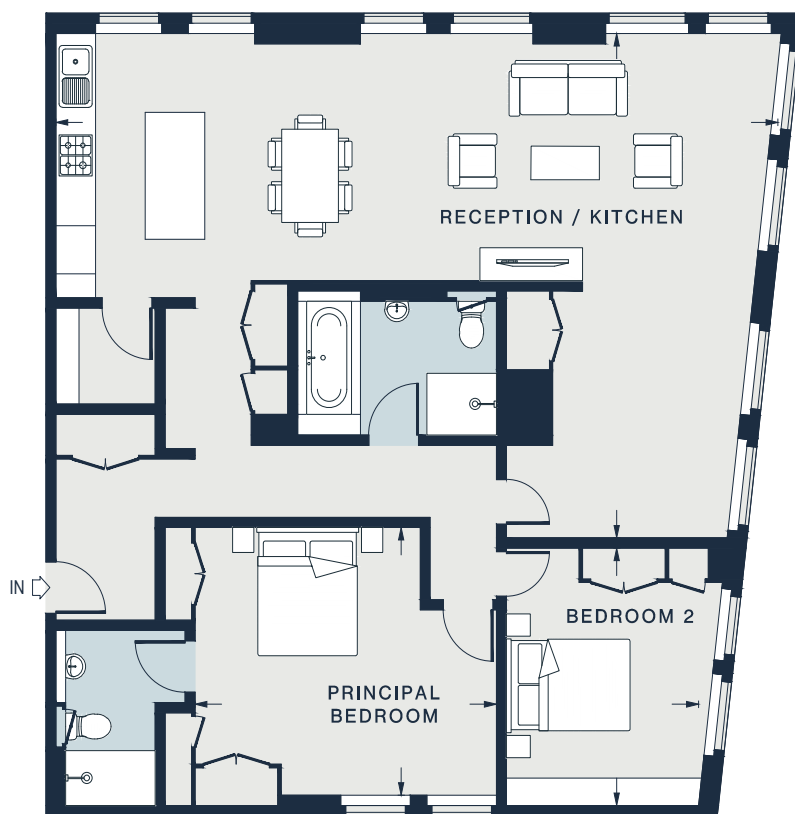






THE BASEMENT LDM.
GYM-STUDIO

THE MAPLE BUILDING



FIRST FLOOR

RECEPTION / KITCHEN
36'5 x 24'2 (11.1m x 7.4m)

PRINCIPAL BEDROOM
15'0 x 13'4 (4.6m x 4.1m)

BEDROOM
12'4 x 9'6 (3.8m x 2.9m)

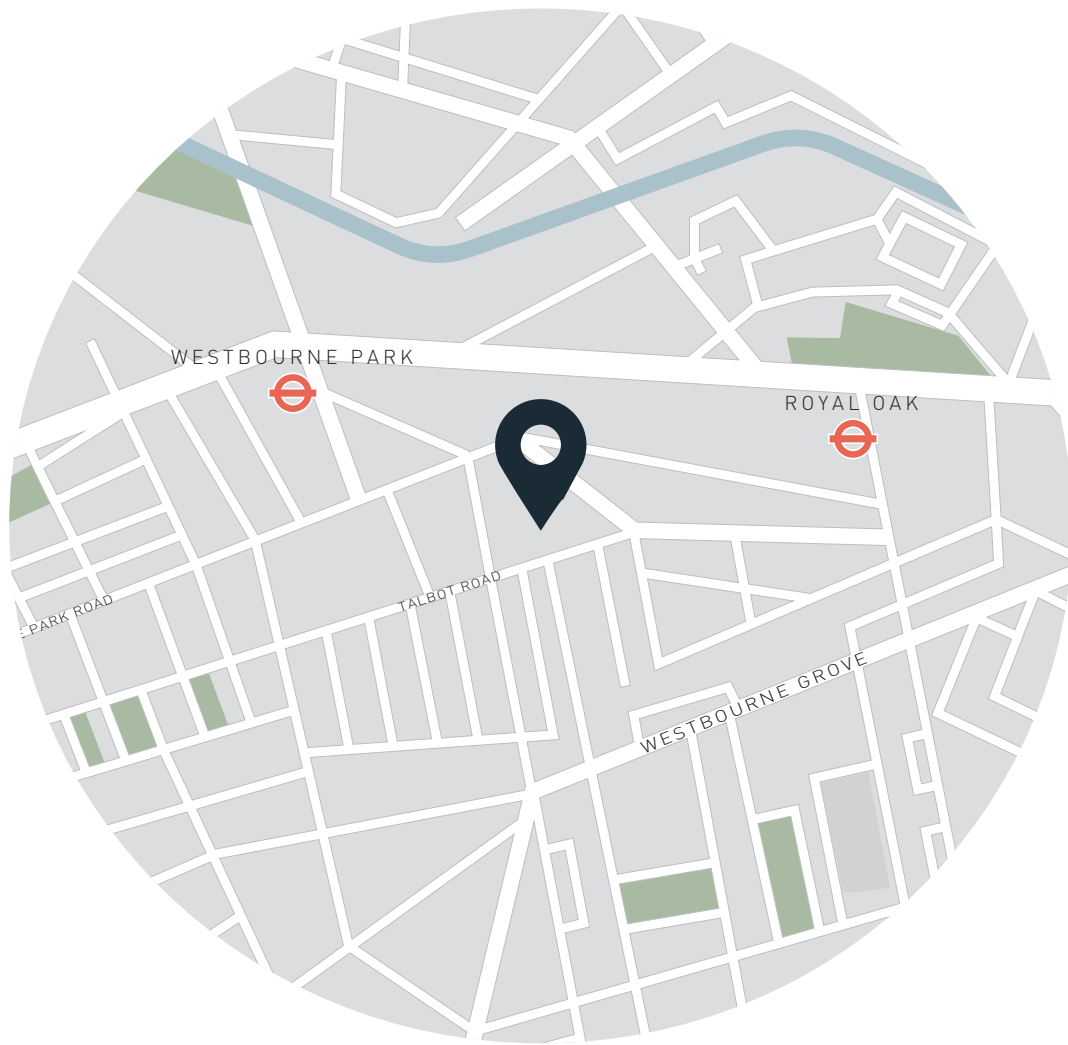
Approx. Gross Internal Area = 1,278 sq ft / 118.7 sq m

Floor plans are for illustrative purposes only and not to scale. Compliant with RICS code of measuring practice.
Furniture layouts are indicative only. This property may be furnished, part-furnished or unfurnished. Please refer to your agent for details.

Property Details

- Open-plan kitchen and reception room
- Media area
- Principal bedroom suite
- Versatile second bedroom
- Family bathroom
- Gym and concierge
- On-site parking
- London Borough of Camden

- Approx 1,278 sq ft / 118.7 sq m
- Tenure: Leasehold
- Lease Length: Circa 243 years
- Council Tax Band - G
- EPC - C
- Service Charge & Ground Rent: Approx. £6000 pa



Location

Community-orientated Kentish Town offers an array of cafes and restaurants. Start your day with pastries from Gail's Bakery or Kossoffs then caffeinate and conversate at Neighbourhood Organic. Within walking distance are the lawns and lakes of Hamstead Heath as well as the pubs and restaurants of Highgate. Wander down Swain's Lane and marvel at Holly Village, co-designed by Charles Dickens. Parliament Hill is also worth the walk for its unbeatable views. While you're there, do a few laps of the lido. For dinner, choose between sushi at Kami, small plates at Kentish Town Stores or French classics from Patron.

Kentish Town – 6 mins (Northern)
Tufnell Park - 8 mins (Northern)
Gospel Oak - 9 mins (Overground)

Specialising in London
and Ibiza's design-led homes

Let's talk
020 7727 1717
lettings@domusnova.com
domusnova.com

The property particulars are a guide not statements. Descriptions, photographs, and plans are for guidance and should be checked by the prospective tenant. The Property is offered "subject to contract and references". No warranties, representations, or Tenancy is given by Domus Nova. Expenses incurred by a prospective tenant will not be reimbursed if the Landlord withdraws prior to the Tenancy Agreement being signed, dated and exchanged and cleared funds received. Furniture and other items shown in a property at viewing may belong to a current tenant. The prospective tenant should verify in writing which fixtures and fittings forms part of the Tenancy. Our full lettings disclaimer together with trading names and our [Privacy Policy](#) is shown on our website