

DOMUS NOVA



Highgate Road
£2,000 pw - Short let



A distinguished two-bedroom apartment in Kentish Town masterminded by its designer owner. This considered home epitomises light-filled, loft-style living.

Set in a former factory on handsome Highgate Road, The Maple building pairs a striking redbrick exterior with marble floors and concierge services. On the first floor, an eye-catching apartment carefully choreographed by fashion designer Jason Basmajian captures the imagination.

Illuminated by 10 steel-framed windows, the open-plan kitchen and reception room is naturally zoned by its L-shaped form. A stone-topped island-cum-breakfast bar, crowned with an industrial light feature, delineates the space between cooking and dining areas.

In the kitchen, minimalistic cabinetry pairs with integrated Miele appliances and a full-height marble backsplash. Hardwood flooring flows into the dining space where a waxed steel table by architect Massimiliano Fuksas is accented by an abstract Fredrikson Stallard bowl. A distinctive Charles Kalpakian wall unit draws playful diagonal lines, producing an angular aesthetic.





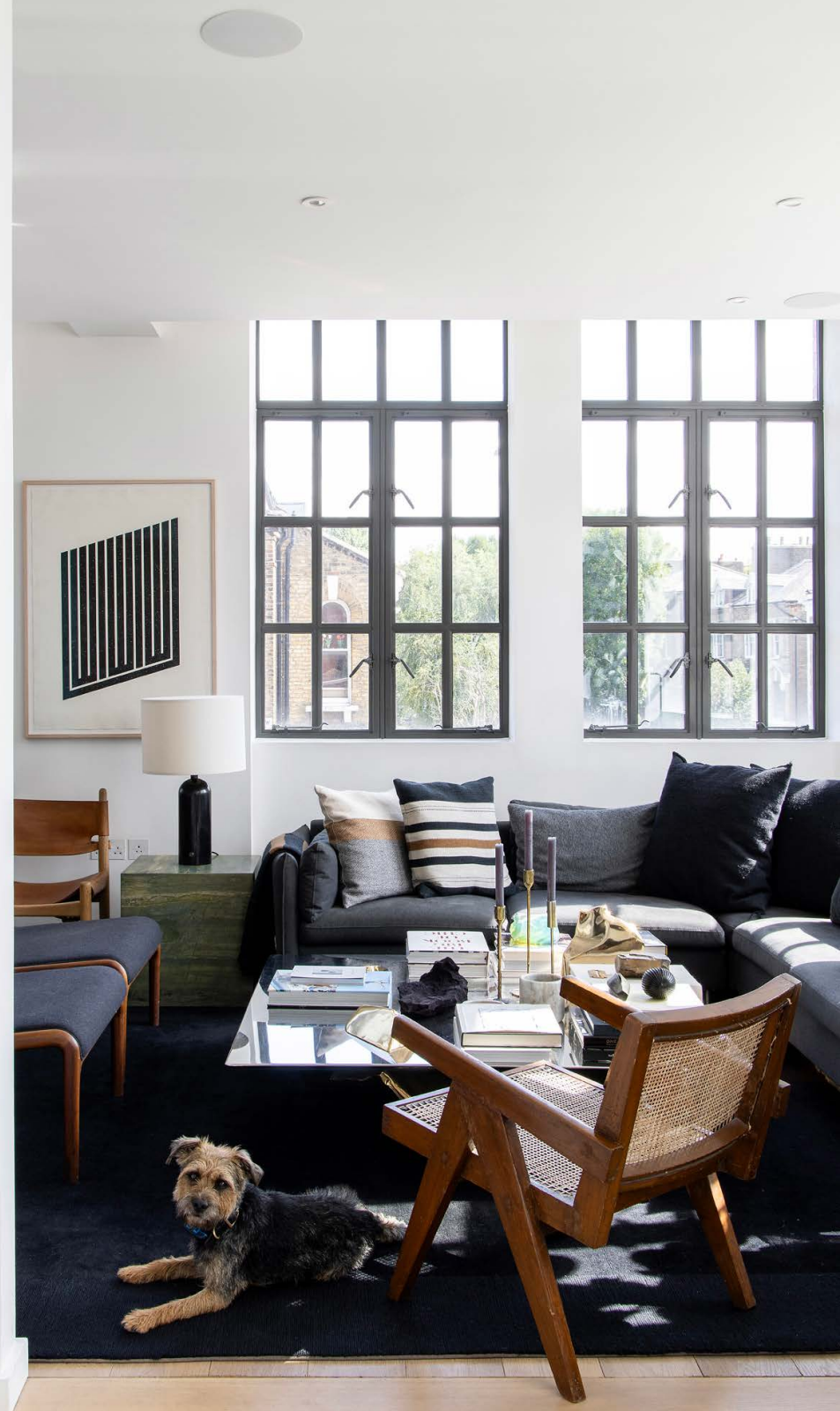






Arranged around a steel and glass coffee table, the living area draws together thoughtfully selected furnishings including an iconic teak lounge chair by architect Pierre Jeanneret. Around the corner, a media area benefits from a rosewood cabinet, vintage Falcon chairs and photography by Mark Ruwedel.

A sense of serenity and sophistication has been created within the calming principal bedroom suite. This generous space enjoys two south-facing windows, Italian 1940s chairs upholstered in red mohair and an en suite with a walk-in rainfall shower finished in oversized stone tiles.





An additional bedroom combines burgundy hues, integrated storage and a daybed finished in Kvadrat velvet. Complete with an oak desk designed by artist Teresa Hastings, this flexible space could also be used as an office.

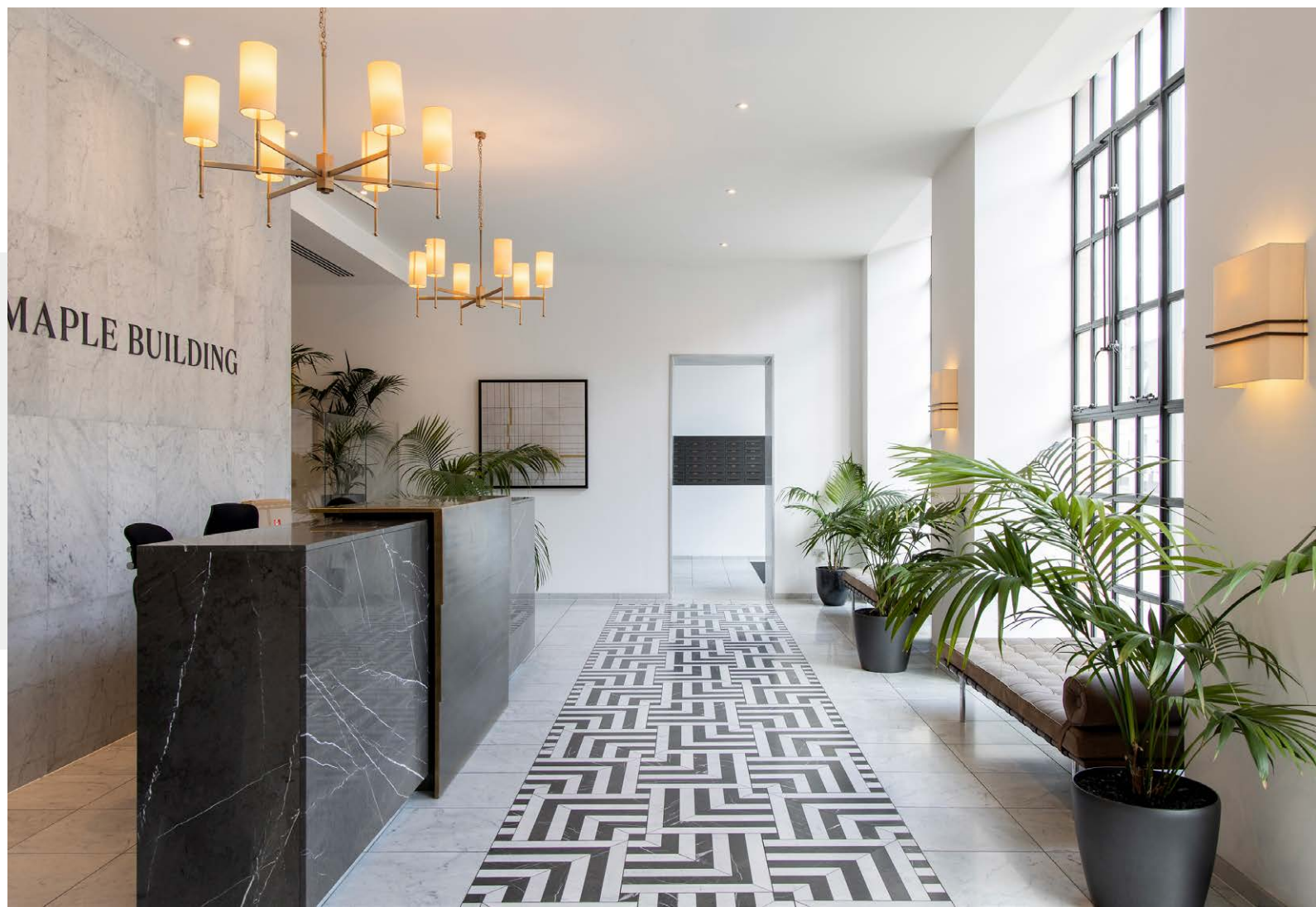
A stylish family bathroom features a floating cabinet vanity and bathtub with an integrated shower.



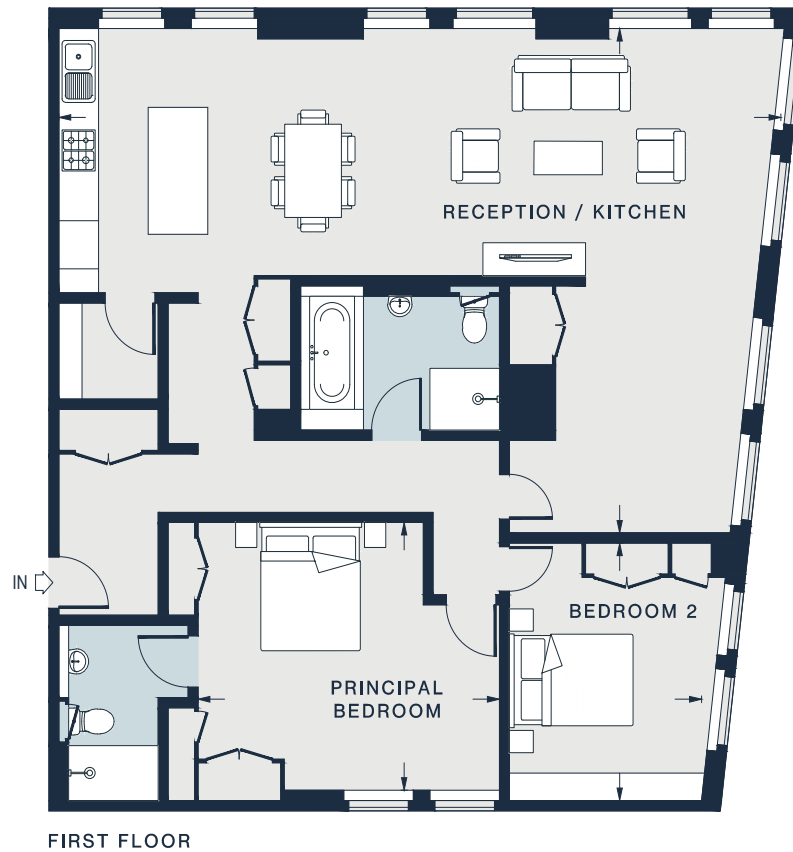












RECEPTION / KITCHEN
36'5 x 24'2 (11.1m x 7.4m)

PRINCIPAL BEDROOM
15'0 x 13'4 (4.6m x 4.1m)

BEDROOM
12'4 x 9'6 (3.8m x 2.9m)

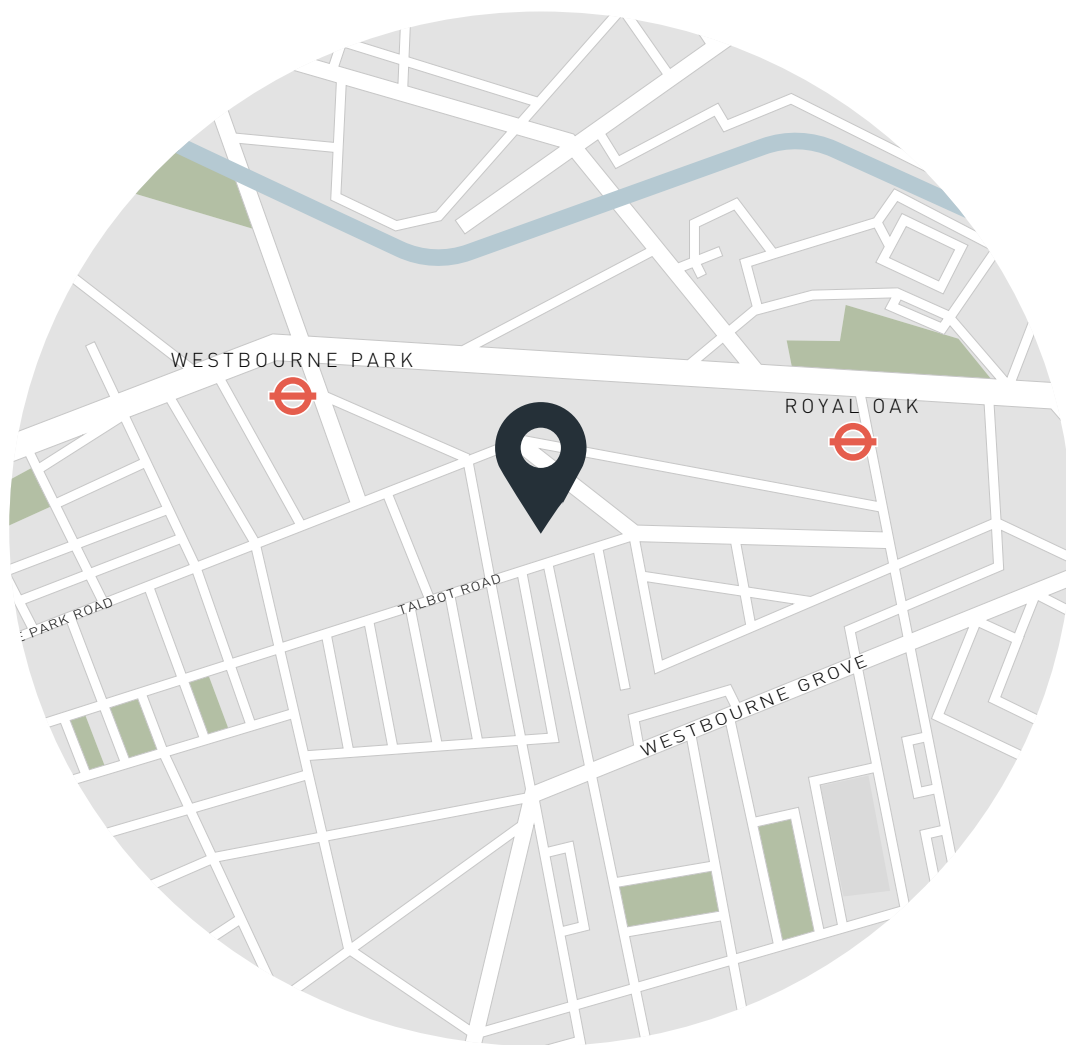
Approx. Gross Internal Area = 1,278 sq ft / 118.7 sq m

Floor plans are for illustrative purposes only and not to scale. Compliant with RICS code of measuring practice.
Furniture layouts are indicative only. This property may be furnished, part-furnished or unfurnished. Please refer to your agent for details.

Property Details

Open-plan kitchen and reception room
Media area
Principal bedroom suite
Flexible bedroom and study space
Family bathroom
Gym and concierge
On-site parking
London Borough of Camden

Approx 1,278 sq ft / 118.7 sq m
Council Tax Band - G
Deposit Payable - £8,000
EPC - C



Location

Community-focussed Kentish Town offers the best of both worlds. This North London enclave is a springboard to the city while also offering close proximity to Epping Forest as well as the Hertfordshire countryside. Nearer to home, start your day with pastries from Gail's Bakery or Kossoffs. Caffeinate and converse at Neighbourhood Organic. Parliament Hill is worth the walk for its incredible views of the cityscape. While you're there, do a few laps of the lido. For dinner, choose between sushi at Kami, small plates at Kentish Town Stores or French classics from Patron.

Narest tube:

Tufnell Park - 8 mins

Gospel Oak - 9 mins

Specialising in London
and Ibiza's design-led homes

Let's talk
020 7727 1717
lettings@domusnova.com
domusnova.com

The property particulars are a guide not statements. Descriptions, photographs, and plans are for guidance and should be checked by the prospective tenant. The Property is offered "subject to contract and references". No warranties, representations, or Tenancy is given by Domus Nova. Expenses incurred by a prospective tenant will not be reimbursed if the Landlord withdraws prior to the Tenancy Agreement being signed, dated and exchanged and cleared funds received. Furniture and other items shown in a property at viewing may belong to a current tenant. The prospective tenant should verify in writing which fixtures and fittings forms part of the Tenancy. Our full lettings disclaimer together with trading names and our [Privacy Policy](#) is shown on our website