

DOMUS NOVA



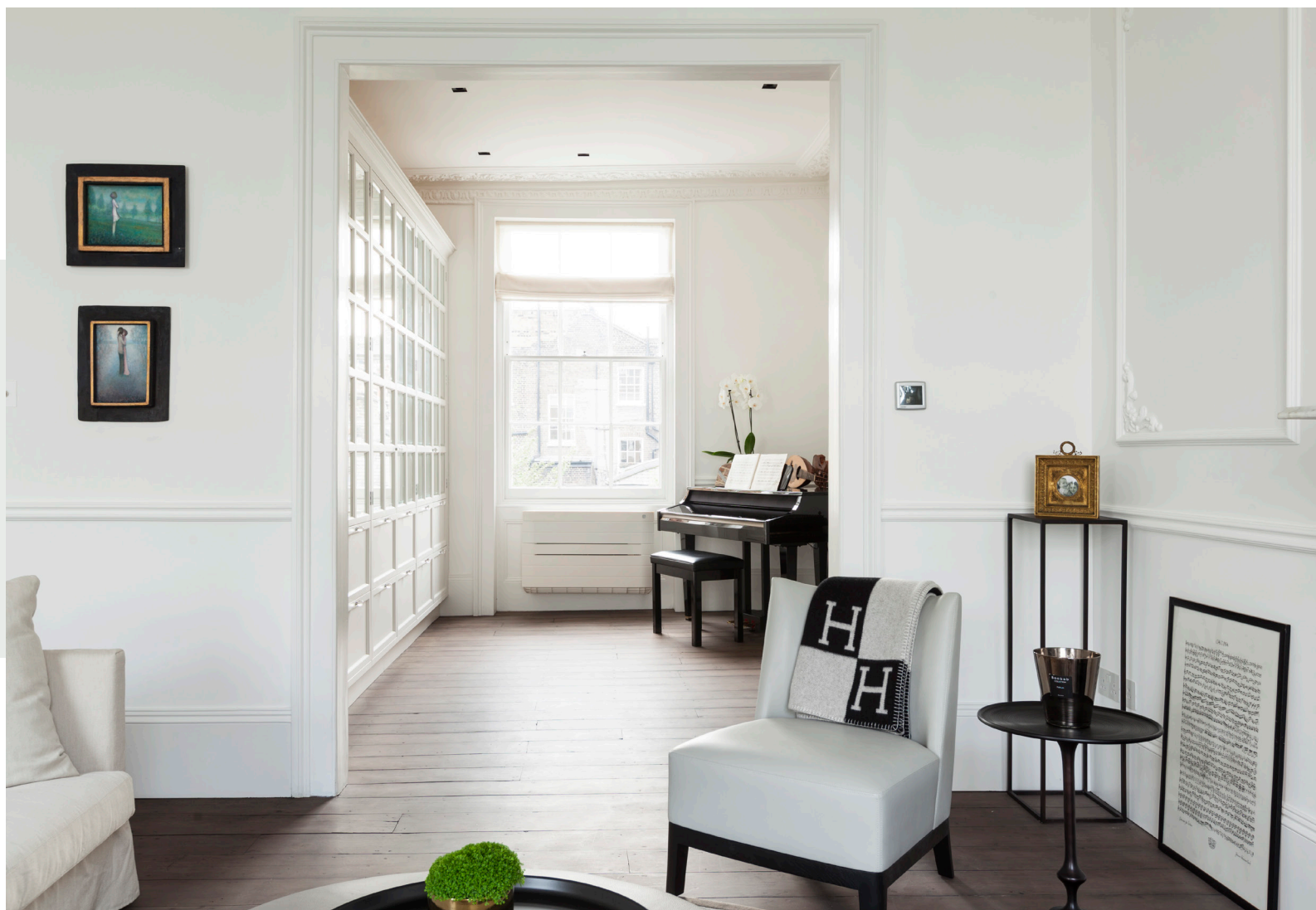
Hereford Road W2
£8,000 p/w - Long Let



Sleek and stylish family living, spread across five floors of a quintessential Notting Hill townhouse.

This four-bedroom townhouse puts a contemporary twist on its handsome period framework. Step inside a dual-aspect open-plan kitchen and dining room, where Carrara marble surfaces and stainless-steel finishes make for a stylish culinary environment. A muted sage leather bench and a wooden dining table is a relaxed place to eat. From here, head down steps to a cosy sky-lit living space with an inviting L-shaped sofa. Through double French doors, a terrace is complete with a canopy and cast-iron railings which lead to the garden below. Part patio, part lawn, its envisaged for alfresco entertaining with an enviable south-west facing position.

The first floor houses a formal double reception room, with uplifting light emanating through dual-aspect sash windows. Period accents – an ornate fireplace, decorative cornicing and wainscoting – are a backdrop for minimalist furniture; the neutral palette and exposed wood floors are thoroughly soothing. Through an archway, a grand piano sits opposite a wall of white-framed mirrors – amplifying the sense of space and light.







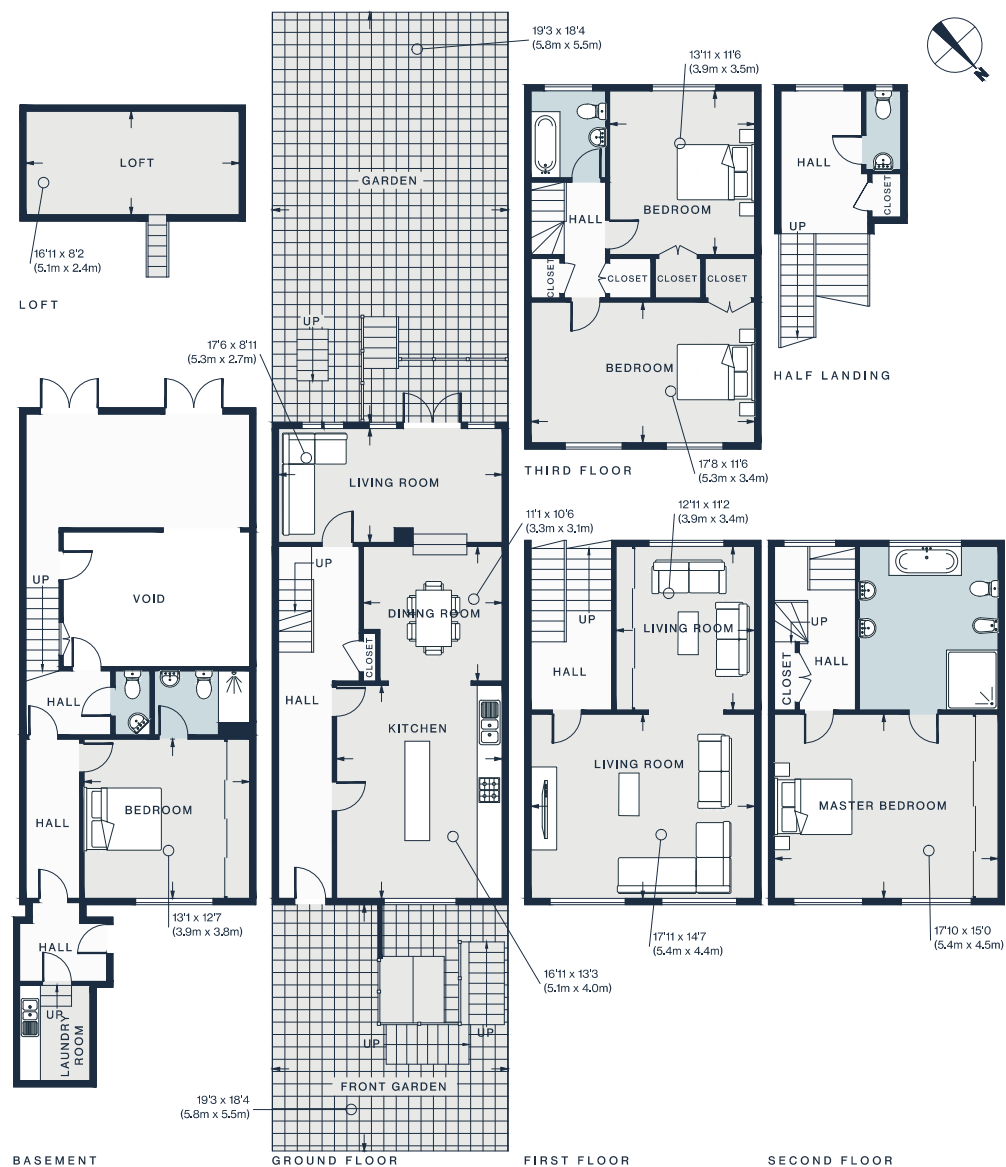


The master bedroom suite unfurls across the second floor. Its stone-coloured tones, sweeping wood floors and wall of floor-to-ceiling wardrobes afford the space a tranquil feel. Next door, the ensuite bathroom is a showpiece of considered design featuring a clean-line double vanity, free-standing bath and reams of natural light. Two further bedrooms and a family bathroom are located on the third floor, whilst a third bedroom and music room can be found on the basement level.









Property Details

Open-plan kitchen and dining room
 Two reception rooms
 Master bedroom suite
 Three further bedrooms
 Two further bathrooms and two further WCs
 Terrace and garden
 Royal Borough of Kensington and Chelsea

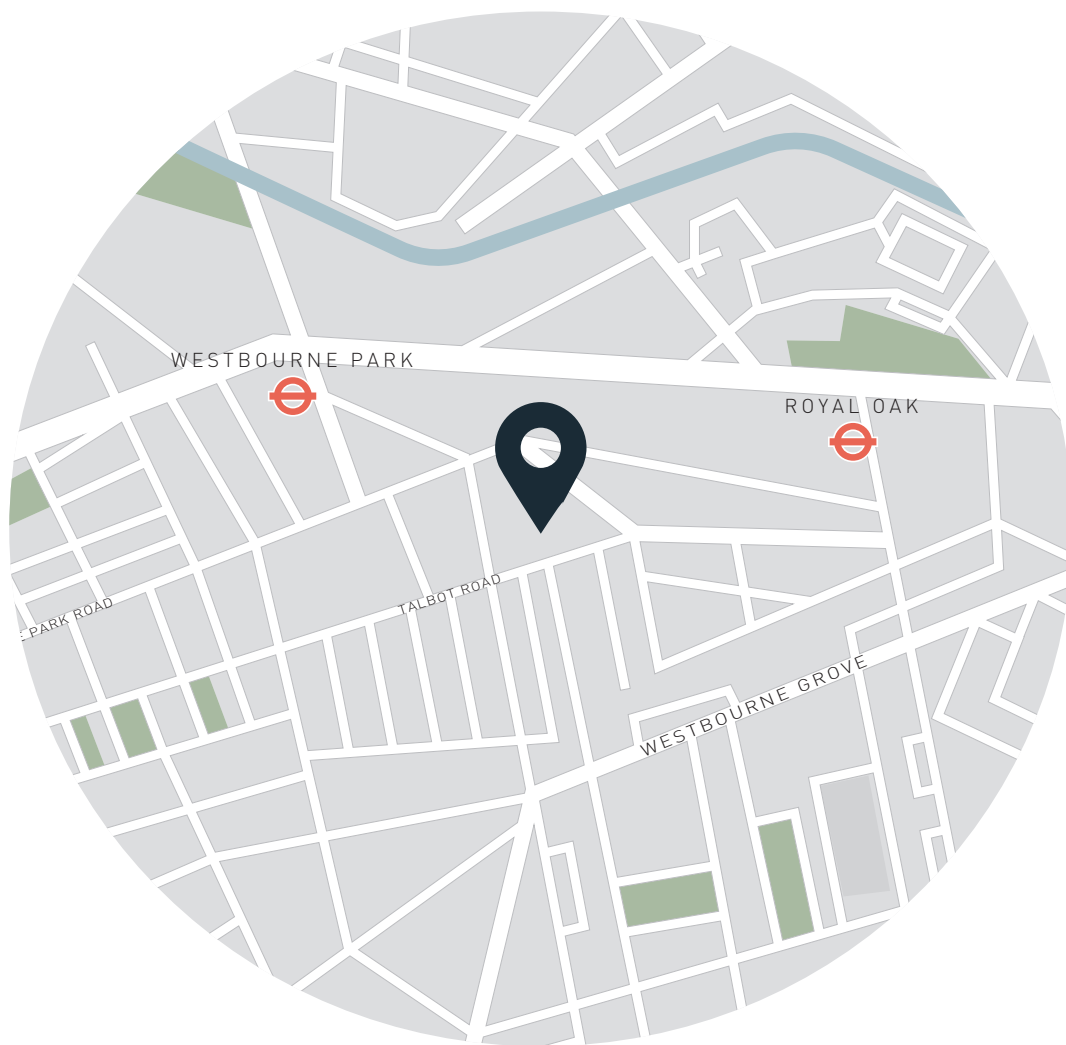
Approx. 2820 Sq. Ft / 262 Sq. m

EPC = D

Council Tax Band - H

Deposit payable - £48,000

Floor plans are for illustrative purposes only and not to scale. Compliant with RICS code of measuring practice. Furniture layouts are indicative only. This property may be furnished, part-furnished or unfurnished. Please refer to your agent for details.



Location

Just minutes from Westbourne Grove, the beating heart of Notting Hill, the best of the neighbourhood is at your doorstep. Pick up an early coffee from Beam or sit down for a late morning brunch at Granger & Co. The lively thrum of Portobello Road vaunts antique stalls and vintage shops, with rows of luxury boutiques along Westbourne Grove lining your walk there. Siegfried Contemporary and Ross Lovegrove are must-visit art showrooms, followed by a visit to three Michelin-star restaurant Core by Clare Smyth

Nearest tube:
Royal Oak - 7 mins

DOMUS NOVA

Specialising in London
and Ibiza's design-led homes.

Let's talk
020 7727 1717
lettings@domusnova.com
domusnova.com