

DOMUS NOVA



Harrington Gardens SW7 – £3,750 p/w (LL)

In partnership with **BARNES**
INTERNATIONAL REALTY



Harrington Gardens is one of South Kensington's most sought-after streets, lined with towering red-brick mansion blocks that surround the residents' communal gardens. Contained within a historic townhouse is this sophisticated three-bedroom triplex apartment, imagined with refined design, contemporary technologies and a wholly welcoming atmosphere.

Ascend to the second floor and enter an open-plan kitchen, dining and reception room. The spacious footprint and trio of sash windows — with views of leafy Gloucester Park — are an elegant backdrop for modern interiors; an inviting sitting area is arranged around a marble fireplace, while a dining table is positioned beneath glass pendant lighting. An archway leads into the culinary space, which has been drawn with charcoal-blue cabinets, smooth wood worktops and a central island complete with breakfast stools.









“ The spacious footprint and trio of sash windows — with views of leafy Harrington Gardens — are an elegant backdrop for modern interiors.









Come evening, two bedrooms are calming sanctums to rest or relax. In the first bedroom, a considered synergy between light, texture and tone unfolds. Alcoves are primed for artwork or oddities, while custom cabinetry frames the bed to enhance the sense of space. In warmer months, draw back the curtains to an intimate balcony – an idyllic spot for morning coffees. Considered styling and acquired antiques adorn the second bedroom, where soft furnishings echo a lively wall of artwork. Enhanced with natural light from two tall sash windows and a skylight above, this soothing setting invites relaxation.

Serving both bedrooms, a sophisticated bathroom is enveloped in deep navy hues. Crafted with hand-made tiles, a walk-in rainfall shower completes the sleek space.









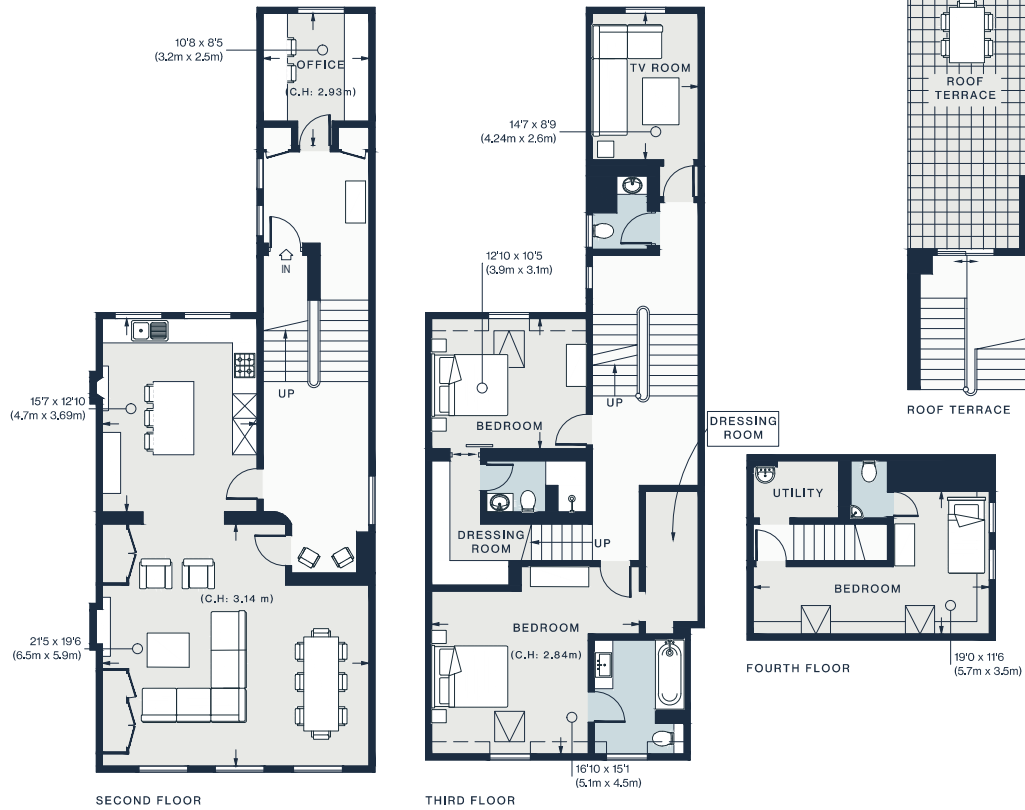












Property Details

- 3 bedrooms, 3 bathrooms
- Triplex apartment
- Open-plan kitchen, reception and dining room
- Television room
- Principal bedroom suite
- Two guest bedroom suites
- Home office
- Utility room
- Additional WC
- Roof terrace
- Access to Gloucester Park, the residents' communal gardens
- Royal Borough of Kensington & Chelsea

Approx. 2,157 sq ft / 200.5 sq m

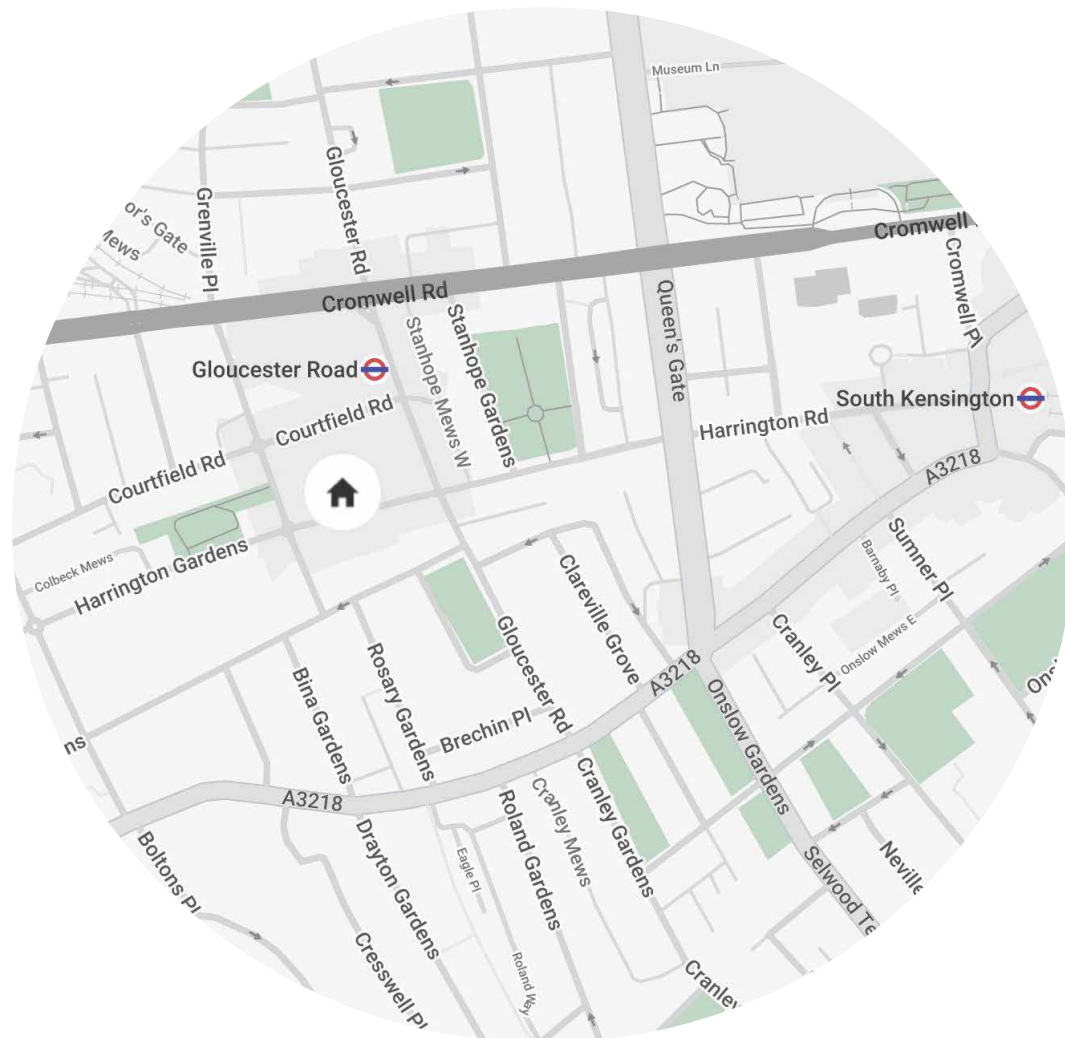
EPC = Rating E

Council Tax Band = G

Deposit = £22,500

Approx. Gross Internal Area = 2157 sq ft / 200.5 sq m

Floor plans are for illustrative purposes only and not to scale. Compliant with RICS code of measuring practice.
Furniture layouts are indicative only. This property may be furnished, part-furnished or unfurnished. Please refer to your agent for details.



Location

Some of London's most revered museums along Exhibition Road are within walking distance, putting Harrington Gardens at the centre of the cultural action. Coveted local restaurants such as Macellaio RC, Cambio De Tercio, Yashin Ocean House and Margaux are just minutes from your front door, perfect for get-togethers after a stroll around Brompton Cemetery – one of the capital's seven historic burial grounds. It's not far to reach the upmarket retail offerings along Chelsea's Kings Road too, followed by an evening at speakeasy bar Evans & Peel or with live music at The Troubadour.

Gloucester Road – 5 mins (Circle, District, Piccadilly)



Who ——— we are

Forward-thinkers in property, design and culture, we're an estate agency that hits refresh.

Domus Nova was born out of a desire to do things differently; to break the traditional agency model and focus on design-led homes in London and Ibiza, all while delivering the highest levels of personal service.

Our story starts in the nineties when we founded Notting Hill's first boutique agency – and we continue to open the doors to the most remarkable spaces, revealing them to our like-minded community.

We want to help you live better – and believe considered design can do that. That's why we remain committed to building on our legacy, in collaboration with BARNES International, an established agency with a market-leading presence in 22 countries.

Uniting our local insight and curated portfolio with BARNES International's expansive reach, we can facilitate the best opportunities in not only London and Ibiza, but also across Europe, the US and further afield – whether that's a château in the South of France, a penthouse in New York, or a chalet in the Swiss Alps.



DOMUS NOVA

Specialising in London
and Ibiza's design-led homes

Let's talk

020 7727 1717

lettings@domusnova.com

The property particulars are a guide not statements. Descriptions, photographs, and plans are for guidance and should be checked by the prospective tenant. The Property is offered "subject to contract and references". No warranties, representations, or Tenancy is given by Domus Nova. Expenses incurred by a prospective tenant will not be reimbursed if the Landlord withdraws prior to the Tenancy Agreement being signed, dated and exchanged and cleared funds received. Furniture and other items shown in a property at viewing may belong to a current tenant. The prospective tenant should verify in writing which fixtures and fittings forms part of the Tenancy. Our full lettings disclaimer together with trading names and our [Privacy Policy](#) is shown on our website

© 2025 Domus Nova in partnership with BARNES International. All rights reserved.

In partnership with
BARNES
INTERNATIONAL REALTY