

# DOMUS NOVA



Goldhawk Road, W12  
£4,950,000





Description In a quiet residential patch of Hammersmith, this five-bedroom family home inspires creativity. Across its expansive interior footprint, spaces have been thoughtfully curated by Bobo Design Studio, with eclectic details and uplifting colours, plus a wealth of glazing that encourages connectivity to the outdoors.

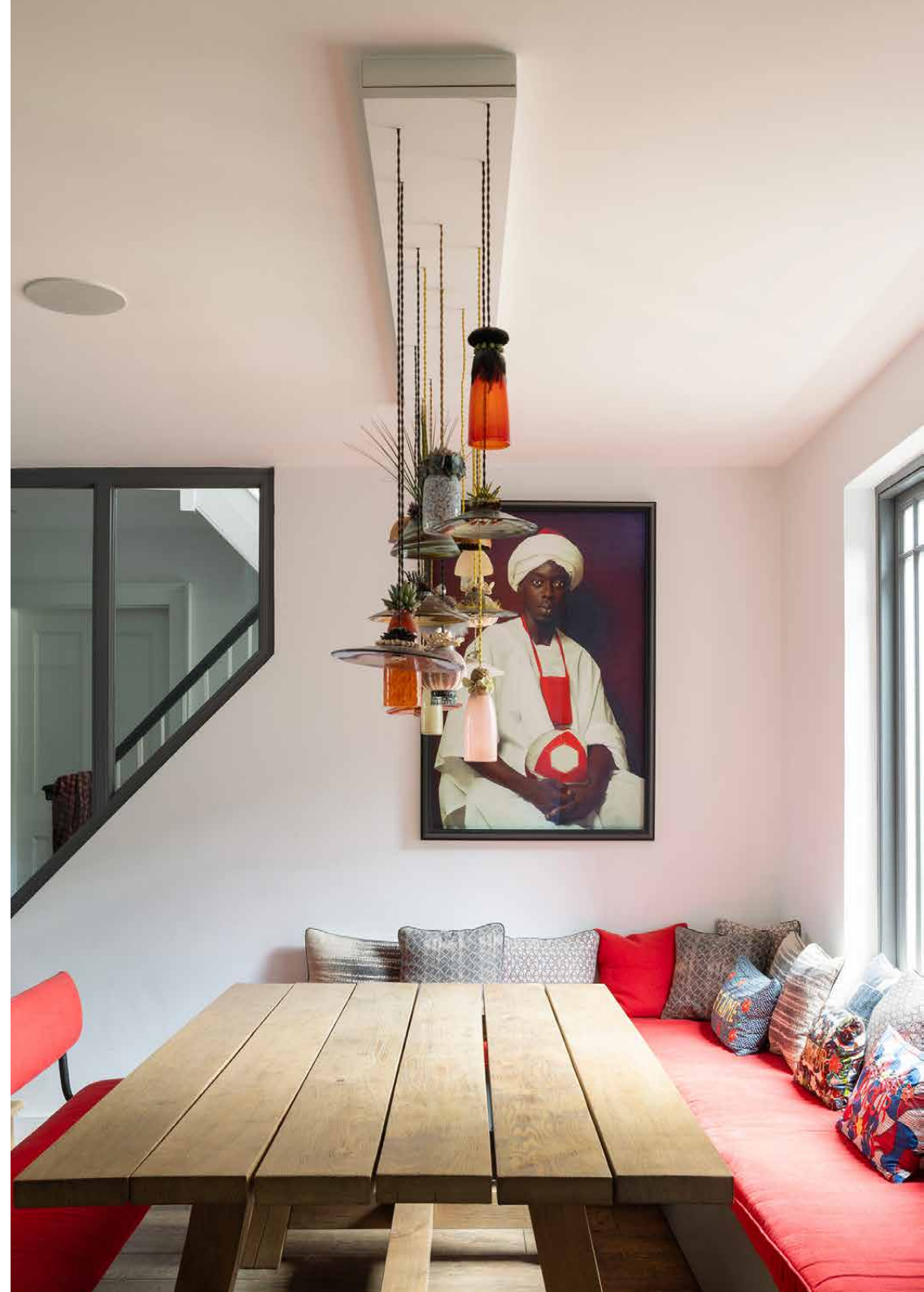
There's a charming first impression to the home, with its private driveway, mature trees and smart brickwork. Behind the storied façade, striking contemporary design comes to the fore. A curved archway leads into the modish reception room – a tranquil space emboldened with its striking colour palette. Dark ceilings and painted floors lend attention to the pillarbox-red feature wall, with a black fireplace surround as a focal point. There are views out to the garden through a sash window, while shutters can be drawn to create a cosy ambiance for film nights.







The heart of the home, an open-plan kitchen, dining and living room is an aesthetically engaging setting. Through a glass door, a set of steps leads down to the sprawling social space. The made-to-measure kitchen is all smooth worktops and grey cabinetry, complete with hi-tech Smeg, Siemens and Quooker appliances. Adjacent, there's a relaxed eating area featuring banquette seating and coloured glass pendant lights above. Natural light abounds across the space, courtesy of several windows, skylights and a large circular ceiling void – a design spectacle in itself. Cubic open shelving spans an entire wall, framing a granite-toned fireplace. From the kitchen, a bespoke wine cellar is finished in a bright red hue. Completing this level is an en suite bedroom currently configured as an office, with picture windows overlooking the garden.

















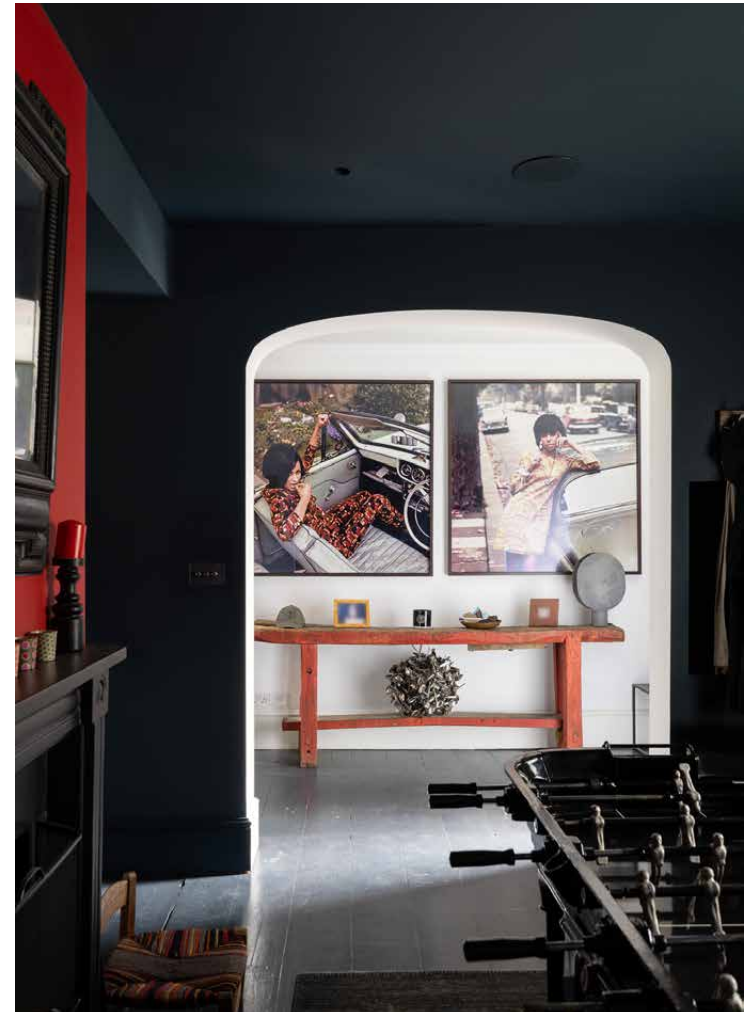














With its curved form and whitewashed colour, there's a stimulating feel to the stairwell as you ascend to the first floor. The principal bedroom suite is a sanctuary of cool tones and sleek materials, with a dedicated dressing area and separate WC. An open entryway leads into the bathroom, complete with a freestanding tub and oversized dual shower with lustrous marble walls. It's a thoroughly tranquil scene with leafy views out of the picture window. Three additional bedrooms maintain the home's modern interior style, with pared-back tones and reams of sunlight. One of the rooms enjoys a serene en suite shower room, while a family bathroom serves the other two.































Thoughtfully designed by Jonathan Snow – double award winner at the Chelsea Flower Show – the landscaped garden feels worlds away from the city.

Awarded a Gold Medal and the award for Best Construction in 2021, its thoughtful design allocates areas to spread out. A magnolia tree creates a beautiful backdrop for the patio; in warm weather, gather friends for al fresco dining, complete with a Weber barbecue and outdoor kitchen contained beneath a wood veranda. Beyond, the lawn is surrounded by lush hedgerows and plants. At the rear of the 1,000 square metre garden, wooden decking borders a swimming pool – at the bottom of which lies a striking nature mural by artist Mathilde de l'Ecotais. There's a summer house complete with an en suite bathroom – a versatile space ideal as a gym, guest bedroom or study. At the garden's edge, a discreet gate leads just 50 yards to Ravenscourt Park, featuring open green spaces, playgrounds and tranquil walking trails.

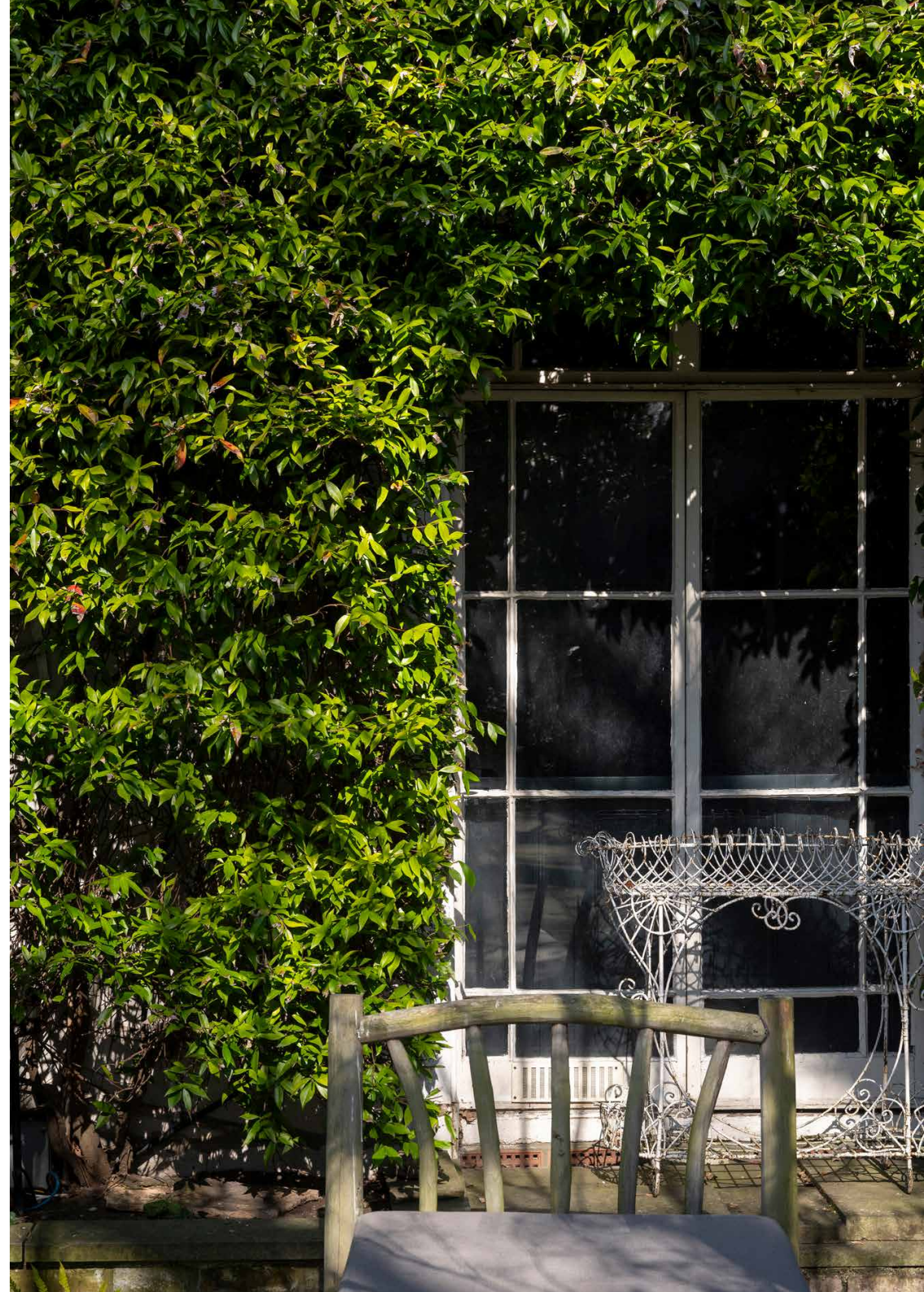








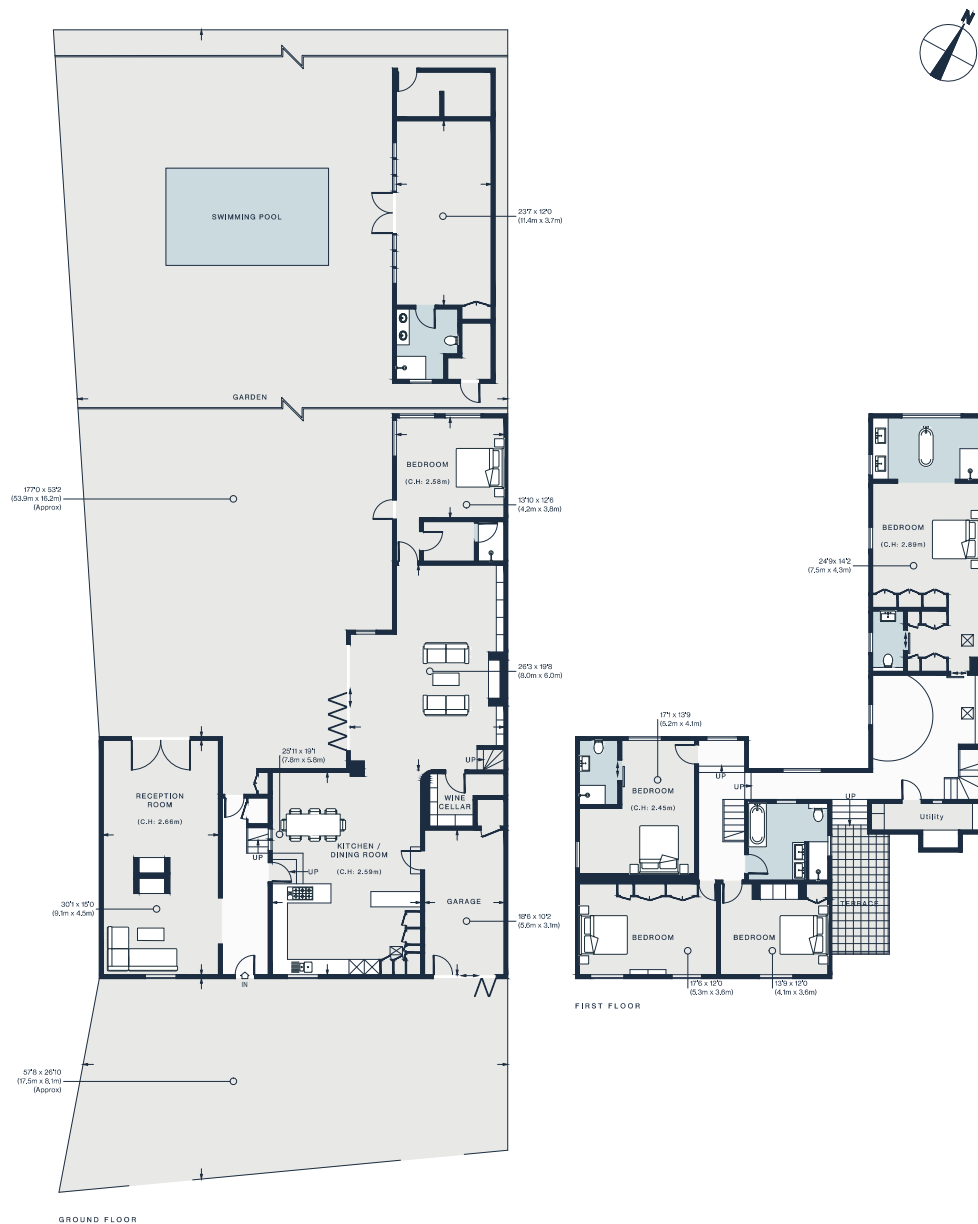












Approx. Gross Internal Area = 3,779 sq ft / 351.1 sq m  
Outbuildings = 473 sq ft / 43.9 sq m  
Total = 4,252 sq ft / 395 sq m  
Pool = 1,012 sq ft / 94 sq m

Floor plans are for illustrative purposes only and not to scale. Compliant with RICS code of measuring practice.

## Property Details

Interior design by Bobo Design Studio

Garden design by Jonathan Snow

Formal reception room

Open-plan kitchen, dining and living room

### Principal bedroom suite

Guest bedroom suite

Two further bedrooms

Family bathroom

Private garage and parking for three cars

Wine cellar

Private garden with swimming pool and outdoors kitchen

Summer house with en suite bathroom

Borough of Hammersmith and Fulham

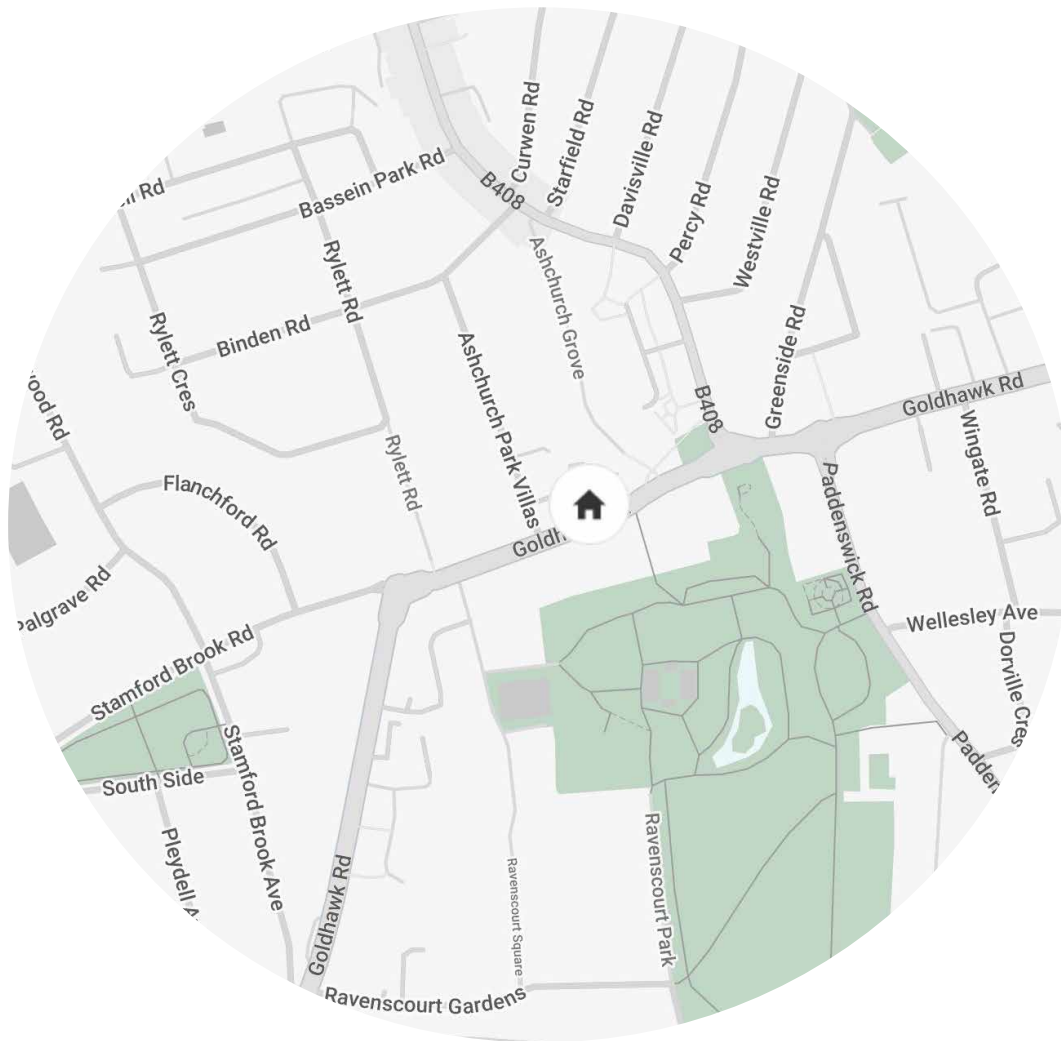
Approx. 4,252 sq ft / 395 sq m

EPC=D

Tenure: Freehold

Council Tax Band: G





## Location

From the Westway down to the River Thames, this West London patch has a vibrant music and theatre scene, coveted restaurants and generations-old weekly markets that prove W12's commitment to the local community. Natural tranquillity comes in the form of Ravenscourt Park, through which you'll reach Brackenbury Village, replete with independent delis and cafes. Stock up on produce or source textiles and clothing at the Shepherd's Bush street market, which has been in business for over a century. Dine at Sam's Riverside, The River Cafe or The Dove before a night of culture at the Grade-II listed Eventim Apollo, Lyric Theatre or O2 Shepherd's Bush.

Ravenscourt Park - 10 mins (Circle, District)

Specialising in London  
and Ibiza's design-led homes

Let's talk  
020 7221 7817  
sales@domusnova.com  
domusnova.com

The particulars above are a guide, not an offer or contract. Descriptions, photographs and plans are not statements or representations of fact. Measurements are approximate and not to scale. Prospective purchasers must verify the accuracy of the information within the particulars. Domus Nova does not give any representations or warranties; nor represent the Seller legally. Domus Nova has no liability, for any costs, losses or expenses incurred by the Seller or a prospective buyer relating to the sales and buying transaction.

Our Sales Disclaimer, trading names and privacy policy on how your data is processed and used is found in full on our website in our [Privacy Statement](#).

© Domus Nova 2025. All rights reserved.