

DOMUS NOVA



Golden Cross Mews W11

£2,000,000



Set in a gated mews off the iconic Portobello Road, this two-bedroom home is crafted with finely-tuned interior style.

Positioned behind one of West London's most famed market streets is a quieter residential enclave. Beyond its private security gates, a cobbled cul-de-sac is lined with a collection of redeveloped properties — uniform with their pale brickwork, dark timber panelling and denim-blue exterior girders. Across its three storeys, this two-bedroom mews home is sophisticated in style and relaxed in feel.

The home's social heart is located on the first floor, introduced by a minimalist staircase. It's a quietly smart setting; whitewashed walls are poised for artful interior creativity. To one side of the room, charcoal-toned cabinetry and marble worktops make for a stylish culinary set-up. To the other, there's space for respective living and dining areas. Natural light is filtered in through French windows that open onto a Juliet balcony.



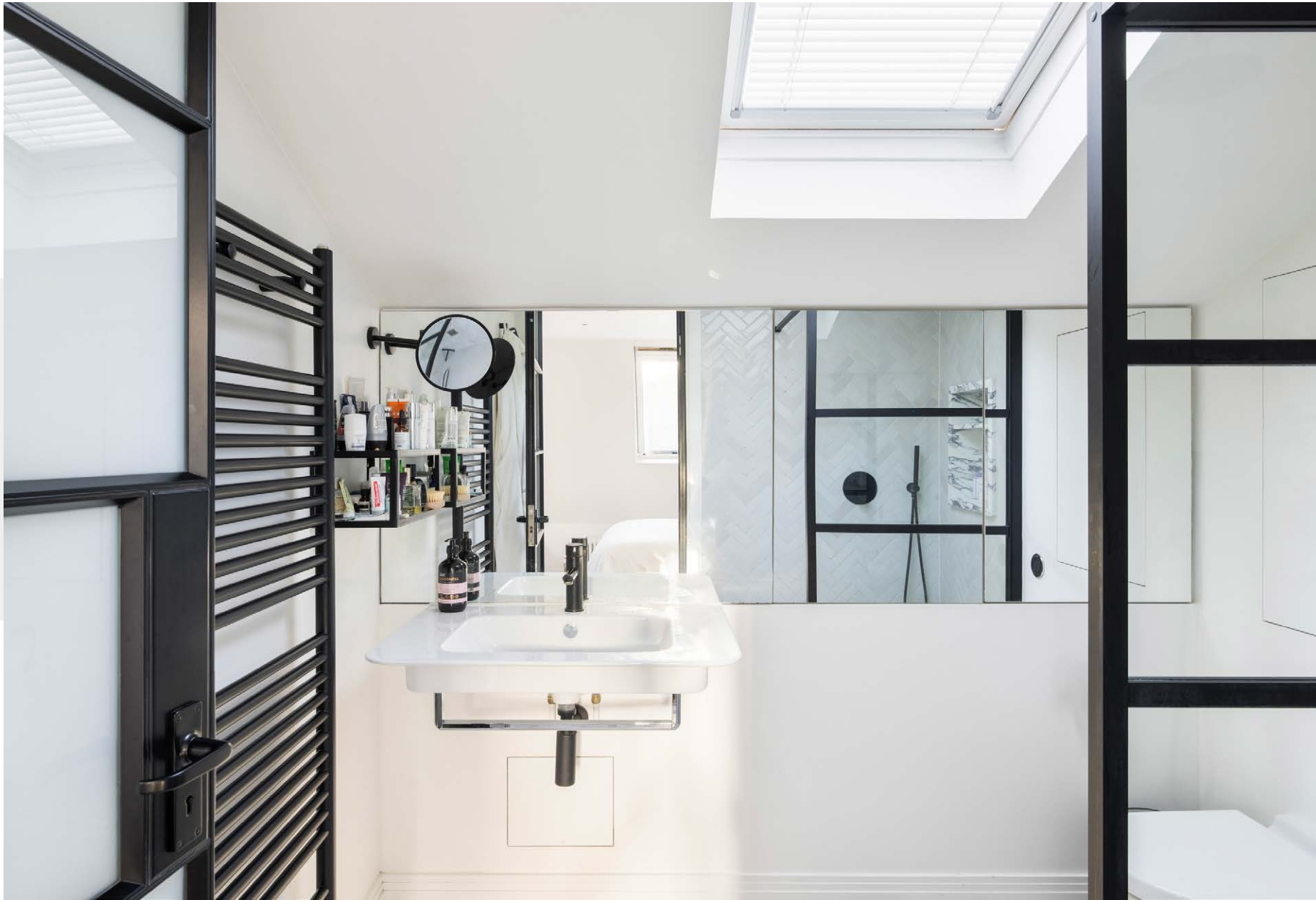




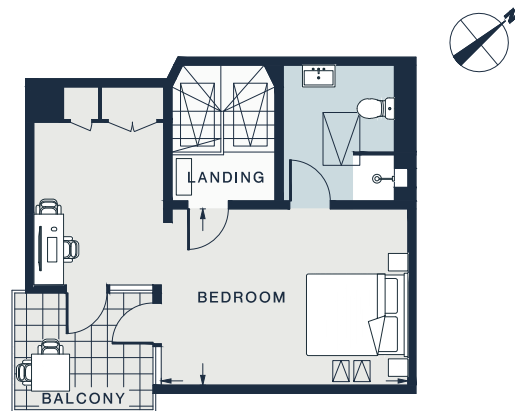
The stairwell is crowned with two skylights, illuminating the ascent to the second floor. An urban edge is drawn by Crittall-style glass doors that open into the principal bedroom suite. There's a peaceful aspect to the room, with its neutral walls and abundance of natural light. Its adjoining bathroom is modern and monochrome: glossy white herringbone tiles are paired with black framed glazing and faucets. There's access to an intimate roof terrace from this storey, a quiet suntrap to make the most of London's sunnier months. Completing the home is an additional reception room, bedroom and bathroom on the ground floor — versatile spaces that can be reimagined as an office, gym or dressing room.



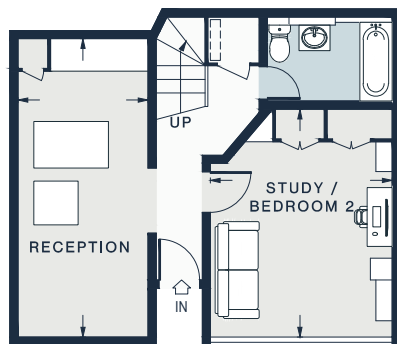




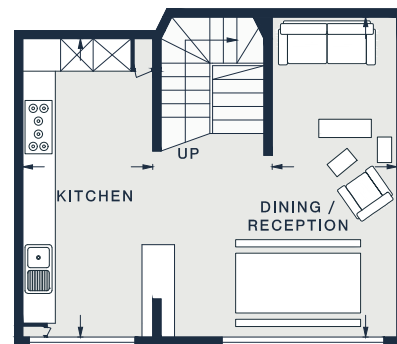




SECOND FLOOR



GROUND FLOOR



FIRST FLOOR

RECEPTION
17'11 x 7'10 (5.5m x 2.4m)

STUDY / BEDROOM 2
13'9 x 10'11 (4.2m x 3.3m)

KITCHEN
18'4 x 7'10 (5.6m x 2.4m)

DINING / RECEPTION
19'2 x 7'5 (5.8m x 2.3m)

BEDROOM
14'10 x 10'8 (4.5m x 3.2m)

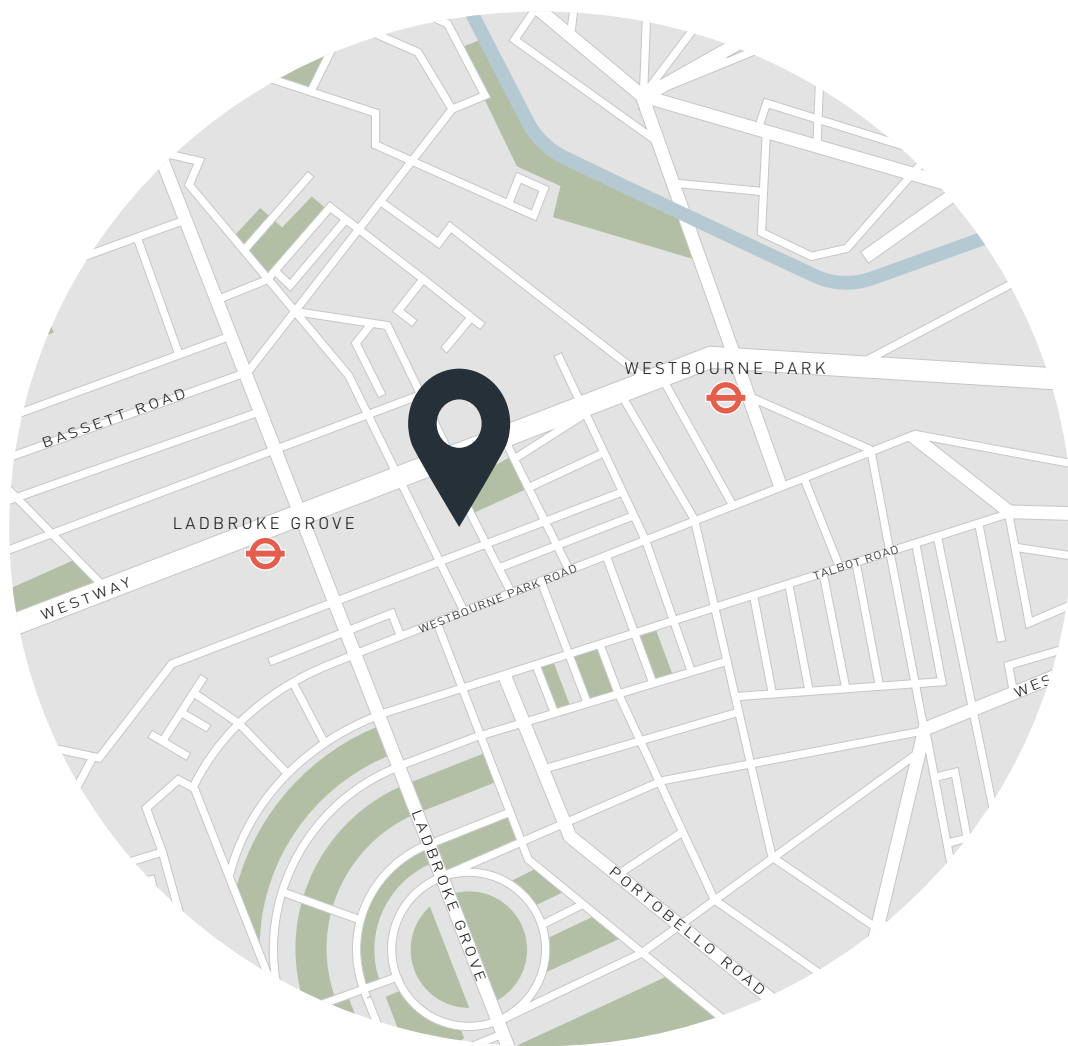
Approx. Gross Internal Area = 1,219 sq ft / 113.3 sq m

Floor plans are for illustrative purposes only and not to scale. Compliant with RICS code of measuring practice.

Property Details

- Open-plan kitchen, dining and living room
- Reception room
- Principal bedroom suite
- Additional bedroom
- Additional bathroom
- Roof terrace
- Off-street parking
- Royal Borough of Kensington & Chelsea

Approx. 1,219 sq ft / 113 sq m
 EPC - C
 Council tax - G
 Annual service charge - £3,000
 Share of freehold - circa 972 years



Location

The quietude of Golden Cross Mews belies in its fantastic proximity to Notting Hill's most vibrant street, Portobello Road. Commence mornings at Farm Girl before an invigorating class at SoulCycle. Venture to Westbourne Grove to pick up organic produce and explore the range of boutique shopping. Evenings are best spent at the Electric Cinema, Laylow or local favourite The Pelican, just around the corner from the mews.

Ladbroke Grove - 6 mins (Circle, Hammersmith & City)

Specialising in London
and Ibiza's design-led homes

Let's talk
020 7221 7817
sales@domusnova.com
domusnova.com

The particulars above are a guide, not an offer or contract. Descriptions, photographs and plans are not statements or representations of fact. Measurements are approximate and not to scale. Prospective purchasers must verify the accuracy of the information within the particulars. Domus Nova does not give any representations or warranties, nor represent the Seller legally. Domus Nova has no liability, for any costs, losses or expenses incurred by the Seller or a prospective buyer relating to the sales and buying transaction.

Our Sales Disclaimer, trading names and privacy policy on how your data is processed and used is found in full on our website in our [Privacy Statement](#).

© Domus Nova 2023. All rights reserved.