

DOMUS NOVA

Golborne Road

North Kensington W10

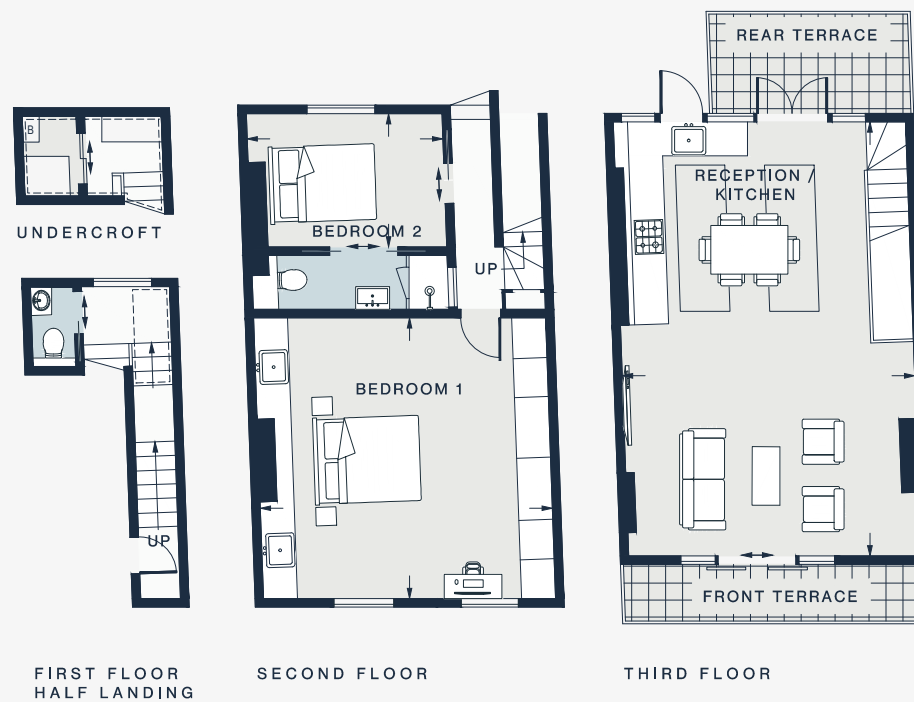
APPROXIMATE GROSS INTERNAL AREA

1031 sq ft / 95.8 sq m

020 7221 7817

domusnova.com

LONDON | IBIZA



KITCHEN / RECEPTION
25'1 x 17'0 (7.6m x 5.1m)

BEDROOM 1
16'11 x 16'3 (5.1m x 4.9m)

BEDROOM 2
11'4 x 7'9 (3.4m x 2.3m)

Floor plans are for illustrative purposes only and not to scale. Compliant with RICS code of measuring practice. Furniture layouts are indicative only. This property may be furnished, part-furnished or unfurnished. Please refer to your agent for details.