

DOMUS NOVA

Golborne Road

North Kensington W10

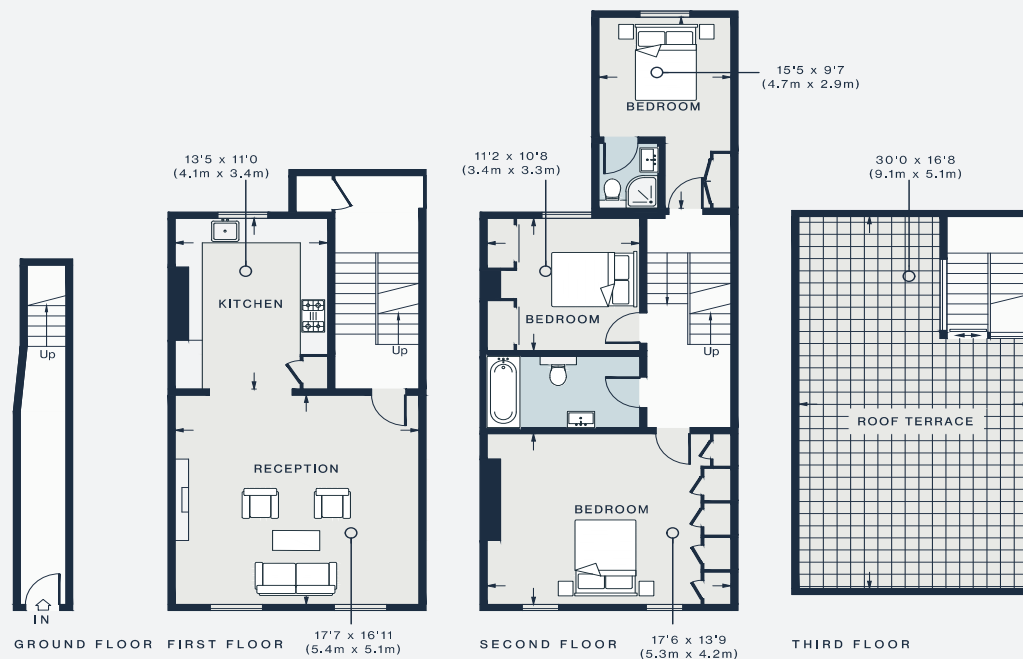
APPROXIMATE GROSS INTERNAL AREA

1,422 sq ft / 132.1 sq m

020 7727 1717

domusnova.com

LONDON | IBIZA



Floor plans are for illustrative purposes only and not to scale. Compliant with RICS code of measuring practice. Furniture layouts are indicative only. This property may be furnished, part-furnished or unfurnished. Please refer to your agent for details.