

DOMUS NOVA

Godolphin Road

Shepherd's Bush W12

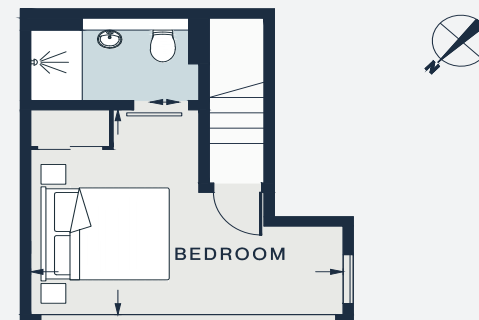
APPROXIMATE GROSS INTERNAL AREA

883 sq ft / 82 sq m

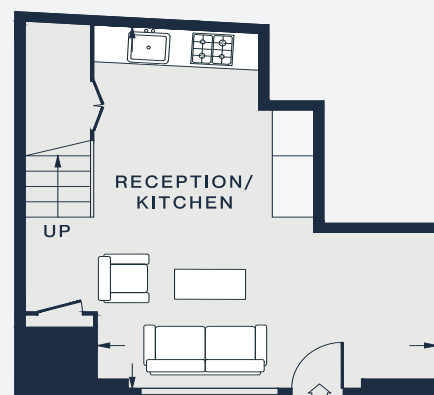
020 7727 1717

domusnova.com

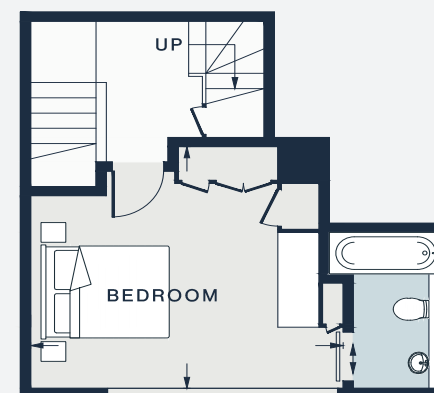
LONDON | IBIZA



SECOND FLOOR



GROUND FLOOR



FIRST FLOOR

RECEPTION / KITCHEN
19'5 x 16'2 (5.9m x 4.9m)

BEDROOM
14'10 x 12'9 (4.52m x 3.89m)

BEDROOM
14'10 x 11'0 (4.5m x 3.3m)

Approx. Gross Internal Area = 883 sq ft / 82.0 sq m

Floor plans are for illustrative purposes only and not to scale. Compliant with RICS code of measuring practice.