

DOMUS NOVA



Gloucester Walk W8
£1,299,500



A refined one-bedroom lateral apartment to match its sophisticated Kensington postcode. There's a sense of historic grandeur to Kensington's immaculate streets, lined with towering red-brick townhouses. Along Gloucester Walk, this one-bedroom apartment is all hushed elegance modern living in mind.

A smart entranceway is laid with parquet wood floors that flow into a spacious reception room. Heritage details — large bay windows, neat corning and an ornate fireplace surround — are paired with contemporary furnishings and a gilded sculptural chandelier. An intimate dining table is positioned by the window. Beyond, a verdant backdrop is provided by a communal garden to which the property has access. Next door, the kitchen inspires with wraparound marble worktops and golden detailing.









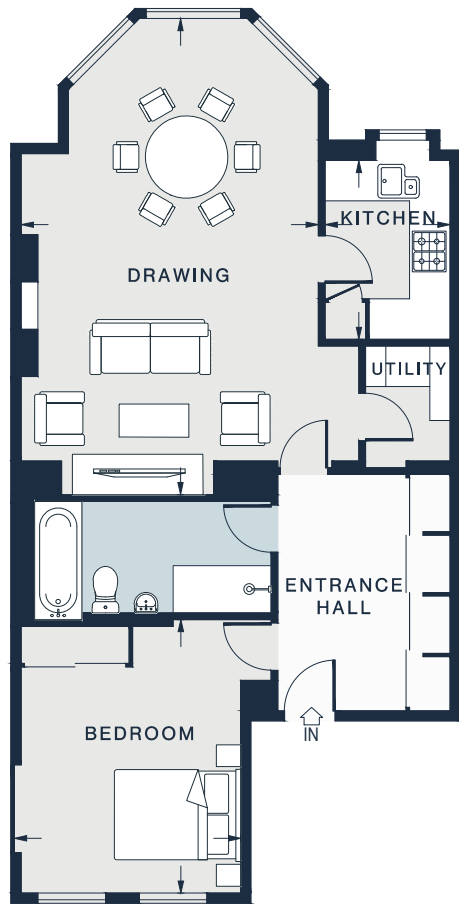
A sense of calm is drawn in the principal bedroom, with tall pale walls softly lit through double sash windows. Completing the property is a stylish bathroom, featuring an oversized rainfall shower and bathtub backdropped by smooth tiling.











DRAWING ROOM
23'2 x 14'5 (7.6m x 4.4m)

BEDROOM
13'3 x 11'0 (4.0m x 3.3m)

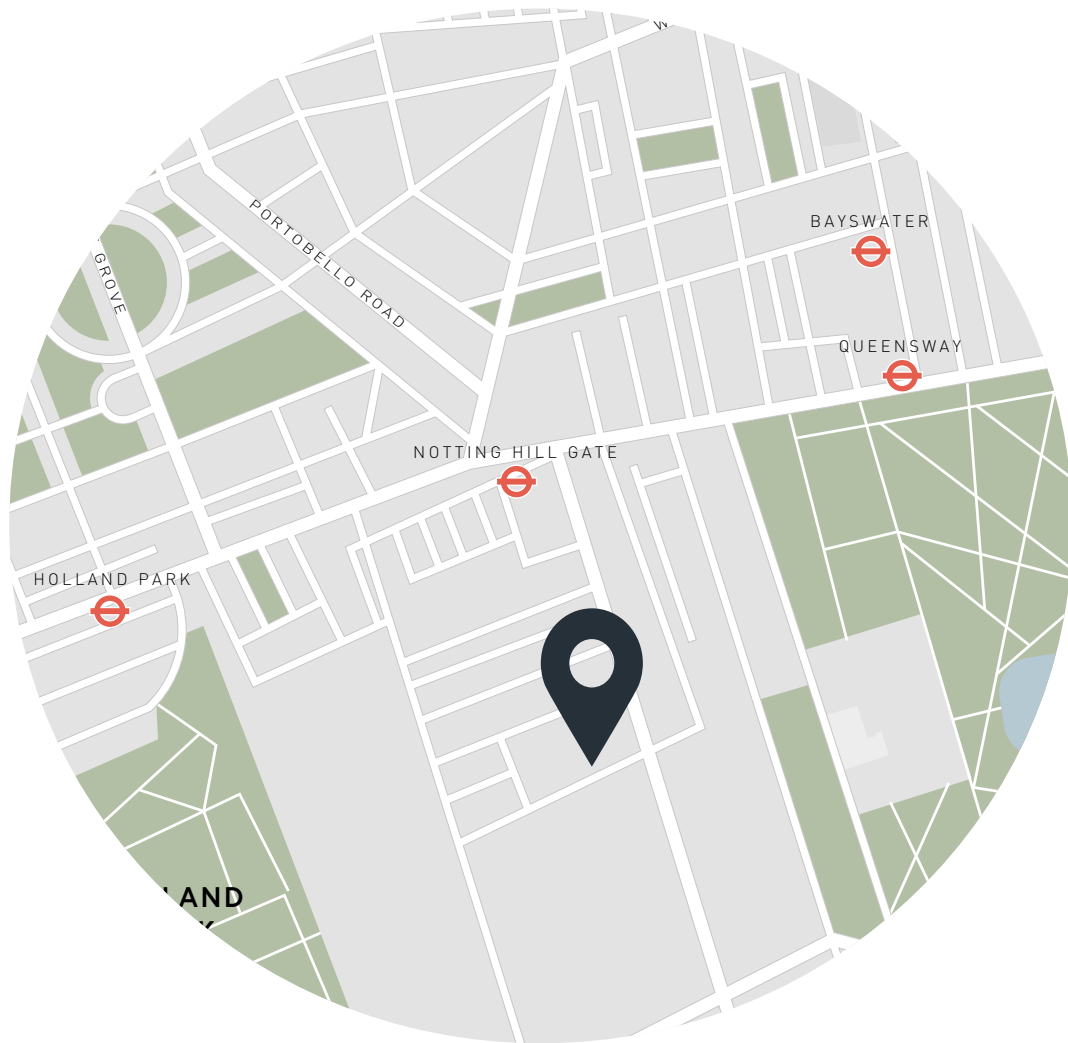
KITCHEN
8'8 x 6'1 (2.6m x 1.8m)

Approx. Gross Internal Area = 723 sq ft / 67.1 sq m

Property Details

- Open-plan reception room
- Contemporary kitchen
- Principal bedroom
- One bathroom
- Utility room
- Communal garden access
- Royal Borough of Kensington & Chelsea

- Approx. 723 sq ft / 67.1sq m
- EPC - C
- Council tax - E
- Share of freehold - Circa 998 years
- Annual service charge - £1,400



Location

A neighbourhood steeped in history and rich in culture, Gloucester Walk is on the doorstep to some of west London's most dynamic streets. Equal in distance from Kensington Gardens and Holland Park, calming green spaces are in abundance. For food and shopping, the lively High Street Kensington is a short walk away. Or venture north into Notting Hill for vintage treasures along Portobello Road. Spend an evening at Kitchen W8 for a Michelin-starred dining experience or the famed Churchill Arms for a cosy gastro-pub menu.

High Street Kensington - 8 mins (Circle, District)

Specialising in London
and Ibiza's design-led homes

Let's talk
020 7221 7817
sales@domusnova.com
domusnova.com

The particulars above are a guide, not an offer or contract. Descriptions, photographs and plans are not statements or representations of fact. Measurements are approximate and not to scale. Prospective purchasers must verify the accuracy of the information within the particulars. Domus Nova does not give any representations or warranties, nor represent the Seller legally. Domus Nova has no liability, for any costs, losses or expenses incurred by the Seller or a prospective buyer relating to the sales and buying transaction.

Our Sales Disclaimer, trading names and privacy policy on how your data is processed and used is found in full on our website in our [Privacy Statement](#).

© Domus Nova 2023. All rights reserved.