

DOMUS NOVA



Gloucester Mews West W2

£3,250,000

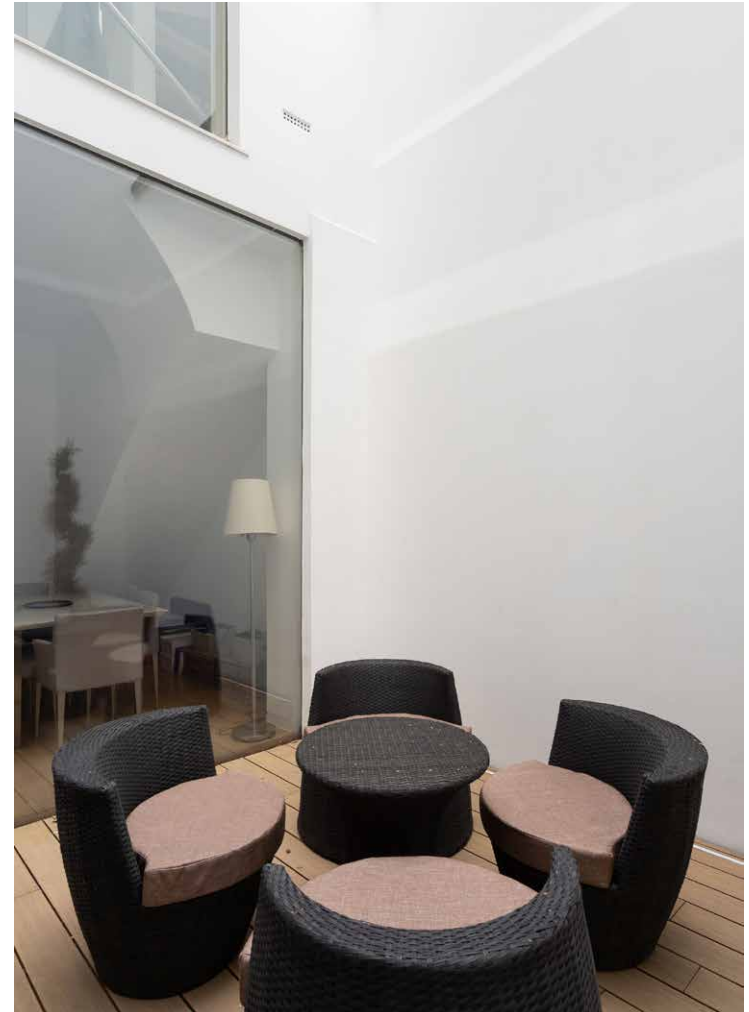


Understated style arranged across four floors, this five-bedroom home for sale seamlessly transports you from the hustle and bustle of the capital city.

Minimalist charm and muted tones lend a sense of serenity to this five-bedroom mews home, just minutes from Hyde Park. Spread across four floors, an impressive footprint awaits beyond its picturesque exterior.

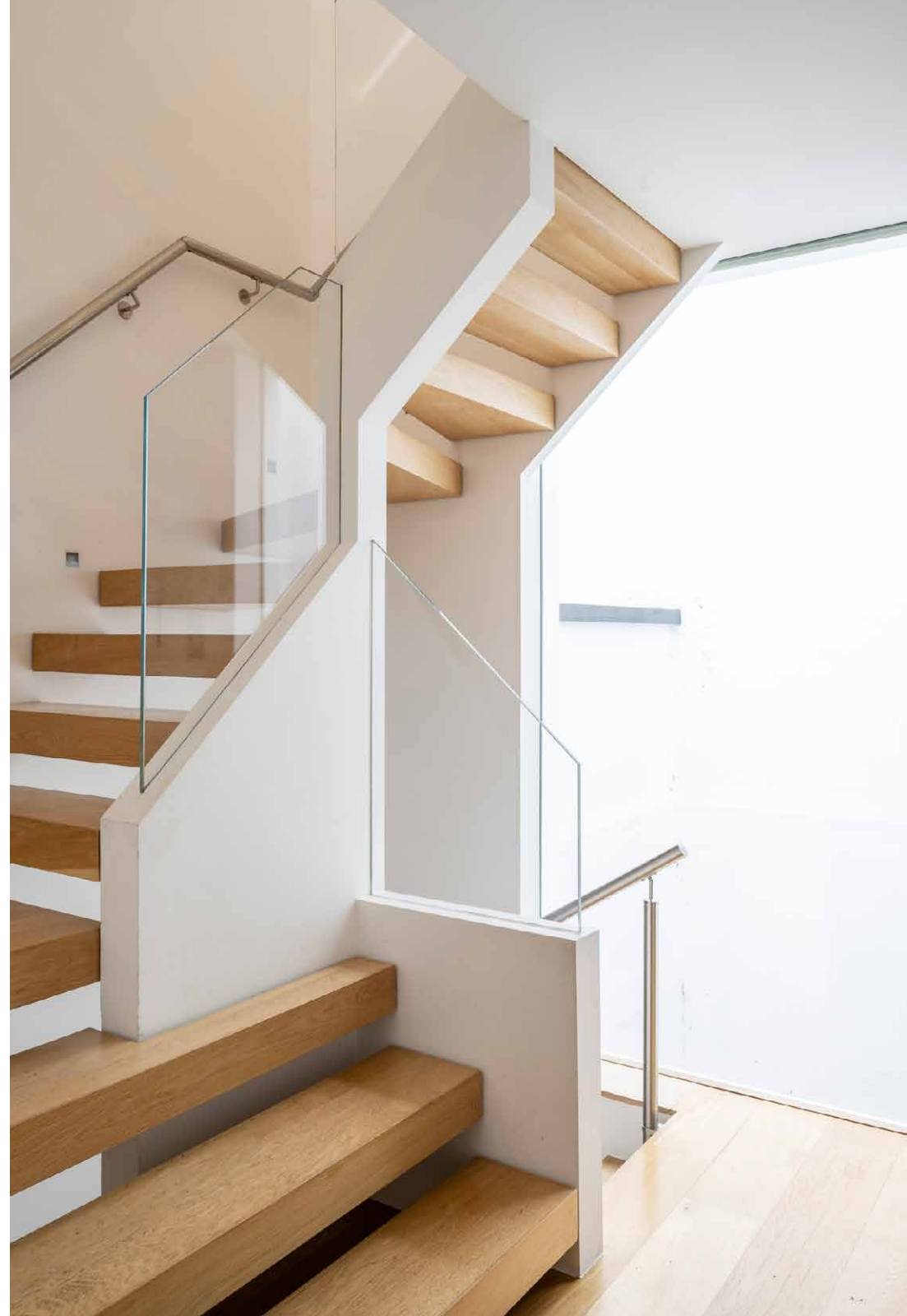
From the entrance, stairs lead down to the open-plan living room, infused with light through two sprawling floor-to-ceiling glass panels. Crafted with a Scandi-style sensibility, natural light and soothing tones take priority here. The kitchen's glossy surfaces and integrated stove are at once fuss-free and stylish, complete with a lavish island to establish a subtle separation with living spaces. Blonde wood flooring sweeps through spots to lounge or dine, while French doors open out to a south-facing courtyard.







Set at the top of the home, the principal bedroom suite enjoys an effortless air of privacy. Lofty wardrobes make for a clutter-free space, while neutral hues exude sophistication. Wrapped in tall stone tiles, the en-suite bathroom is crisp and clean, with a free-standing bath and walk-in shower. A skylight filters reams of light down the open staircase to three further bedrooms, found on the ground and first floors. Pared-back design and subtle textures provide peaceful environments to rest or retreat to, each served by considered bathrooms. One further bedroom sits on the ground floor, a versatile space that could alternatively be utilised as a study.







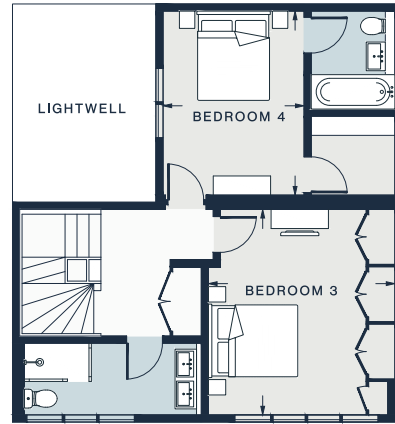




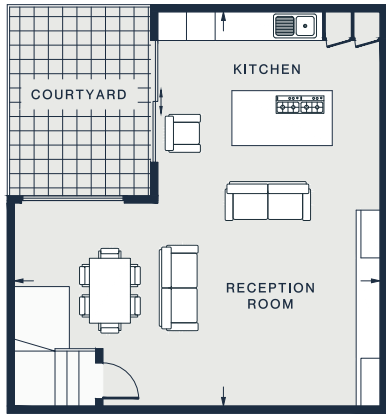




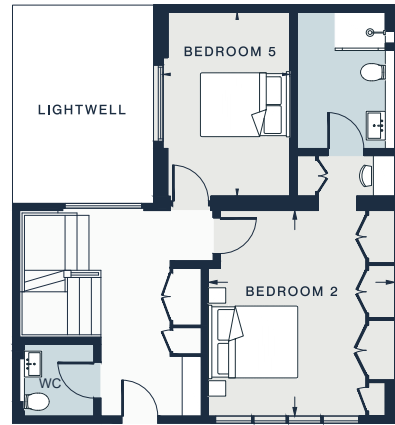
SECOND FLOOR



FIRST FLOOR



LOWER GROUND FLOOR



GROUND FLOOR

RECEPTION ROOM / KITCHEN

27'1 x 25'1 (8.2m x 7.6m)



BEDROOM 1

15'11 x 15'11 (4.8m x 4.8m)



BEDROOM 2

14'1 x 12'10 (4.3m x 3.9m)



BEDROOM 3

14'1 x 12'10 (4.3m x 3.9m)



BEDROOM 4

12'8 x 9'8 (3.8m x 2.9m)



BEDROOM 5

12'6 x 8'8 (3.8m x 2.65m)



Approx. Gross Internal Area = 2,152 sq ft / 199.9 sq m

Floor plans are for illustrative purposes only and not to scale. Compliant with RICS code of measuring practice.

Property Details

- Open-plan kitchen, dining and reception room
- Principal bedroom suite
- Two bedroom suites
- Two further bedrooms
- Shower room
- Cloakroom
- Private courtyard
- City of Westminster

Approx. 2,152 sq ft / 199.9 sq m.

EPC - B

Council tax - G

Freehold



Location

A bolt hole to the vibrant capital, this cobbled street of mews homes is a peaceful setting just a stone's throw from Paddington station. Hyde Park is just a 10-minute walk away, where you can stroll through the manicured lawns to Kensington Palace or take a dip in the Serpentine Lido. Wander west towards the cafes and boutiques of Westbourne Grove, stopping at Beam or Sunday in Brooklyn for an indulgent brunch. If you need to head into the city centre, Paddington Station makes getting around effortless.

Specialising in London
and Ibiza's design-led homes

Let's talk
020 7221 7817
sales@domusnova.com
domusnova.com

The particulars above are a guide, not an offer or contract. Descriptions, photographs and plans are not statements or representations of fact. Measurements are approximate and not to scale. Prospective purchasers must verify the accuracy of the information within the particulars. Domus Nova does not give any representations or warranties, nor represent the Seller legally. Domus Nova has no liability, for any costs, losses or expenses incurred by the Seller or a prospective buyer relating to the sales and buying transaction.

Our Sales Disclaimer, trading names and privacy policy on how your data is processed and used is found in full on our website in our [Privacy Statement](#).

© Domus Nova 2023. All rights reserved.