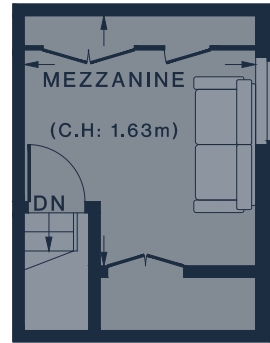


FIRST FLOOR



MEZZANINE

RECEPTION ROOM  
24'1 x 16'3 (7.3m x 4.9m)

KITCHEN  
10'1 x 8'1 (3.0m x 2.4m)

BEDROOM  
14'3 x 13'8 (4.3m x 4.1m)

MEZZANINE  
10'10 x 10'1 (3.3m x 3.0m)

Approx. Gross Internal Area = 919 sq ft / 85.38 sq m

Floor plans are for illustrative purposes only and not to scale. Compliant with RICS code of measuring practice.  
Prepared for Domus Nova. Copyright © All Rights Reserved.