

DOMUS NOVA



Garway Road W2 – £1,750,000

In partnership with **BARNES**
INTERNATIONAL REALTY



Creative design sets the tone at Garway Road.

Arranged across two light-filled floors, this duplex balances calm, neutral backdrops with confident bursts of colour. Tall sash windows flood the interiors with light, while the boutiques, restaurants and cafés of nearby Westbourne Grove sit just around the corner.

Stairs ascend to the first floor, where living spaces unfold in an easy, sociable sequence. The reception room sets a welcoming tone: beige walls and warm wood floors form a soft canvas for furnishings, while deep burgundy cabinetry adds depth and space for essentials. From here, the layout flows through to the dining room. Framed by tall windows and dressed in soft pink tones, it's a cheerful space to congregate morning or night. Just beyond, the kitchen sits neatly tucked into its own nook. Cabinetry is finished in a gentle sage-teal shade, elevated with brass handles from Touch Ironmongery.











Upstairs, the bedrooms adopt a more restful palette. The principal suite is defined by calm neutral tones and bespoke integrated storage, alongside an en suite bathroom with a bathtub and marble detailing. A second bedroom echoes the same understated approach, served by a neighbouring shower room.

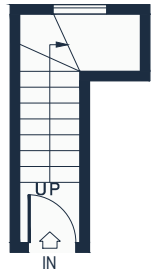




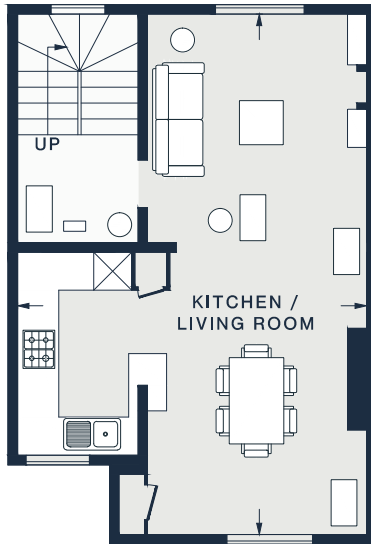




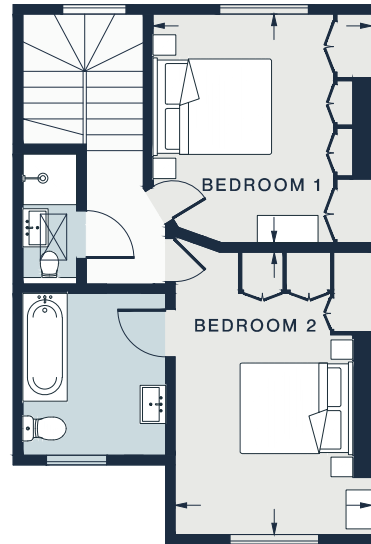




GROUND FLOOR



FIRST FLOOR



SECOND FLOOR

Property Details

- Bespoke interior design
- Contemporary kitchen and dining room
- Reception room
- Principal bedroom suite with integrated storage
- Guest bedroom with built-in wardrobes
- Shower room
- City of Westminster

Approx. 966 sq ft / 89.8 sq m

EPC=D

Tenure: Share of Freehold

Lease Length: circa 159 years

Annual Service Charge: Approx. TBC

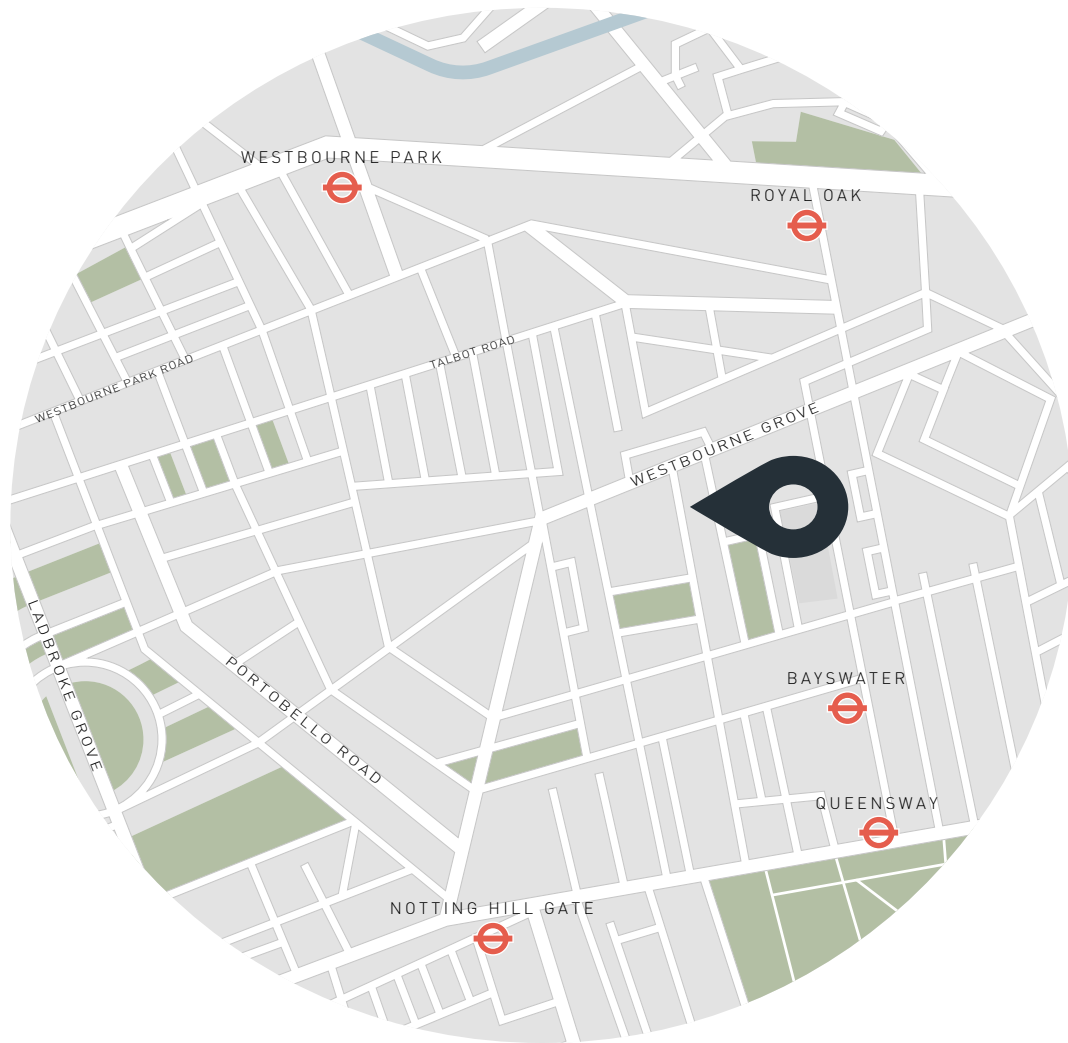
Council Tax Band: F

KITCHEN /
LIVING ROOM
26'10 x 18'0 (8.1m x 5.4m)

BEDROOM 1
11'10 x 11'5 (3.6m x 3.4m)

BEDROOM 2
14'9 x 10'2 (4.5m x 3.1m)

Approx. Gross Internal Area = 966 sq ft / 89.8 sq m



Location

Just around the corner from one of Notting Hill's most vibrant and fashionable streets, Garway Road gives you easy access to Westbourne Grove's wealth of boutiques, eateries and amenities. Local produce is best from Ben's, Planet Organic or Daylesford Organic. Favoured brunch spots include Beam, Granger & Co. amongst others. For invigorating workouts, head to 1Rebel or Psycle. It's a short walk to the manicured lawns of Hyde Park – the perfect spot for a summertime picnic.

Bayswater - 7 mins (Circle, District)

Queensway - 9 mins (Central)



Who ——— we are

Forward-thinkers in property, design and culture, we're an estate agency that hits refresh.

Domus Nova was born out of a desire to do things differently; to break the traditional agency model and focus on design-led homes in London and Ibiza, all while delivering the highest levels of personal service.

Our story starts in the nineties when we founded Notting Hill's first boutique agency – and we continue to open the doors to the most remarkable spaces, revealing them to our like-minded community.

We want to help you live better – and believe considered design can do that. That's why we remain committed to building on our legacy, in collaboration with BARNES International, an established agency with a market-leading presence in 22 countries.

Uniting our local insight and curated portfolio with BARNES International's expansive reach, we can facilitate the best opportunities in not only London and Ibiza, but also across Europe, the US and further afield – whether that's a château in the South of France, a penthouse in New York, or a chalet in the Swiss Alps.



DOMUS NOVA

Specialising in London
and Ibiza's design-led homes

Let's talk

020 7221 7817

sales@domusnova.com

The particulars above are a guide, not an offer or contract. Descriptions, photographs and plans are not statements or representations of fact. Measurements are approximate and not to scale. Prospective purchasers must verify the accuracy of the information within the particulars. Domus Nova does not give any representations or warranties; nor represent the Seller legally. Domus Nova has no liability, for any costs, losses or expenses incurred by the Seller or a prospective buyer relating to the sales and buying transaction.

Our Sales Disclaimer, trading names and privacy policy on how your data is processed and used is found in full on our website in our [Privacy Statement](#).

© 2026 Domus Nova in partnership with BARNES International. All rights reserved.

In partnership with
BARNES
INTERNATIONAL REALTY