

DOMUS NOVA



Palace Gardens Terrace W8
£1,550,000



Period proportions, wide sash windows and a lofty vantage point heighten the sense of space throughout this home, found on one of Kensington's most sought-after cherry tree-lined streets. There's an understated elegance to the set-up, designed with modern living in mind. A neutral colour palette of biscuity beige and grey tones is as soothing as it is practical.

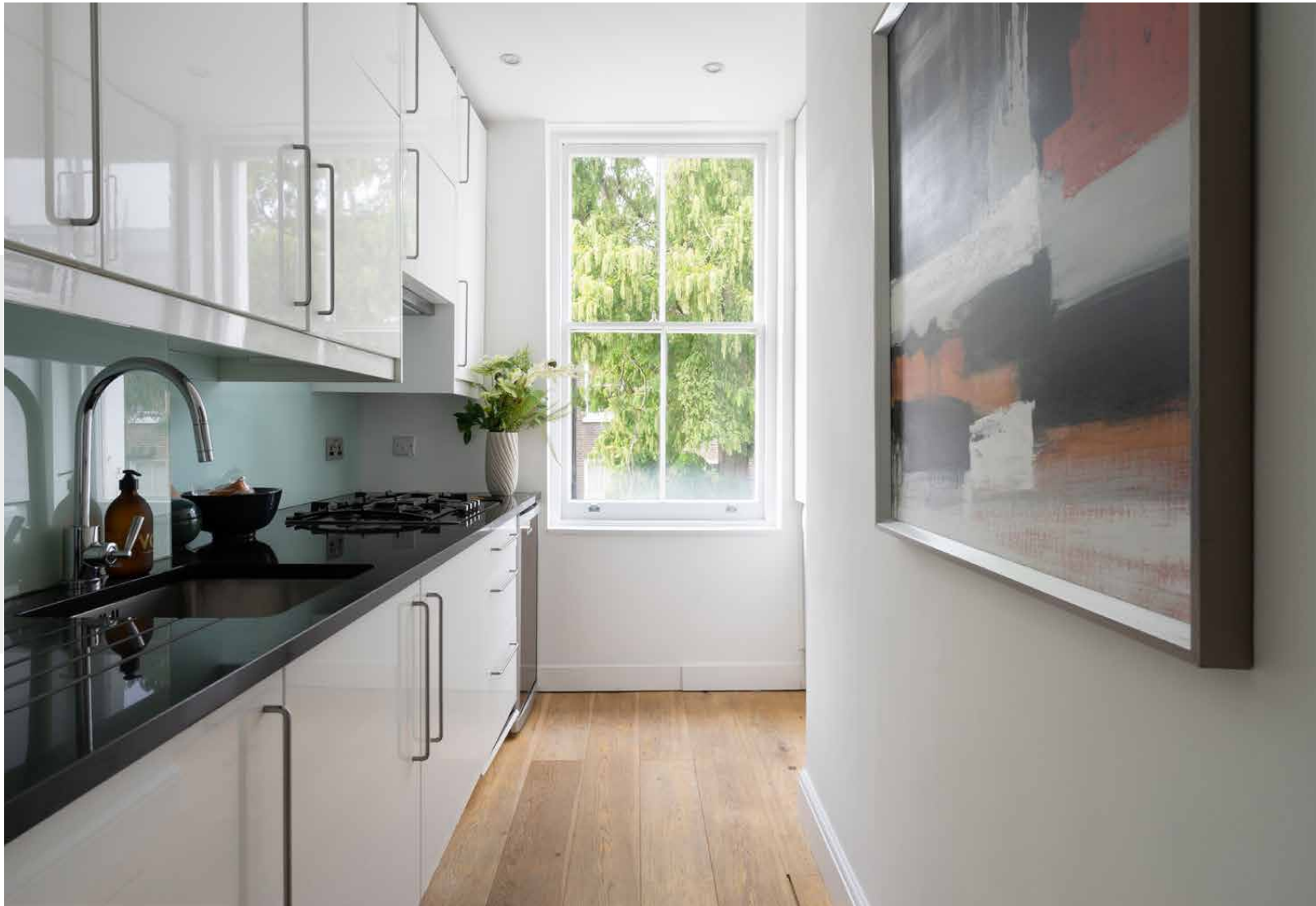
Up on the second floor you'll find the reception room – another lesson in light and space. Generous sash windows frame a multipurpose area designed with relaxation and socialising in mind. Grandeur courtesy of high ceilings, elegant cornicing and a feature fireplace is balanced with cosy window-side reading spots and a plush carpet. The sitting area flows seamlessly into a dining nook, ideal for entertaining, while neutral tones provide a backdrop for vibrant artwork or sculptural furniture.

Things take a monochrome turn in the sleek galley kitchen next door – all glossy countertops and overhead cabinetry that makes the most of the generous ceiling height – with blonde wooden floors amplifying the airy feel.

Off the entrance hall you'll find the first of two bedrooms, currently being used as a home office. The off-white shade on the walls sets a calming tone and considered design translates to discreet, integrated cupboards that offer ample storage. Light washes through the large window, where a mature tree sways just outside, creating a curtain of privacy. The main bathroom next door comes complete with a spacious standalone shower, mirrored cabinets and a rich cream and mahogany colour scheme.



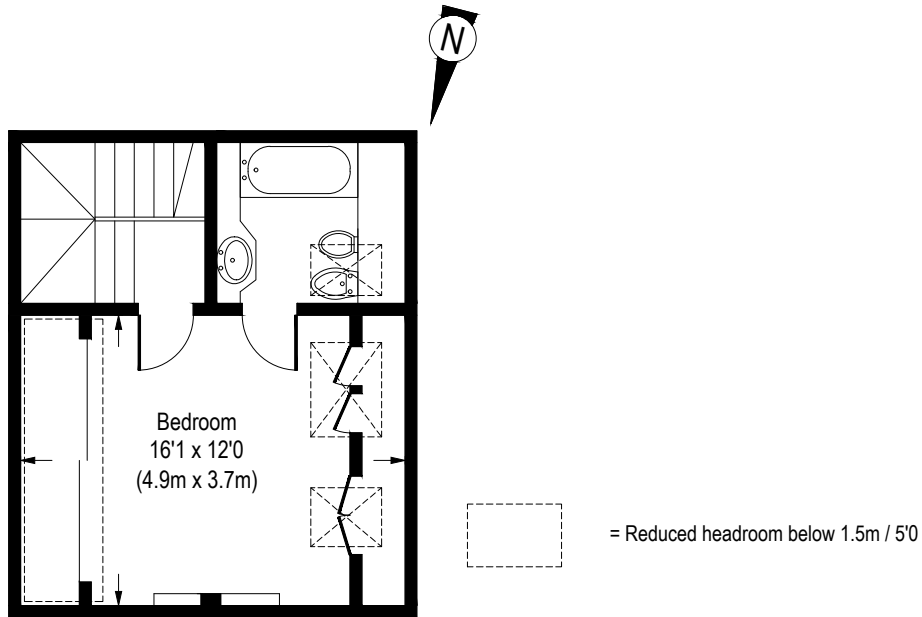




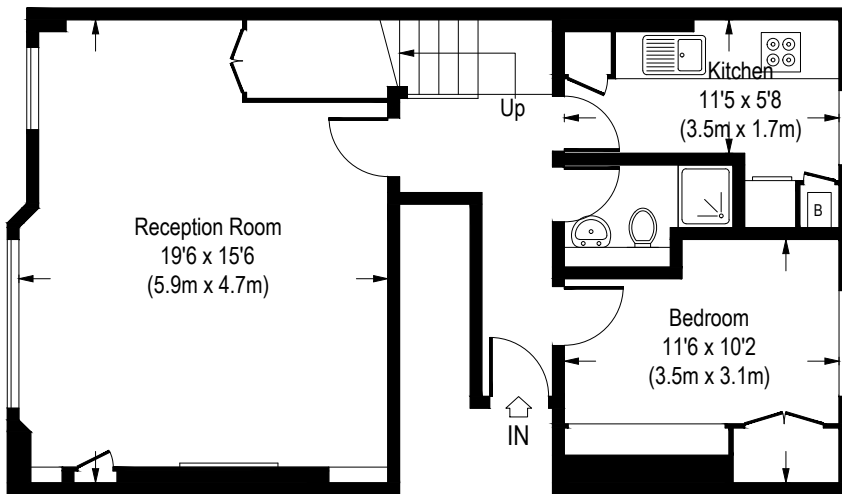


Up on the third floor, the master is tucked away in the eaves and cleverly configured, with integrated cabinetry that makes the most of the recesses to become a feature of the room itself. Two huge skylights flood the space in light. The subway-tiled ensuite, with bath, is similarly bright and serene.





Third Floor



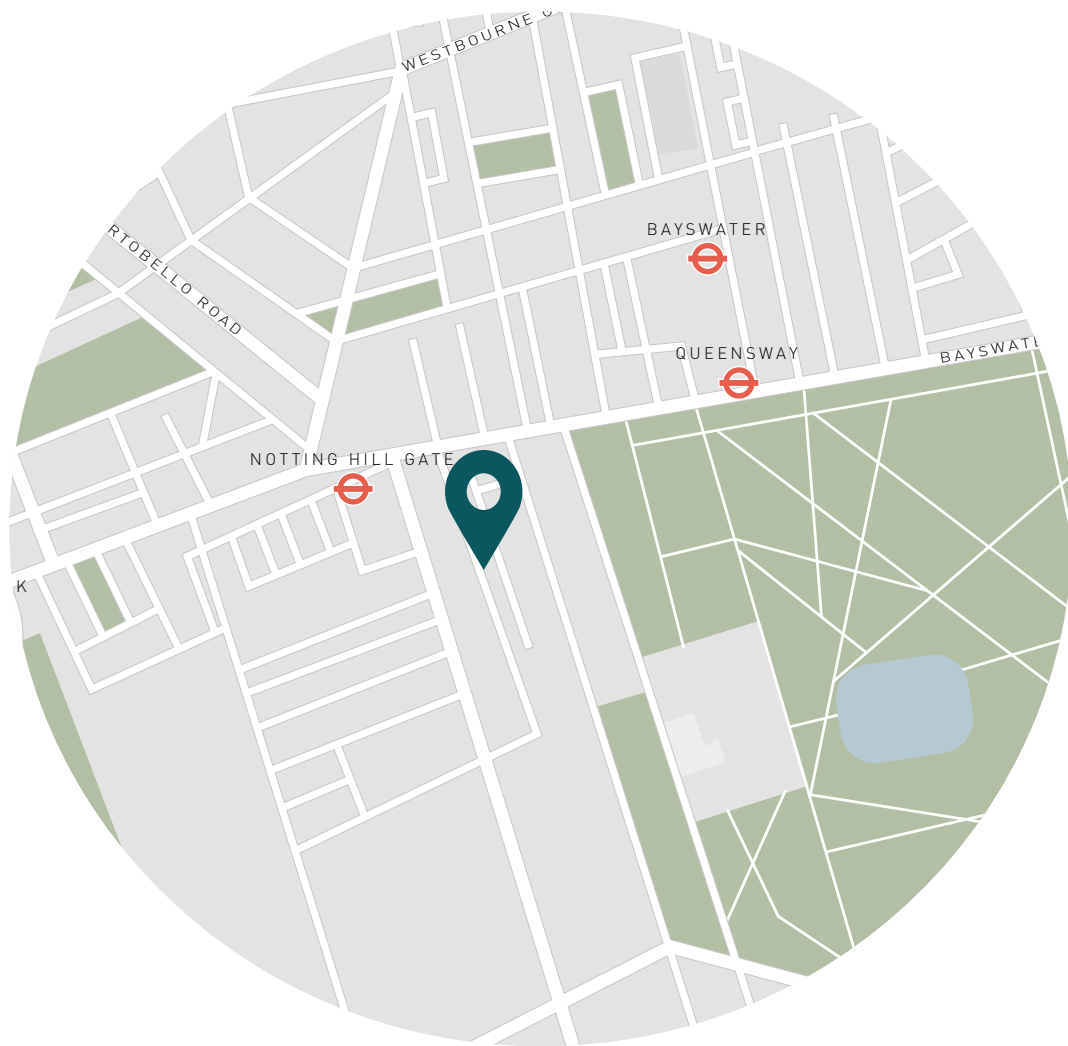
Second Floor

Approximate Gross Internal Area
874 Sq.Ft. / 81 Sq.M.

Floor Plans are for illustrative purposes only and not to scale.
Compliant with RICS code of measuring practice.

Property Details

Bright and airy reception room with fireplace
Modern kitchen
Light-filled master with sleek en-suite
One further bedroom ideal as a home study
Sand-toned shower room
Near Kensington Gardens
Royal Borough of Kensington & Chelsea
Approx. 874 sq ft / 81 sq m EPC=C



Location

A short stroll from Kensington Gardens and Holland Park, Palace Gardens Terrace offers a peaceful retreat from the thrum of city life. Suitably refreshed, stock the shelves with Bordeaux from Huntsworth Wine or drink in the floral exterior at the Churchill Arms before browsing the treasure trove of antiques shops that throng Kensington Church Street to source a one-off gem for your new home. With Notting Hill and Queensway tube stations close by, the rest of London is within easy reach.

Notting Hill Gate (4 mins)

High Street Kensington (7 mins)

Specialising in London
and Ibiza's design-led homes.

Let's talk
020 7221 7817
sales@domusnova.com
domusnova.com