

DOMUS NOVA



Kilburn Lane W10
£650 p/w - Long Let



Streamlined living in this two-bedroom apartment with two private terraces, set in the heart of vibrant Kensal Rise.

During the 2000s, The Old Dairy House was a hub for creatives, musicians and artists. Before that – in the mid-20th century – the building was home to independent dairy farmers, the Higgins Bros. Emulating Kensal Rise’s rich character and sense of community, POW Architects have reimagined this historic site for dynamic contemporary dwelling.

The immaculate brick façade is a precursor to the clean lines and attention to detail found within the home. Situated on the second floor, there’s minimalist elegance to this two-bedroom apartment. Enter an open-plan kitchen and reception room through a striking black stained oak door. A conversation of bright light and smooth finishes, every detail has been thoughtfully addressed. The kitchen vaunts Silestone worktops, a ceramic glass hob and Blum soft-closing cabinets. The spacious footprint offers balance to live, work and entertain, flooded with natural light through south-facing windows. From here, head out to one of two terraces – the ideal spot for morning coffees or evening sundowners.





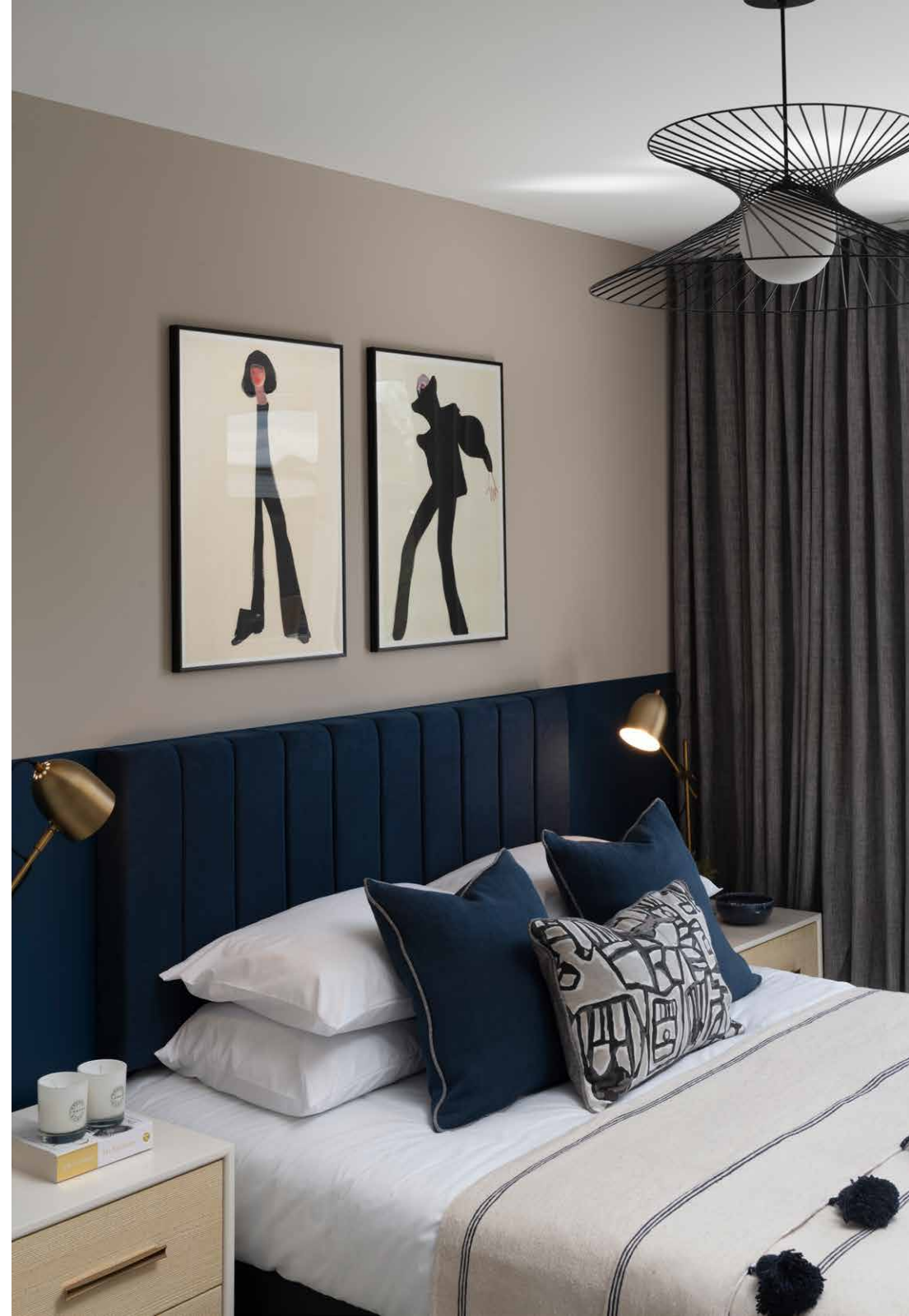




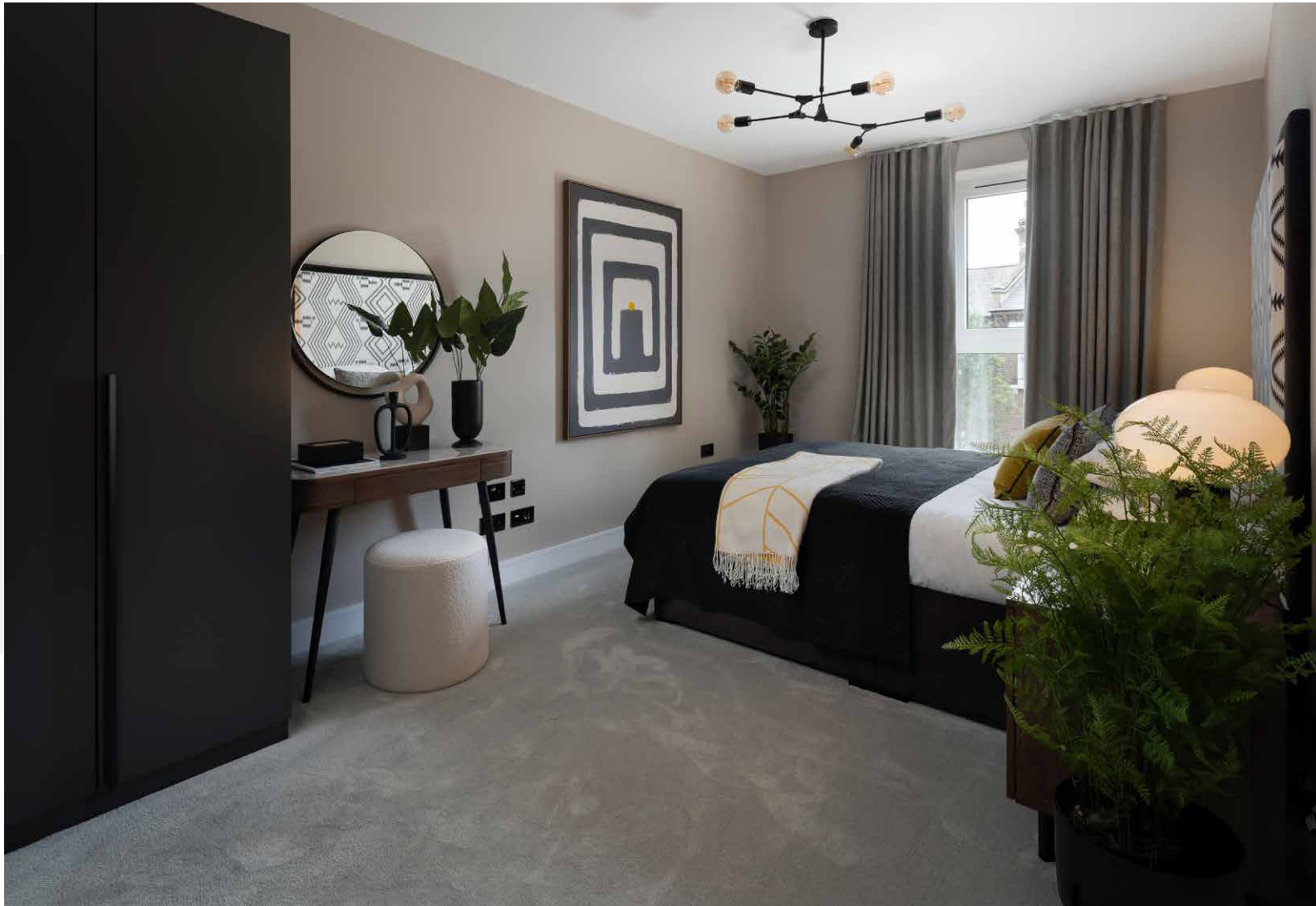




Enjoying direct access to the second terrace is the master bedroom. It's a sophisticated and bright space, with a neutral palette and soft carpets. There's plenty of storage to ensure a clutter-free environment. The en-suite bathroom offers spa-like luxury: soft matte tiles and Crosswater black fittings set a stylish scene for the illuminated bath. A second bedroom is ideal for guests, with versatility to be used as a peaceful home office – served by a family bathroom.







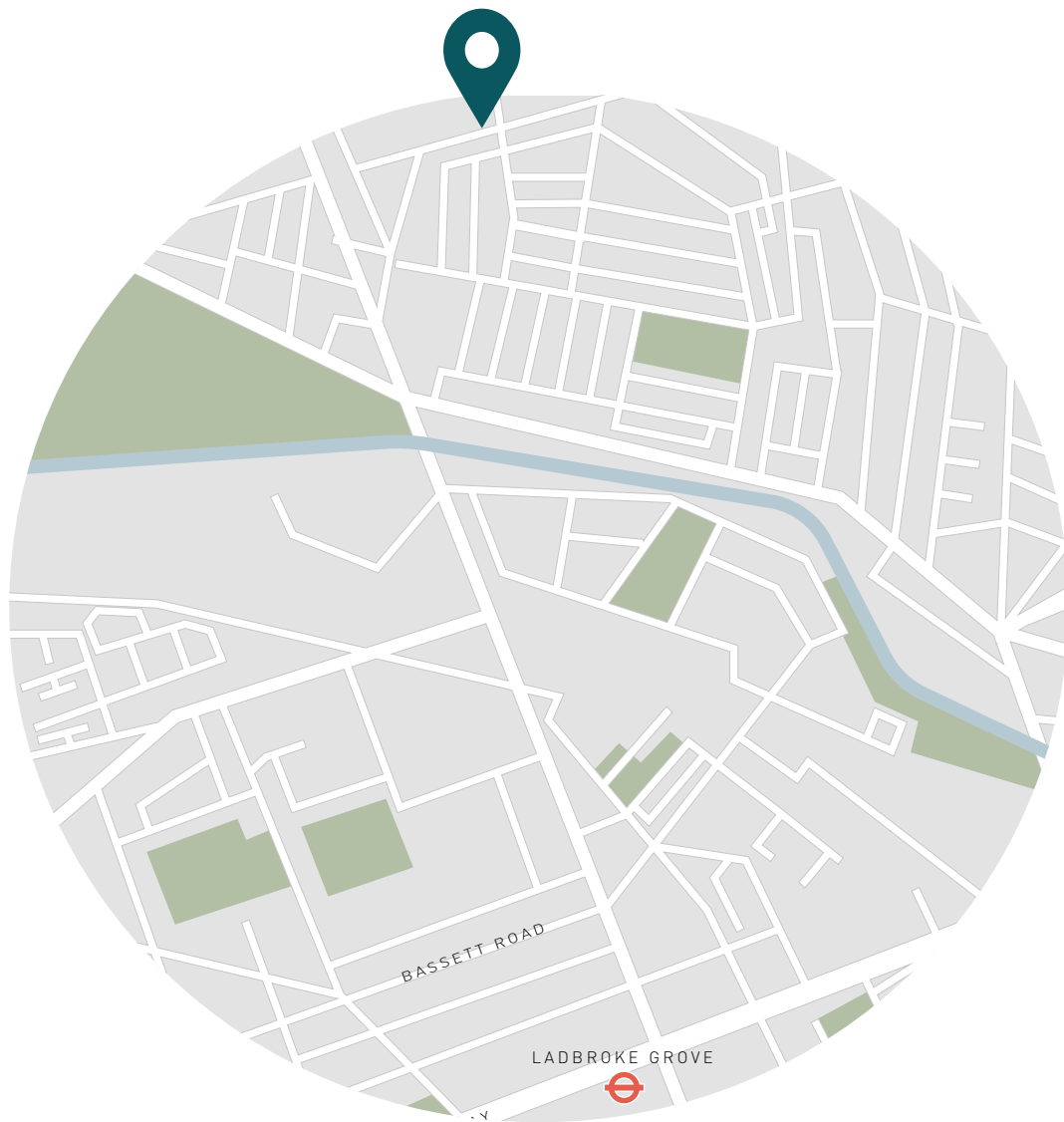




Property Details

- Open-plan kitchen and reception room
- Master bedroom with en-suite bathroom
- One further bedroom
- One further bathroom
- Two private terraces
- Private gated development
- Borough of Brent

Approx 70.4 sq. m / 757.8 sq. ft - EPC = B



Location

A hub for creatives, commuters and celebrities, Kensal Rise is a neighbourhood brimming with eclectic eateries and a keen sense of community. Coveted haunts include Carmel, Michiko Sushino and The Wolfpack. Queen's Park awaits long weekend walks, followed by a film at Lexi Cinema. Pick up a page-turner at Queen's Park Books, before browsing local produce at the farmer's market. With plenty of transport options on your doorstep, there's easy access to the rest of the capital.

Kensal Rise – circa. 8 mins (Overground)

Specialising in London
and Ibiza's design-led homes.

Let's talk

020 7727 1717

lettings@domusnova.com

domusnova.com