

DOMUS NOVA



Colville Road, W11
£795 p/w Long Let



Light-flooded lateral living. A top-floor, two-bedroom apartment in the beating heart of Notting Hill.

Outside, a stucco-fronted Victorian conversion. Inside, a hallmark of minimalist living. Ascend to the fourth floor and step inside an open-plan kitchen and reception room. Beams of light cascade through dual-aspect windows and skylights, illuminating the whitewashed walls and sweeping blonde floors. There's a voluminous feel to the space, thanks to wooden beams and a vaulted ceiling that accentuate the sense of height and openness. The kitchen is an uplifting space pictured for creative cooks; a red tiled splash back adds aesthetic flair to the pared-back palette. Its accompanying dining area is an inviting spot to host friends and family.

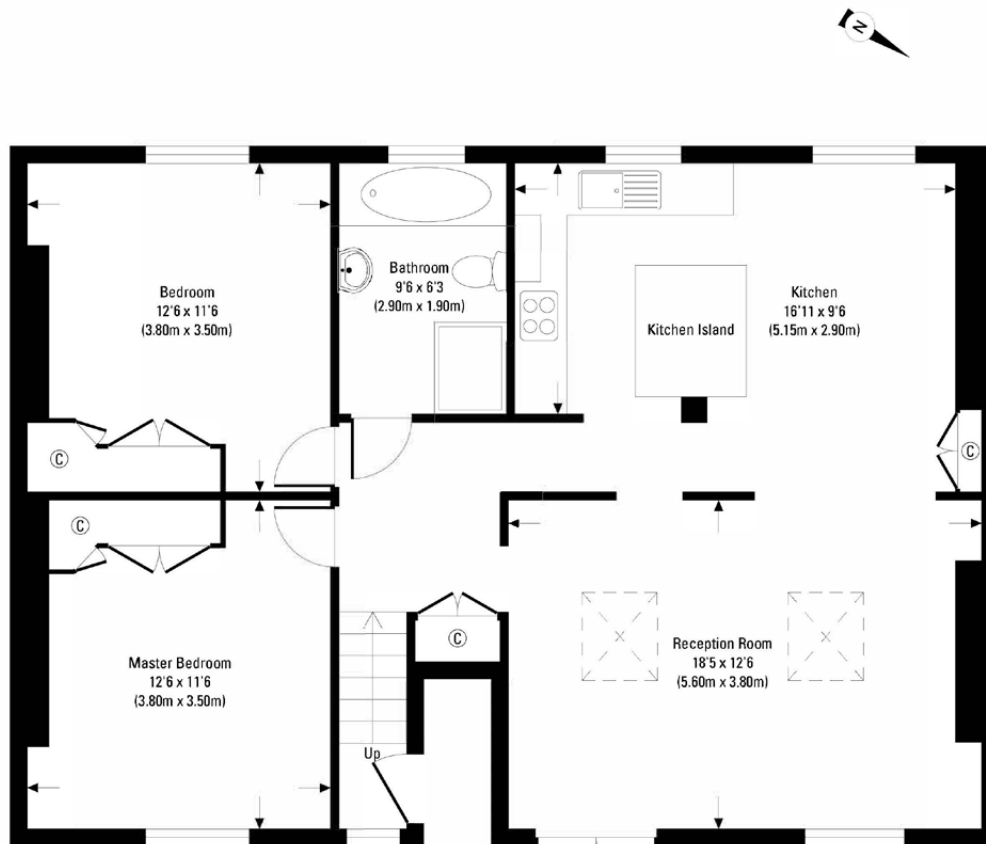




The master bedroom is a luminous space, presenting a dialogue between clean lines and bright light. A guest bedroom next door shares this tranquil character, with versatility to be used as an office space. A family bathroom serves both these rooms, wrapped in an immaculate trio of white, green and black tiles.







Fourth floor

Approx. Gross Internal Floor Area 864 Sq. Ft. / 80 Sq. M.
 Floor plans are for illustrative purposes only and not to scale.
 Compliant with RICS code of measuring practice.

Property Details

Open-plan kitchen and reception room
 Master bedroom
 One further bedroom
 Family bathroom
 Royal Borough of Kensington & Chelsea
 Approx. 864 sq ft / 80 sq m. EPC=C



Location

Framed by Westbourne Grove and Portobello Road, Colville Road has enviable proximity to the best offerings of its Notting Hill postcode. Pick up groceries from Daylesford Organic Farm Shop before heading to Bodyism for an invigorating workout. Weekend brunches at 202 or Granger & Co. When you need a breath of fresh air, Holland Park is a 15-minute walk away. Head to the Design Museum for a spot of culture, before an evening dining at Core by Clare Smyth. Home in five.

DOMUS NOVA

Specialising in London
and Ibiza's design-led homes.

Let's talk
020 7727 1717
lettings@domusnova.com
domusnova.com