

# DOMUS NOVA

Kensington Park Road

Notting Hill W11

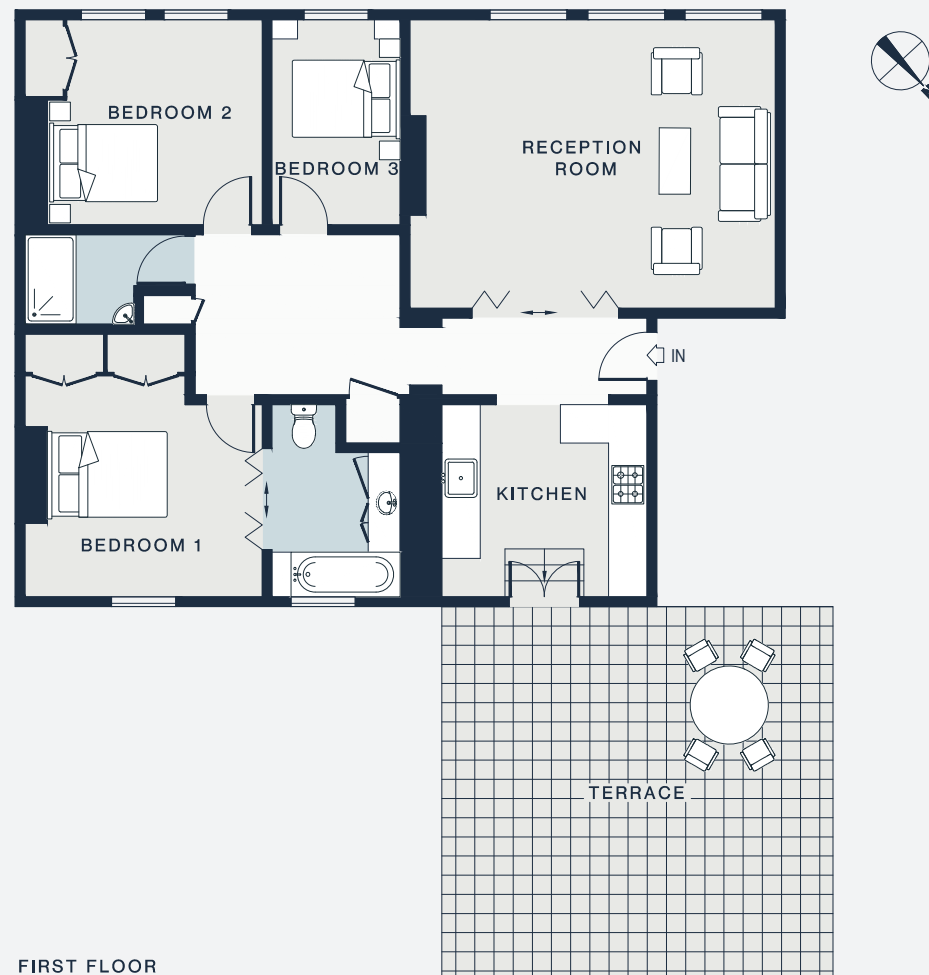
APPROXIMATE GROSS INTERNAL AREA

**1,014 sq ft / 94 sq m**

020 7727 1717

domusnova.com

LONDON | IBIZA



## FIRST FLOOR

### RECEPTION

18'8 x 14'10 (5.7m x 4.5m)

### KITCHEN

10'5 x 9'3 (3.2m x 2.8m)

### BEDROOM 1

13'6 x 12'3 (4.1m x 2.0m)

### BEDROOM 2

12'1 x 10'5 (3.7m x 3.2m)

### BEDROOM 3

10'5 x 6'7 (3.2m x 2.0m)

Floor plans are for illustrative purposes only and not to scale. Compliant with RICS code of measuring practice. Furniture layouts are indicative only. This property may be furnished, part-furnished or unfurnished. Please refer to your agent for details.