

DOMUS NOVA

De Vere Gardens

Kensington W8

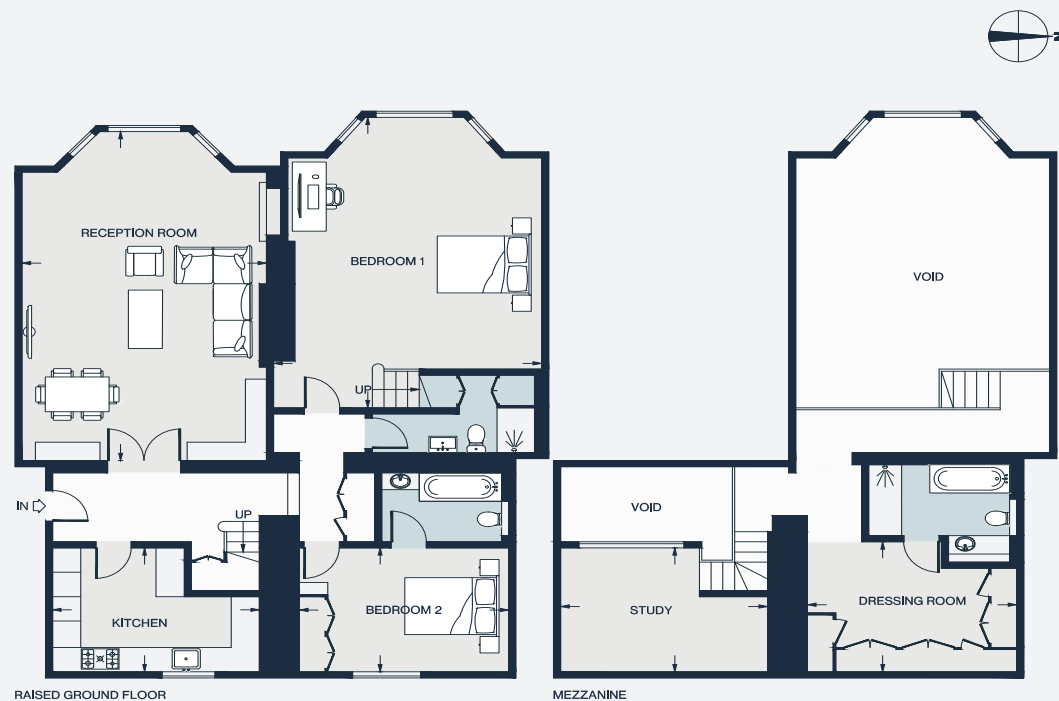
APPROXIMATE GROSS INTERNAL AREA

1,996 sq ft / 185.4 sq m

020 7727 1717

domusnova.com

LONDON | IBIZA



RECEPTION

26'6 x 17'1 (8.1m x 5.2m)

KITCHEN

14'6 x 10'0 (4.4m x 3.0m)

BEDROOM 1

23'5 x 18'8 (7.2m x 5.7m)

BEDROOM 2

14'5 x 10'0 (4.4m x 3.1m)

STUDY

14'4 x 10'0 (4.4m x 3.1m)

DRESSING ROOM

14'3 x 10'6 (4.3m x 3.2m)

Floor plans are for illustrative purposes only and not to scale. Compliant with RICS code of measuring practice. Furniture layouts are indicative only. This property may be furnished, part-furnished or unfurnished. Please refer to your agent for details.