

DOMUS NOVA

Crescent Mansions

Notting Hill W11

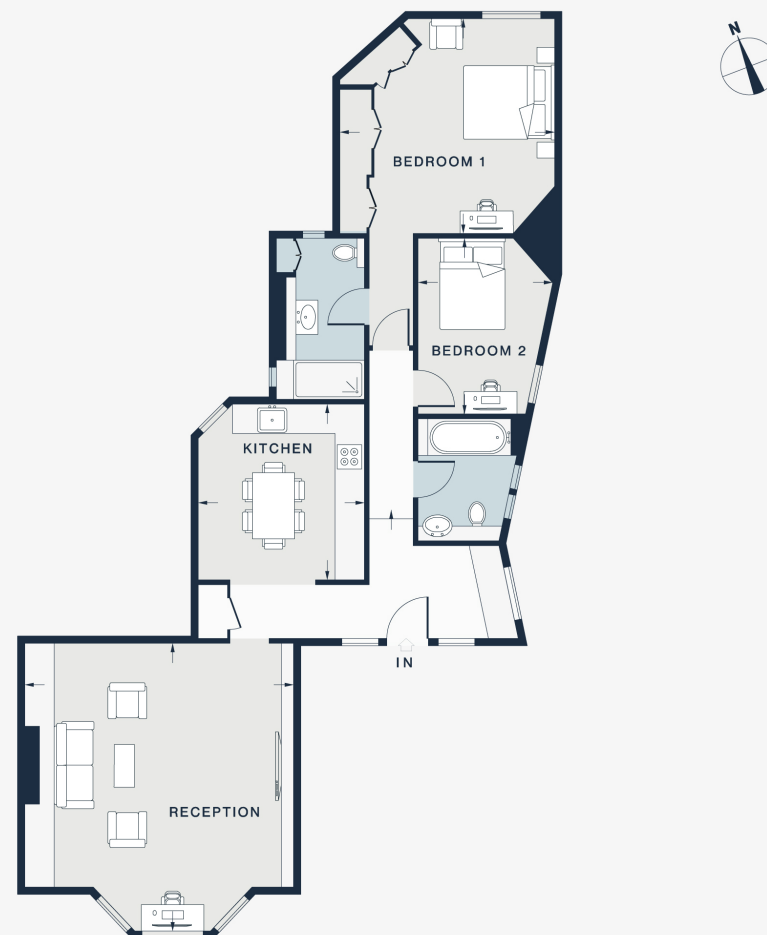
APPROXIMATE GROSS INTERNAL AREA

1,068 sq ft / 99.2 sq m

020 7727 1717

domusnova.com

LONDON | IBIZA



RECEPTION
19'6 x 18'1 (5.9m x 5.5m)

KITCHEN
11'10 x 11'0 (3.6m x 3.4m)

BEDROOM 1
14'6 x 14'5 (4.4m x 4.4m)

BEDROOM 2
11'9 x 9'1 (3.6m x 2.8m)

Floor plans are for illustrative purposes only and not to scale. Compliant with RICS code of measuring practice. Furniture layouts are indicative only. This property may be furnished, part-furnished or unfurnished. Please refer to your agent for details.